

8 7 6 5 4 3 2 1

NEXT USED ASSEMBLY  
N/A

NO REPRESENTATION OR WARRANTY, EXPRESSED OR IMPLIED, IS MADE AS TO THE ACCURACY, COMPLETENESS OR USEFULNESS OF THE INFORMATION OR STATEMENTS CONTAINED IN THESE DRAWINGS, OR THAT THE DISCLOSURE OF ANY INFORMATION, APPARATUS, METHOD OR PROCESS DISCLOSED IN THESE DRAWINGS MAY NOT INFRINGE PRIVATE RIGHTS OF OTHERS. NO LIABILITY IS ASSUMED WITH RESPECT TO THE USE OF, OR FOR DAMAGES RESULTING FROM THE USE OF, ANY INFORMATION, APPARATUS, METHOD OR PROCESS DISCLOSED IN THESE DRAWINGS. DRAWINGS MADE AVAILABLE FOR INFORMATION TO BIDDER ARE NOT TO BE USED FOR OTHER PURPOSES AND ARE TO BE RETURNED UPON REQUEST OF THE FORWARDING CONTRACTOR.

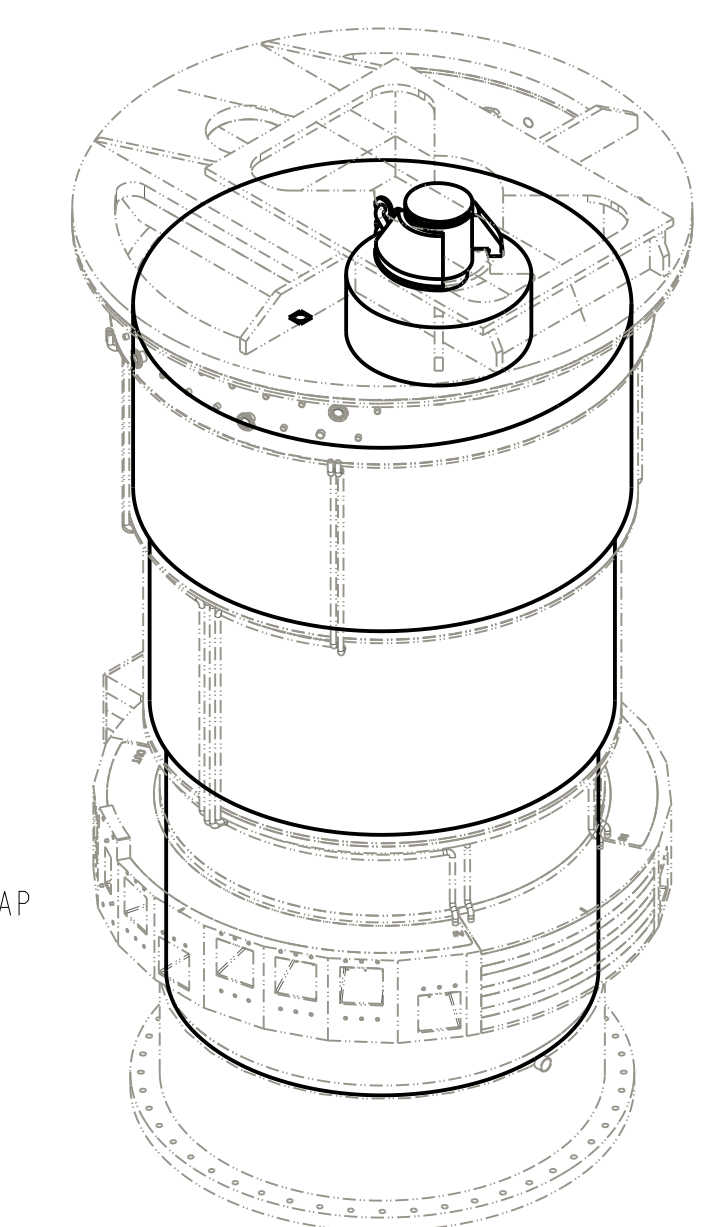
THIS DRAWING IS THE PROPERTY OF OAK RIDGE NATIONAL LABORATORY.

APPROVAL BLOCK

REV	DESCRIPTION OF CHANGE	DES	CHK	ENG	API	AP2	AP3	DATE
A	PRELIMINARY DRAFT							

NOTES:

- REFERENCE S01020500-1ST10205.
- NOMINAL BOUNDARY GEOMETRY DEFINED BY THE ASSOCIATED CAD GEOMETRY
- VESSEL SYSTEMS ALLOTMENT IS RELATIVE MOTION OF THE VESSEL SYSTEMS BOUNDARY RELATIVE TO THE MRA MOUNTING INTERFACE SHOWN IN DETAIL G ON SHEET 4.
- BOTH TARGET ASSEMBLY AND MRA MOUNT TO VESSEL SYSTEMS. VESSEL SYSTEMS ALLOTMENT IS RELATIVE MOTION OF THESE MOUNTING INTERFACES SHOWN IN DETAIL F AND G ON SHEET 4, INCLUDING PROJECTED DEFLECTIONS WHICH RESULTS FROM ANGULAR DEFLECTION OF MOUNTING INTERFACES.
- VESSEL SYSTEMS ALLOTMENT IS RELATIVE MOTION OF THE VESSEL SYSTEMS BOUNDARY RELATIVE TO THE TARGET MOUNTING INTERFACE, SHOWN IN DETAIL F ON SHEET 4.



G  
23  
TARGET TO VESSEL SYSTEMS  
NOMINAL VERTICAL GAP  
ZONE 1

3

MRA TO VESSEL SYSTEMS				
ZONE	NOMINAL GAP	MRA ALLOTMENT	VESSEL SYSTEMS ALLOTMENT	MINIMUM GAP
A HORZ	10mm	±2mm	±3mm	5mm
B VERT	10mm	±2mm	±3mm	5mm
C TRANSFER	12mm	±7mm	±4.5mm	0.5mm

4

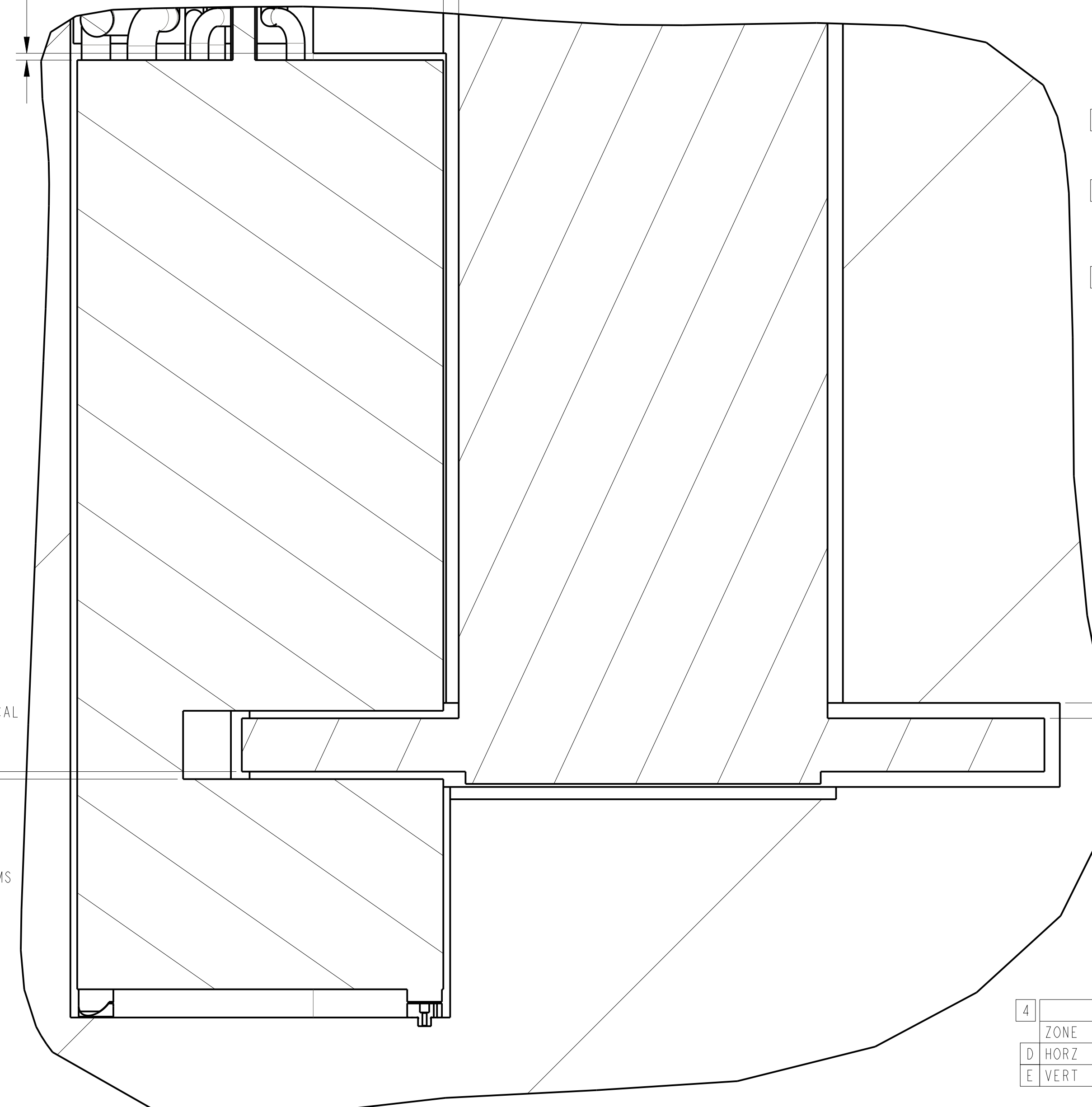
TARGET TO MRA					
ZONE	NOMINAL GAP	TARGET ALLOTMENT	MRA ALLOTMENT	VESSEL SYSTEMS ALLOTMENT	MINIMUM GAP
D HORZ	22.5mm	±13.75mm	±2mm	±6.5mm	0.25mm
E VERT	10mm	±3mm	±2mm	±2mm	3mm

5

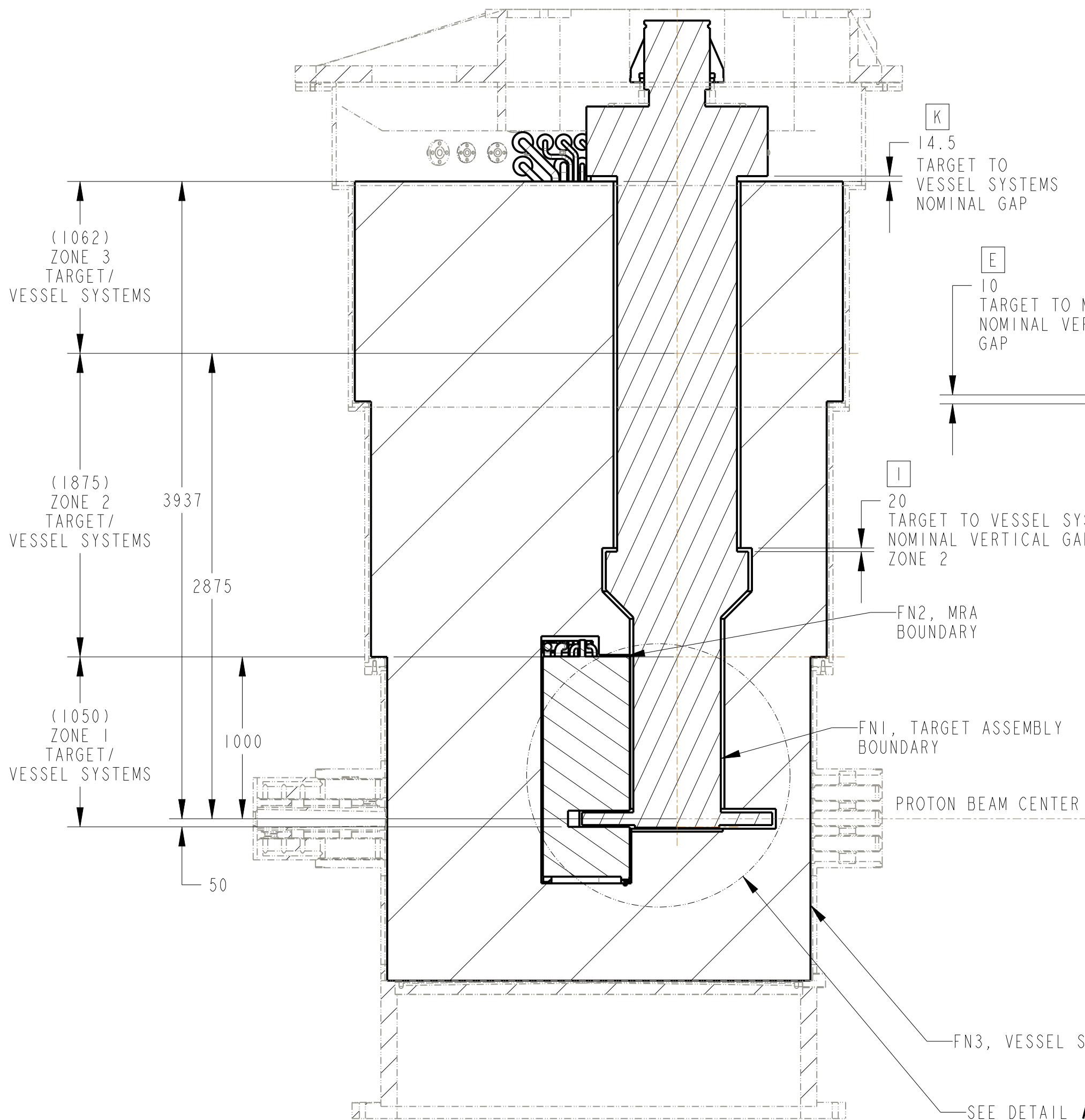
TARGET TO VESSEL SYSTEMS				
ZONE	NOMINAL GAP	TARGET ALLOTMENT	VESSEL SYSTEMS ALLOTMENT	MINIMUM GAP
F 1 HORZ	23mm	±13.75mm	±9mm	0.25mm
G 1 VERT	23mm	±3mm	±3mm	17mm
H 2 HORZ	20mm	±13mm	±6.75mm	0.25mm
I 2 VERT	20mm	±3mm	±3.75mm	13.25mm
J 3 HORZ	14.5mm	±7.5mm	±6.75mm	0.25mm
K 3 VERT	14.5mm	±3mm	±4.5mm	7mm

D  
22.5  
TARGET TO MRA  
NOMINAL HORIZONTAL GAP

B  
10  
MRA TO VESSEL SYSTEMS  
VERTICAL GAP



DETAIL A  
SCALE 1:5



SECTION A-A  
SCALE 1:25

(1062) ZONE 3  
TARGET/  
VESSEL SYSTEMS

(1875) ZONE 2  
TARGET/  
VESSEL SYSTEMS

(1050) ZONE 1  
TARGET/  
VESSEL SYSTEMS

3937

2875

1000

50

K  
14.5  
TARGET TO VESSEL SYSTEMS  
NOMINAL GAP

E  
10  
TARGET TO MRA  
NOMINAL VERTICAL GAP

I  
20  
TARGET TO VESSEL SYSTEMS  
NOMINAL VERTICAL GAP  
ZONE 2

FN2, MRA  
BOUNDARY

FN1, TARGET ASSEMBLY  
BOUNDARY

PROTON BEAM CENTER

FN3, VESSEL SYSTEMS BOUNDARY

SEE DETAIL A

DESCRIPTION	PART NUMBER	QTY	FIND NO.
VESSEL SYSTEMS BOUNDARY	S03070000-M8U-8800-A10000-BD		3
MODERATOR REFLECTOR ASSEMBLY BOUNDARY	S03040000-M8U-8800-A10000-BD		2
TARGET ASSEMBLY BOUNDARY	S03020000-M8U-8800-A10000-BD		1

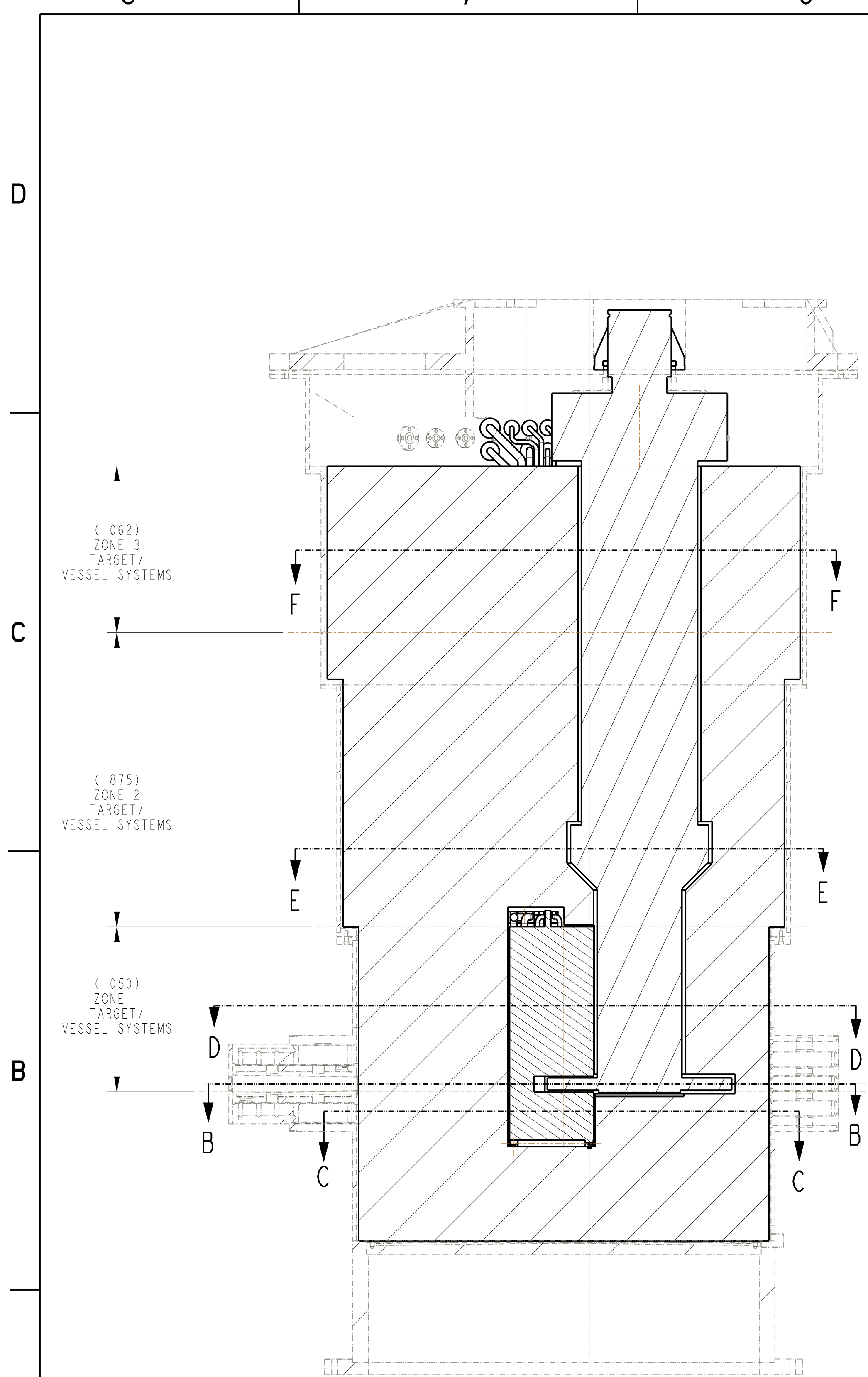
UNITS: MILLIMETERS



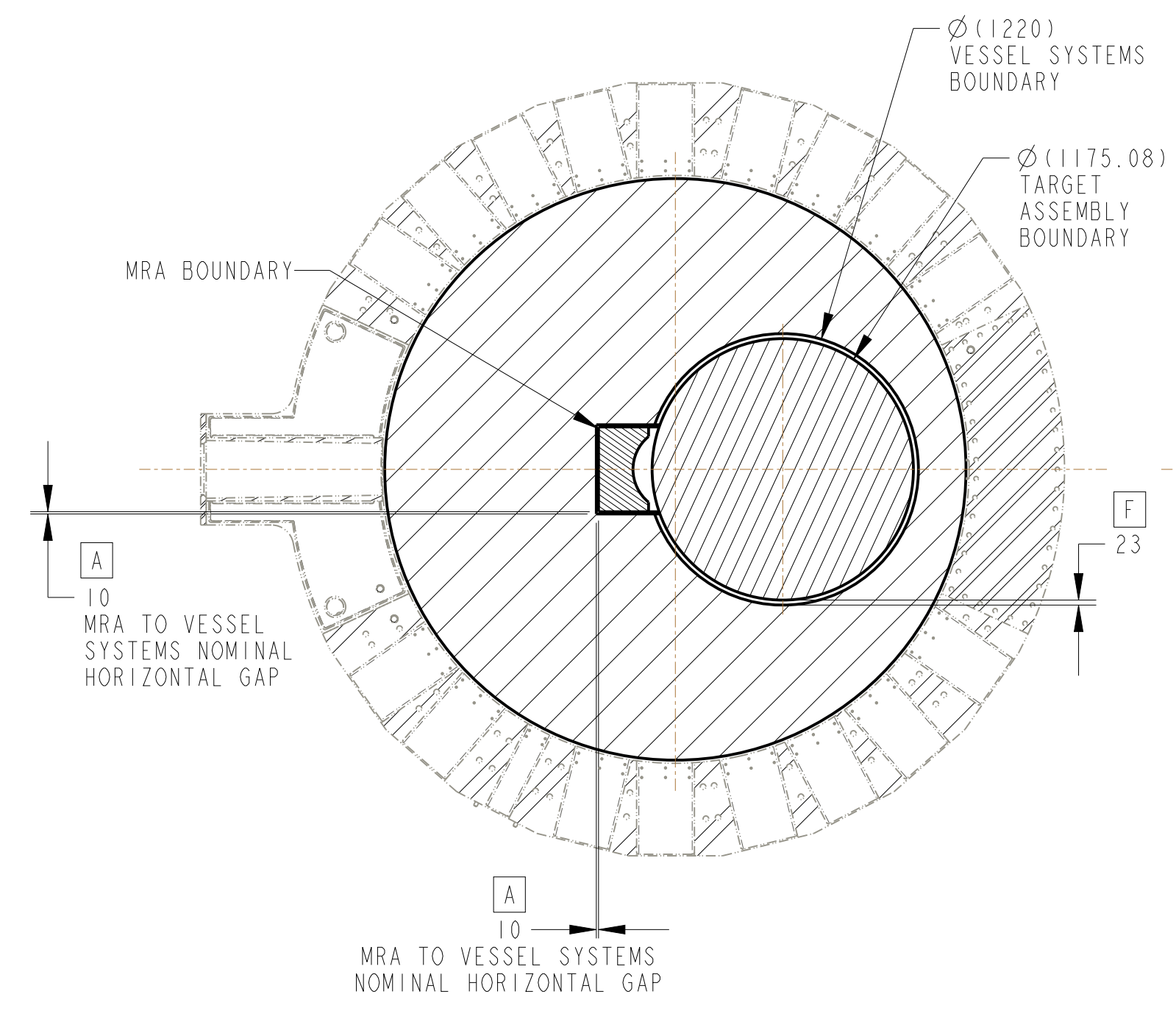
SECOND TARGET STATION  
TARGET SYSTEMS  
TARGET-MRA-VESSEL SYSTEMS INTERFACE

DRAFTING STD: ASME Y14.100 D & T: ASME Y14.5 WELD SYMBOLS: AWS A2.4	DRAWING NUMBER S03000000-M8U-8800-A10001	REV A
THIRD ANGLE PROJECTION	SIZE SCALE D 41:1600	WEIGHT N/A
		SHEET 1 of 4

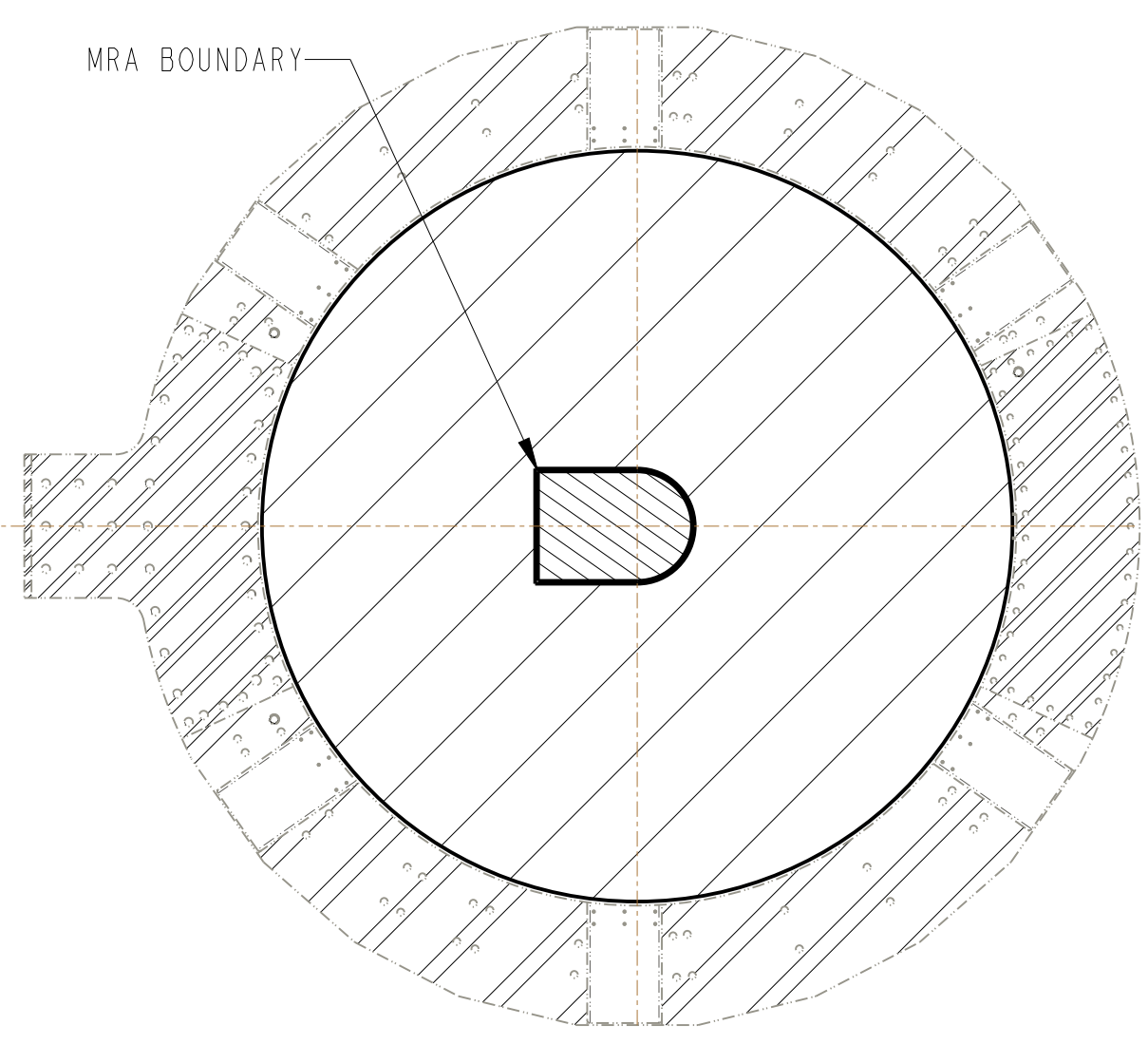
8 7 6 5 4 3 2 1



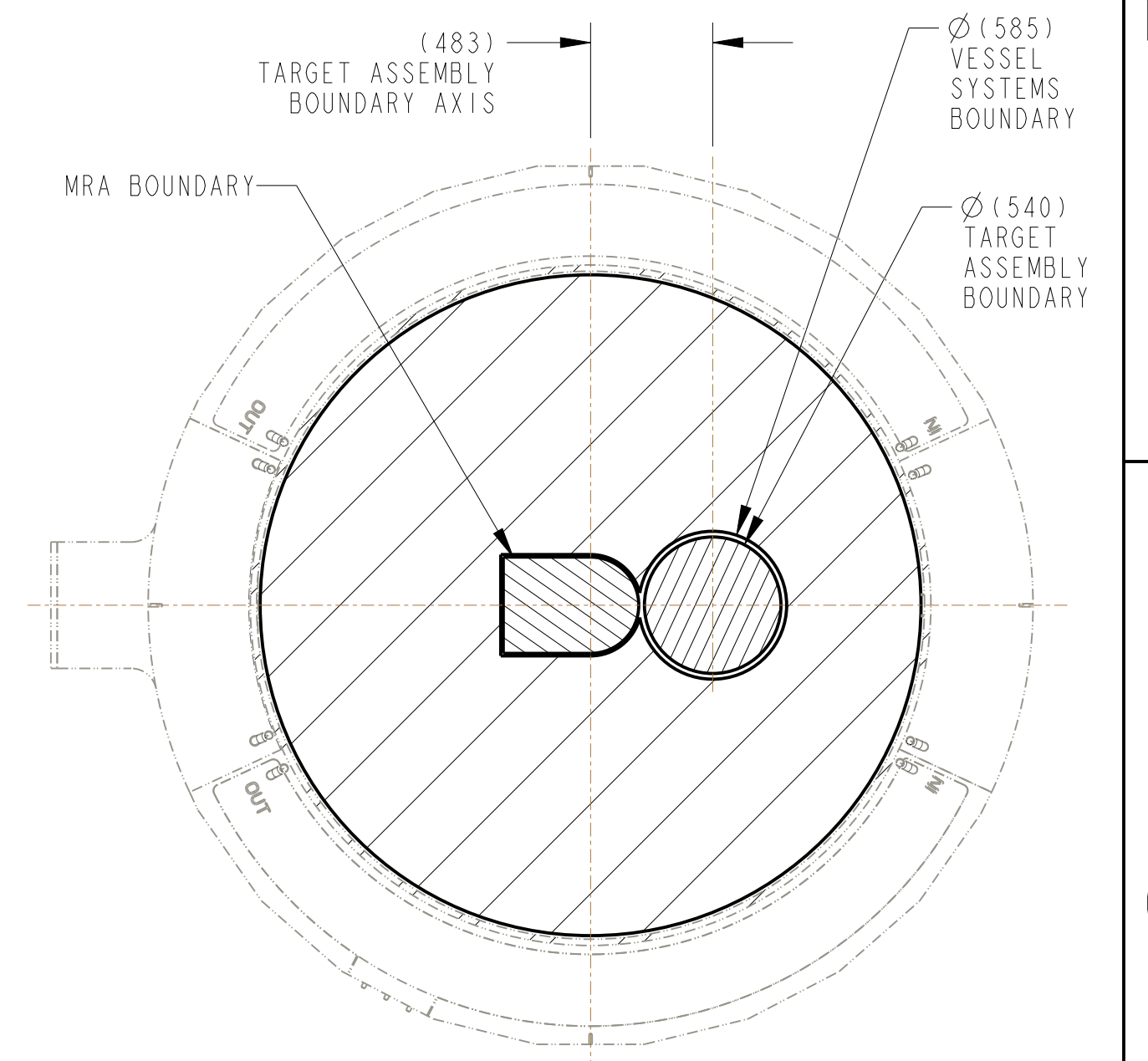
SECTION A-A  
SCALE 1:20  
SHEET 1



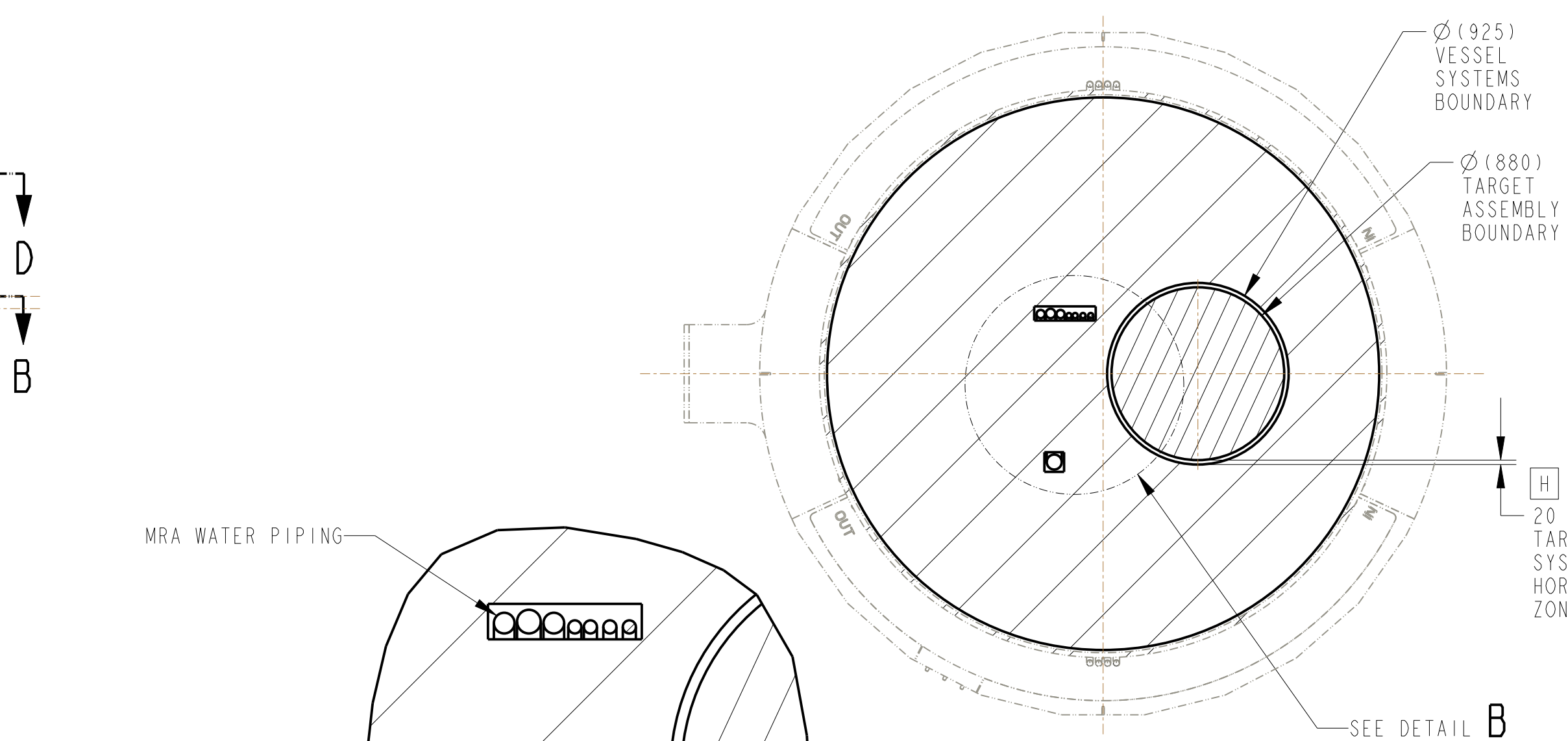
SECTION B-B  
SCALE 1:25



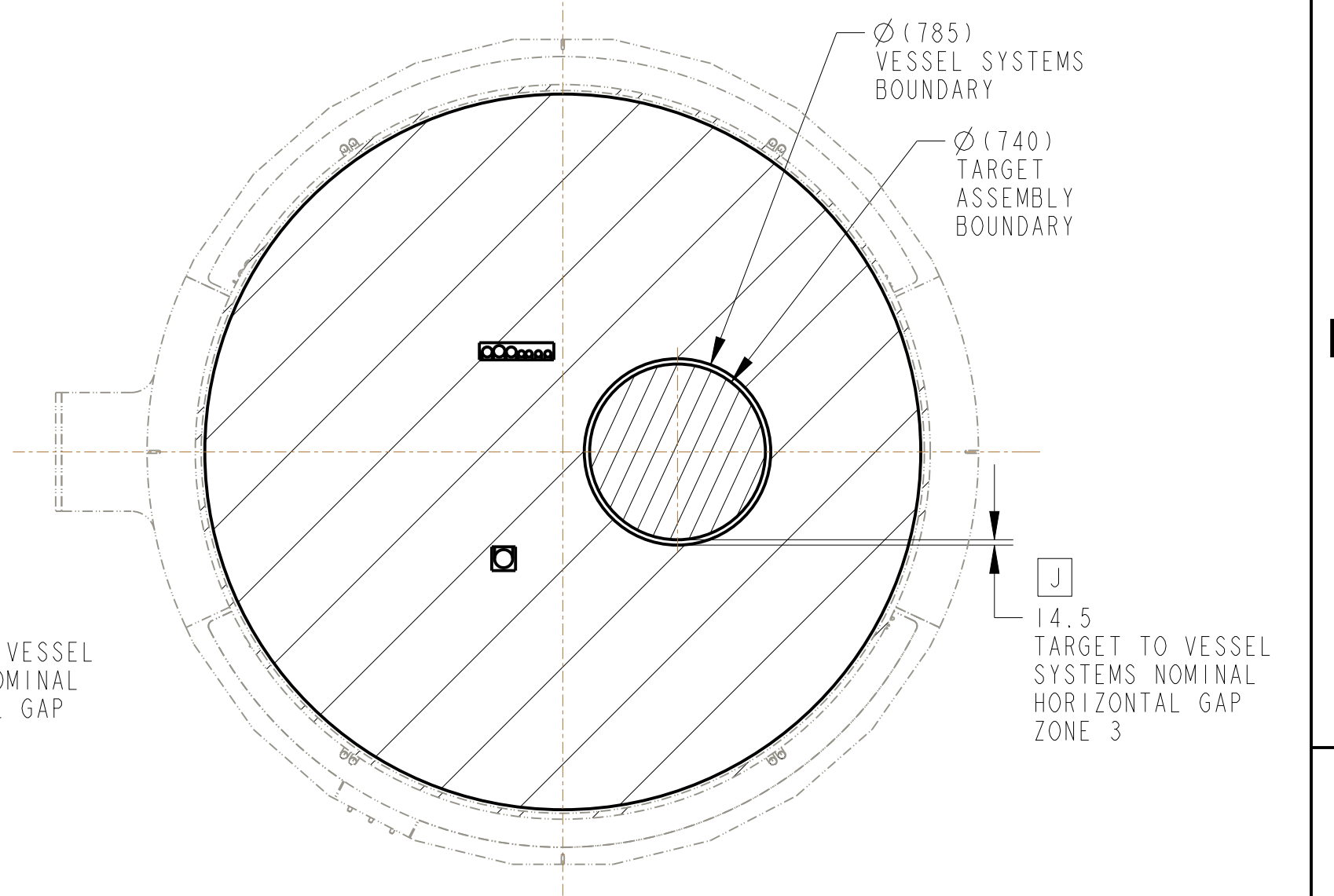
SECTION C-C  
SCALE 1:25



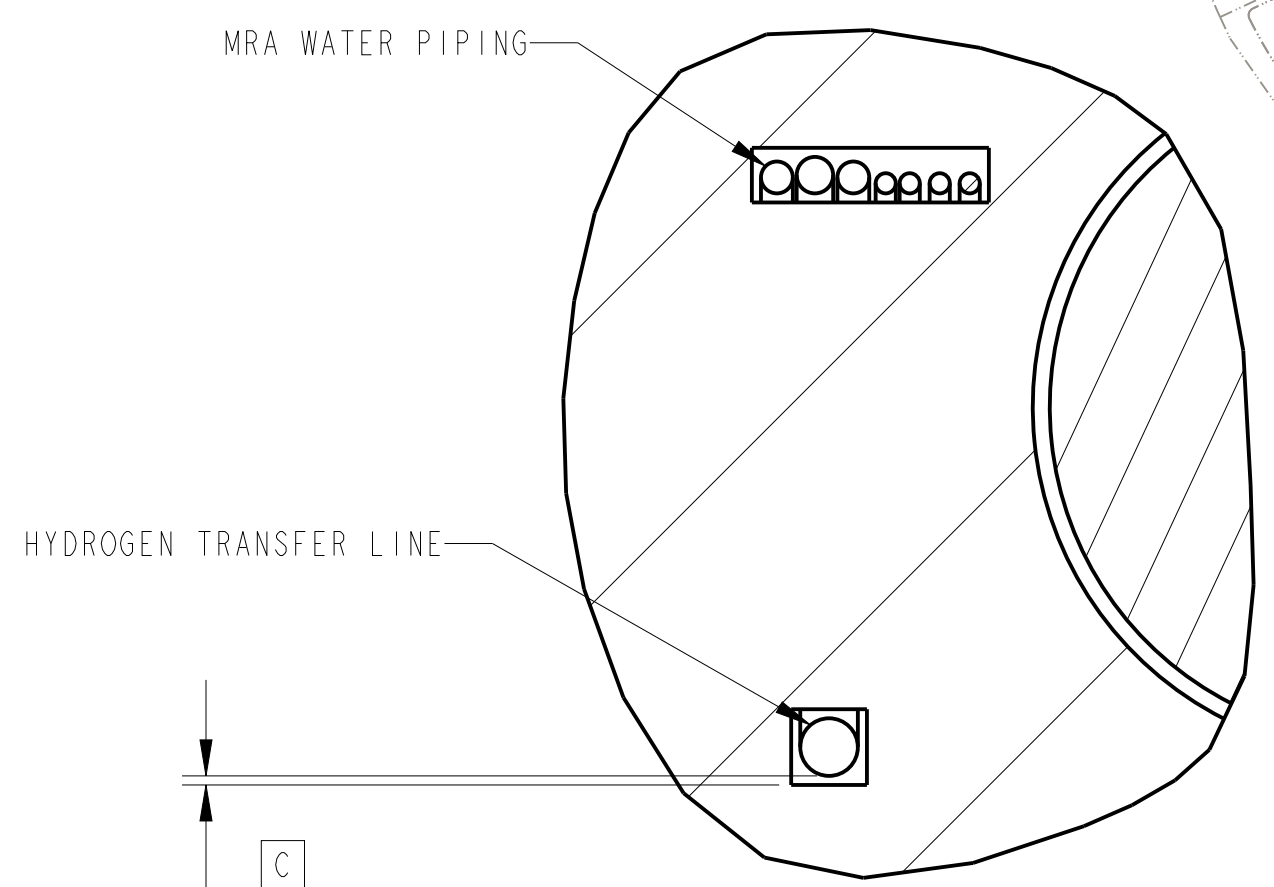
SECTION D-D  
SCALE 1:25



SECTION E-E  
SCALE 1:25



SECTION F-F  
SCALE 1:25



DETAIL B  
SCALE 1:10

SIZE	SCALE	SHEET	DRAWING NUMBER	REV
D	41:1600	2 OF 4	S03000000-M8U-8800-A10001	A

8 7 6 5 4 3 2 1

D

D

C

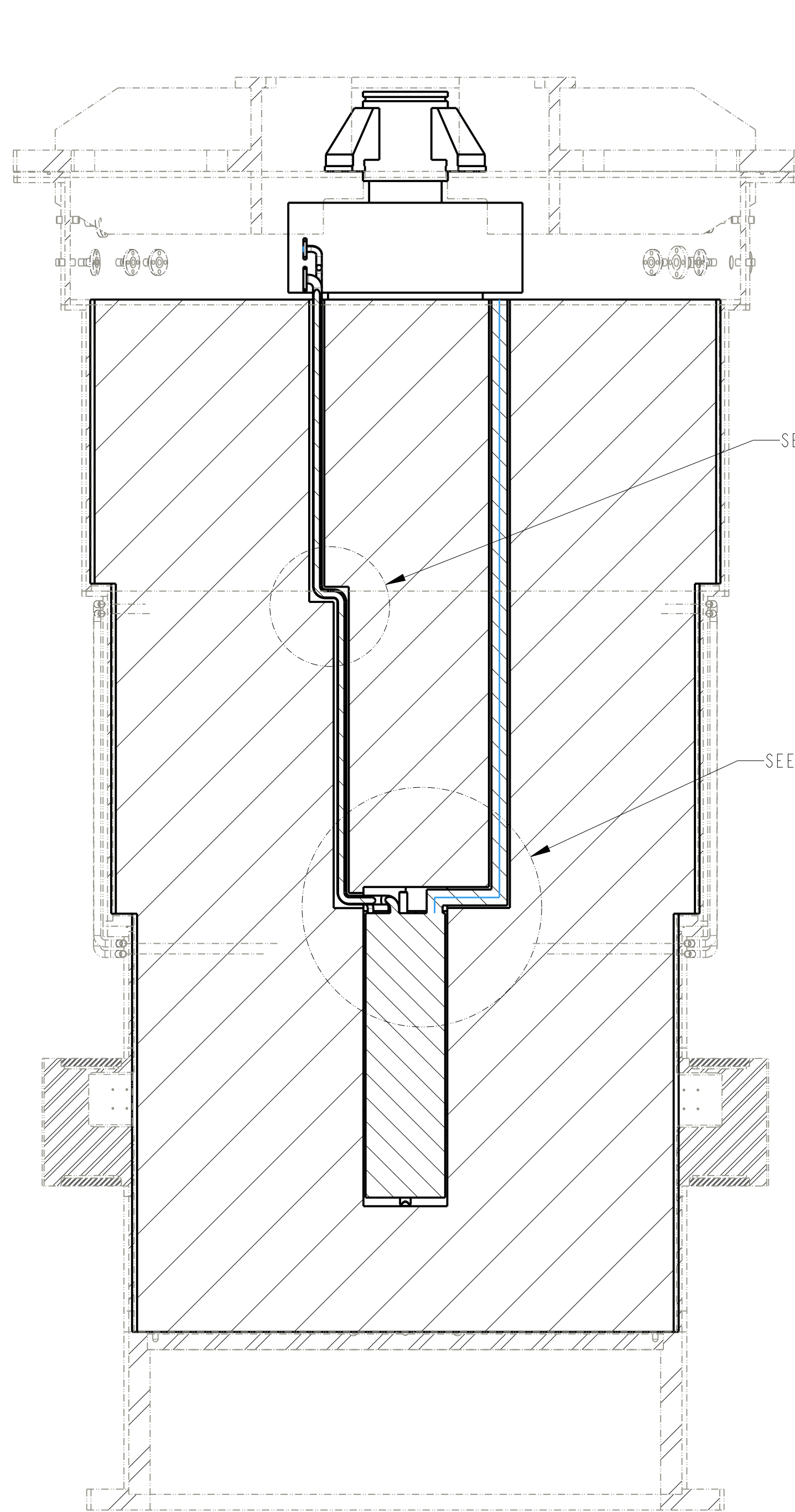
C

B

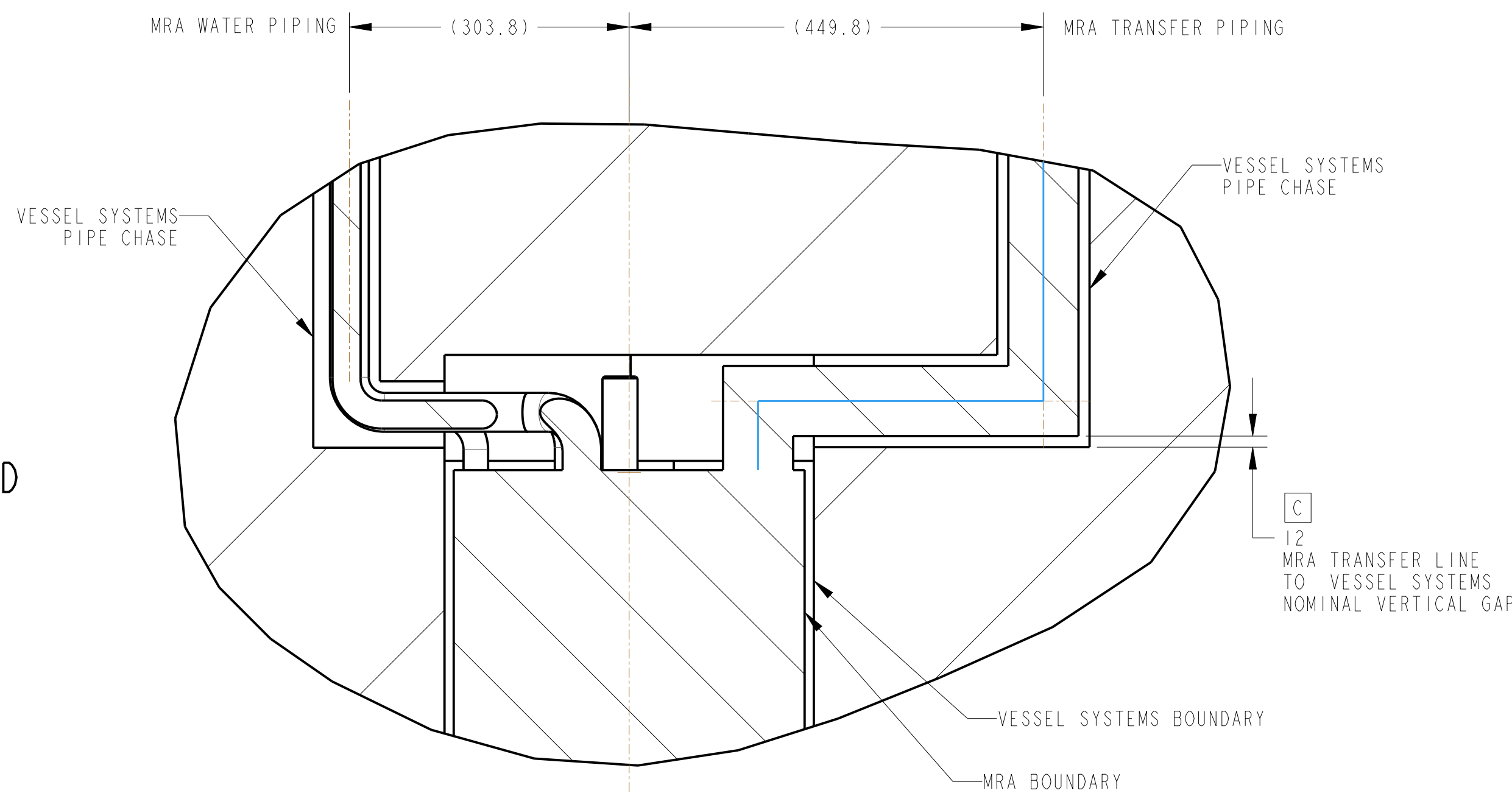
B

A

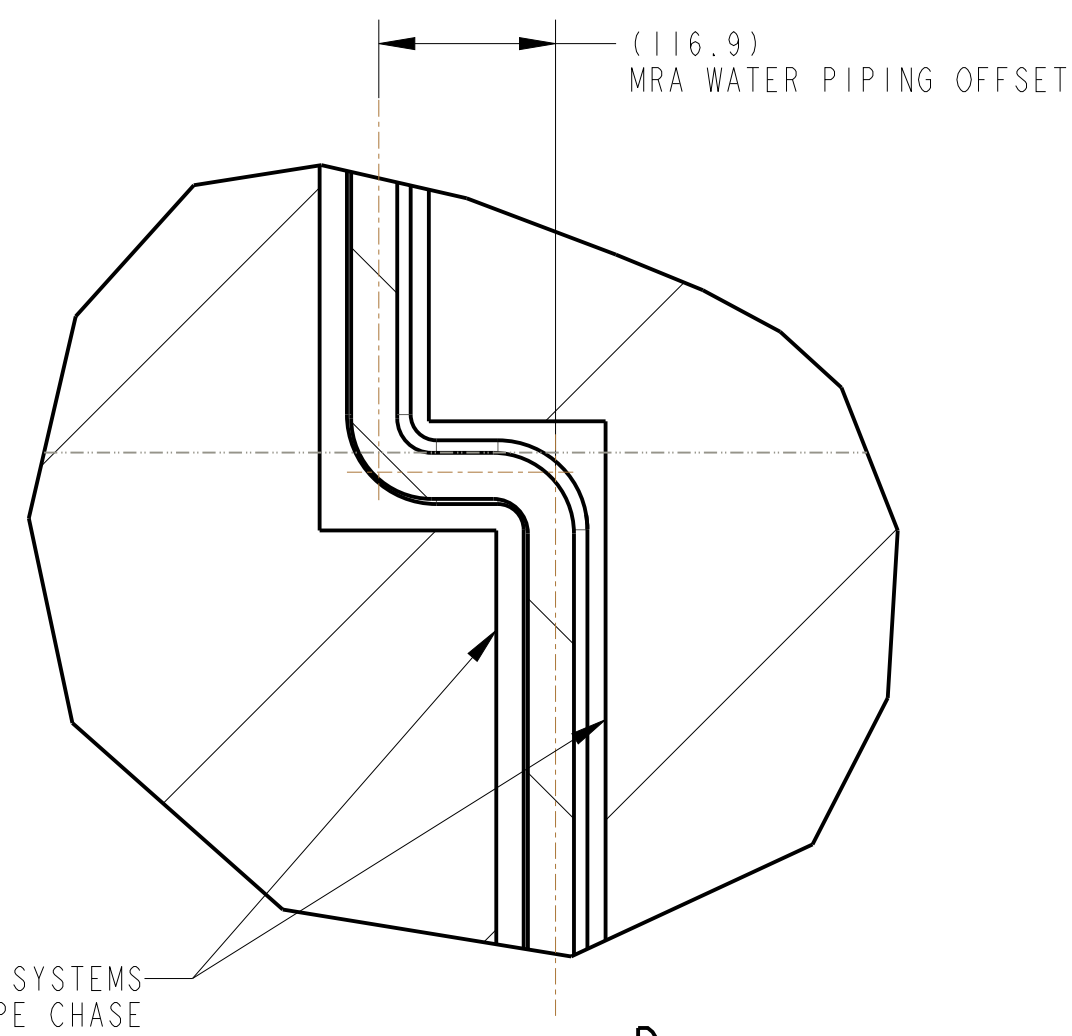
A



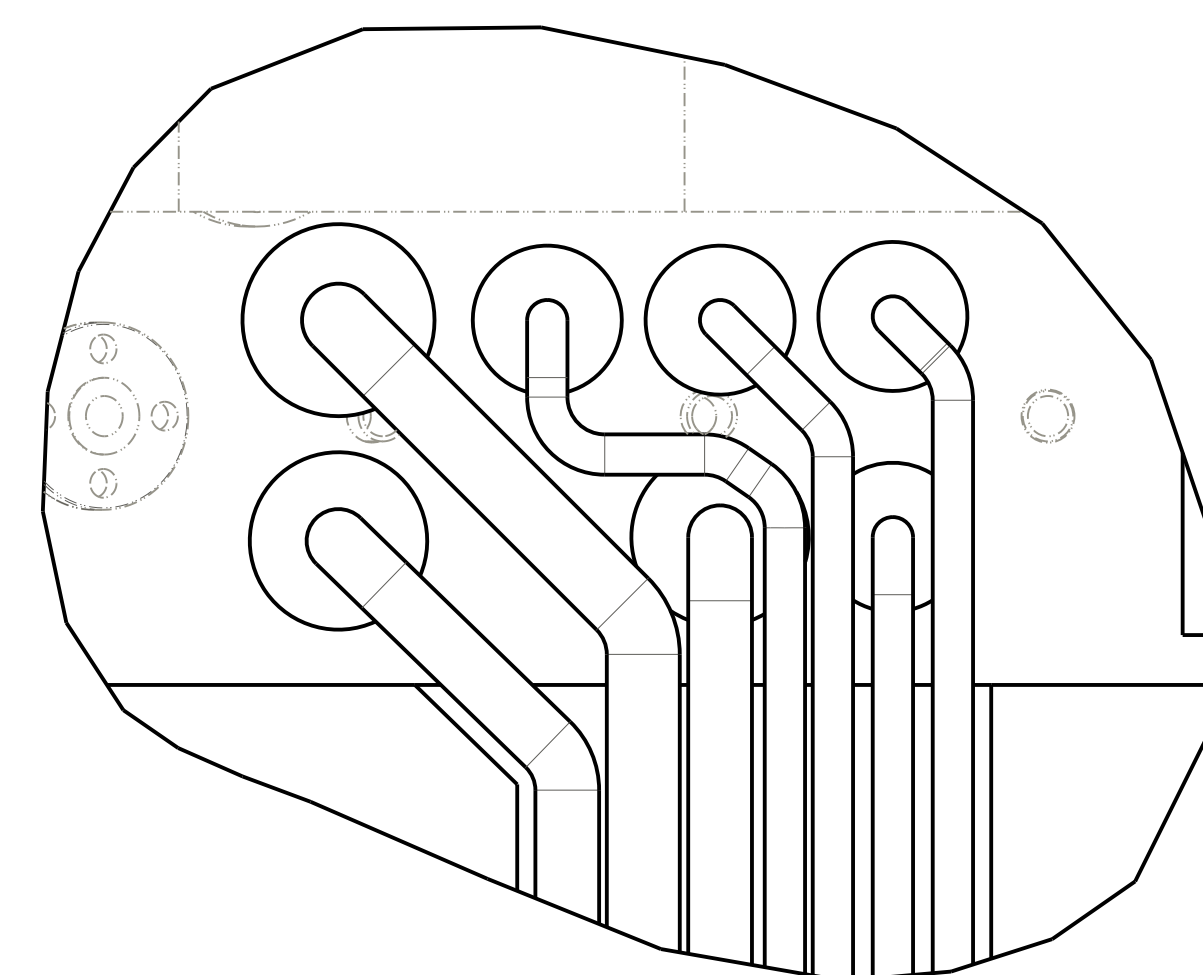
SECTION H-H  
SCALE 1:20  
SHEET 1



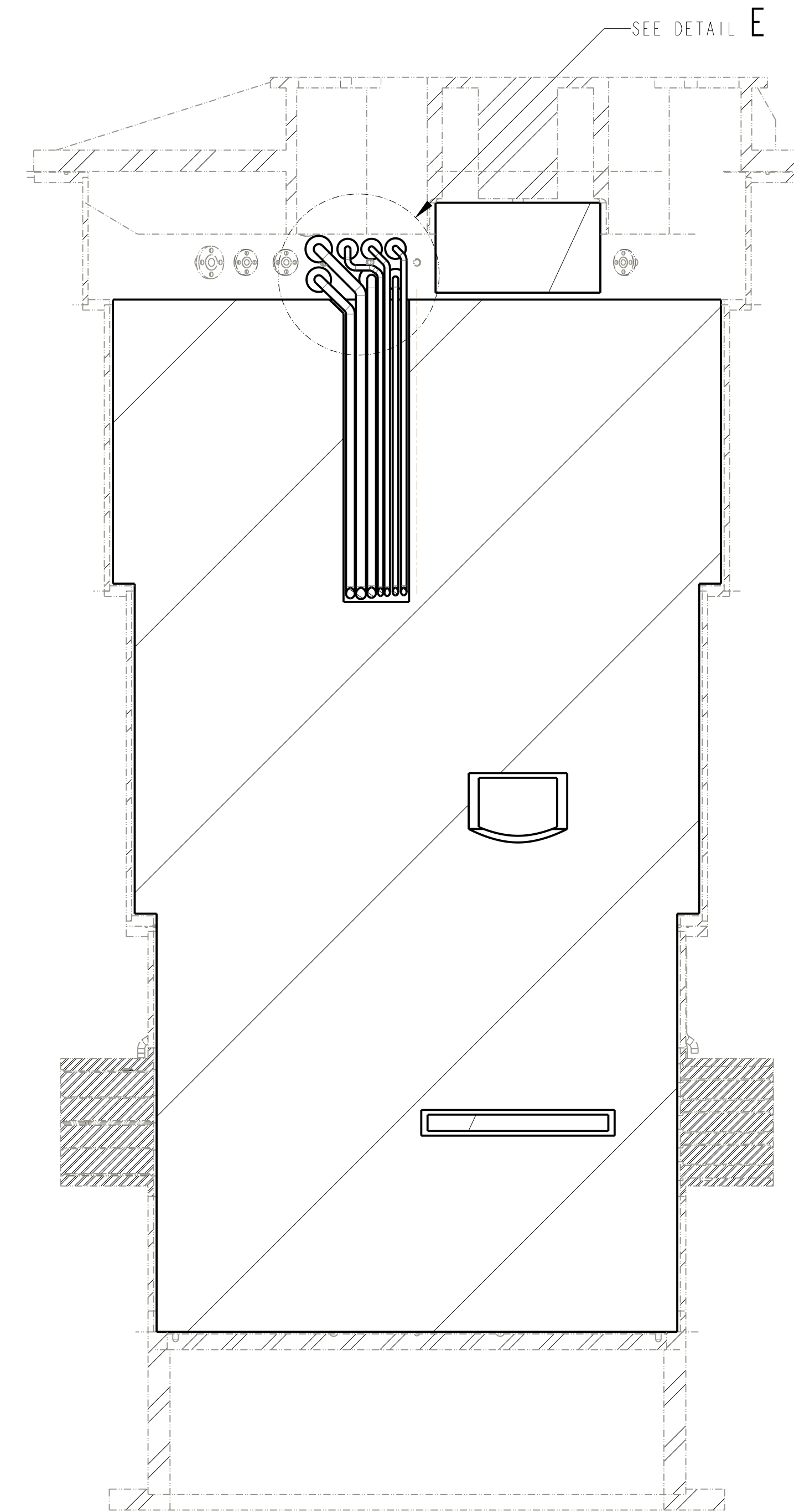
DETAIL C  
SCALE 1:5



DETAIL D  
SCALE 1:5



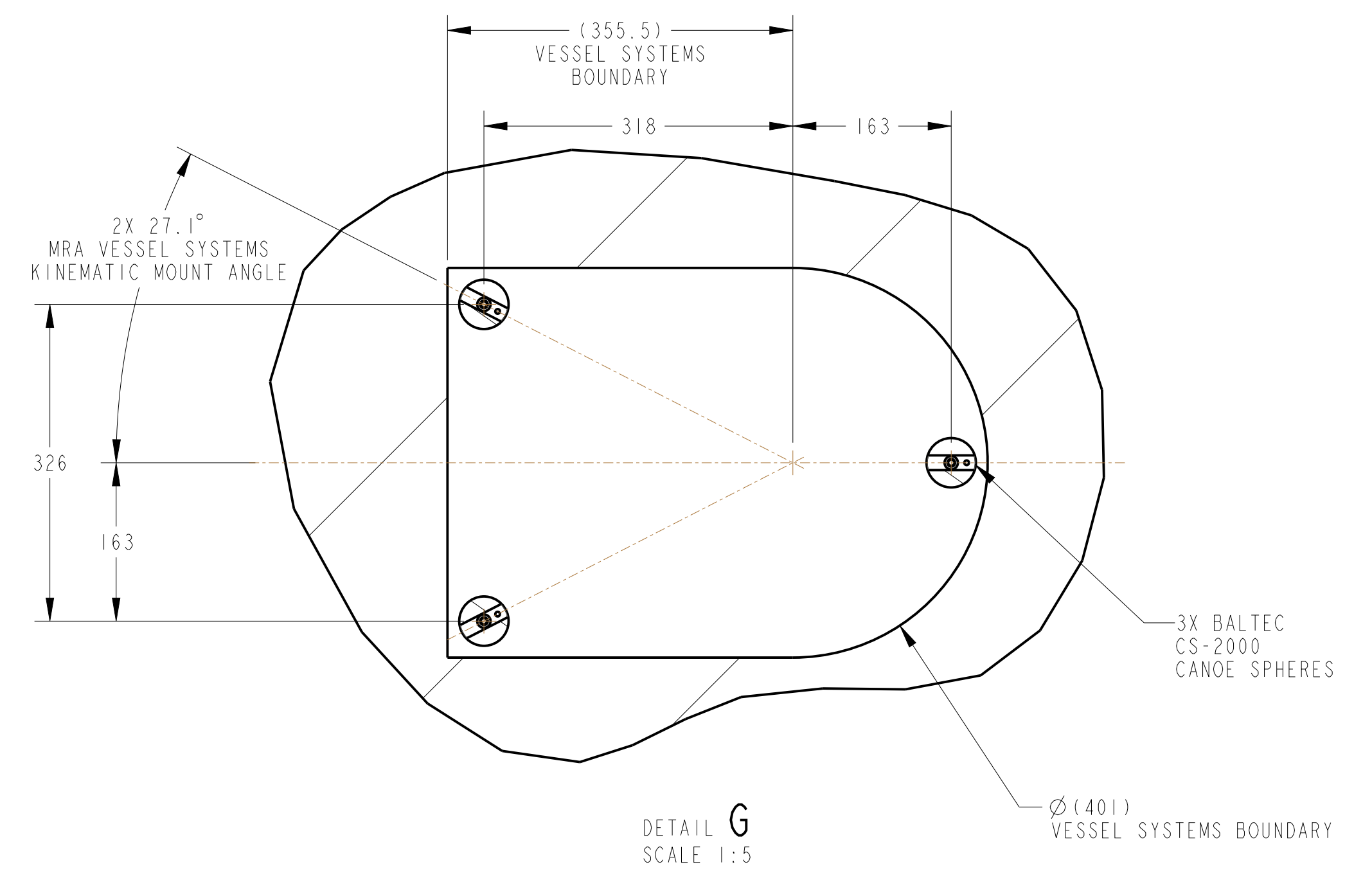
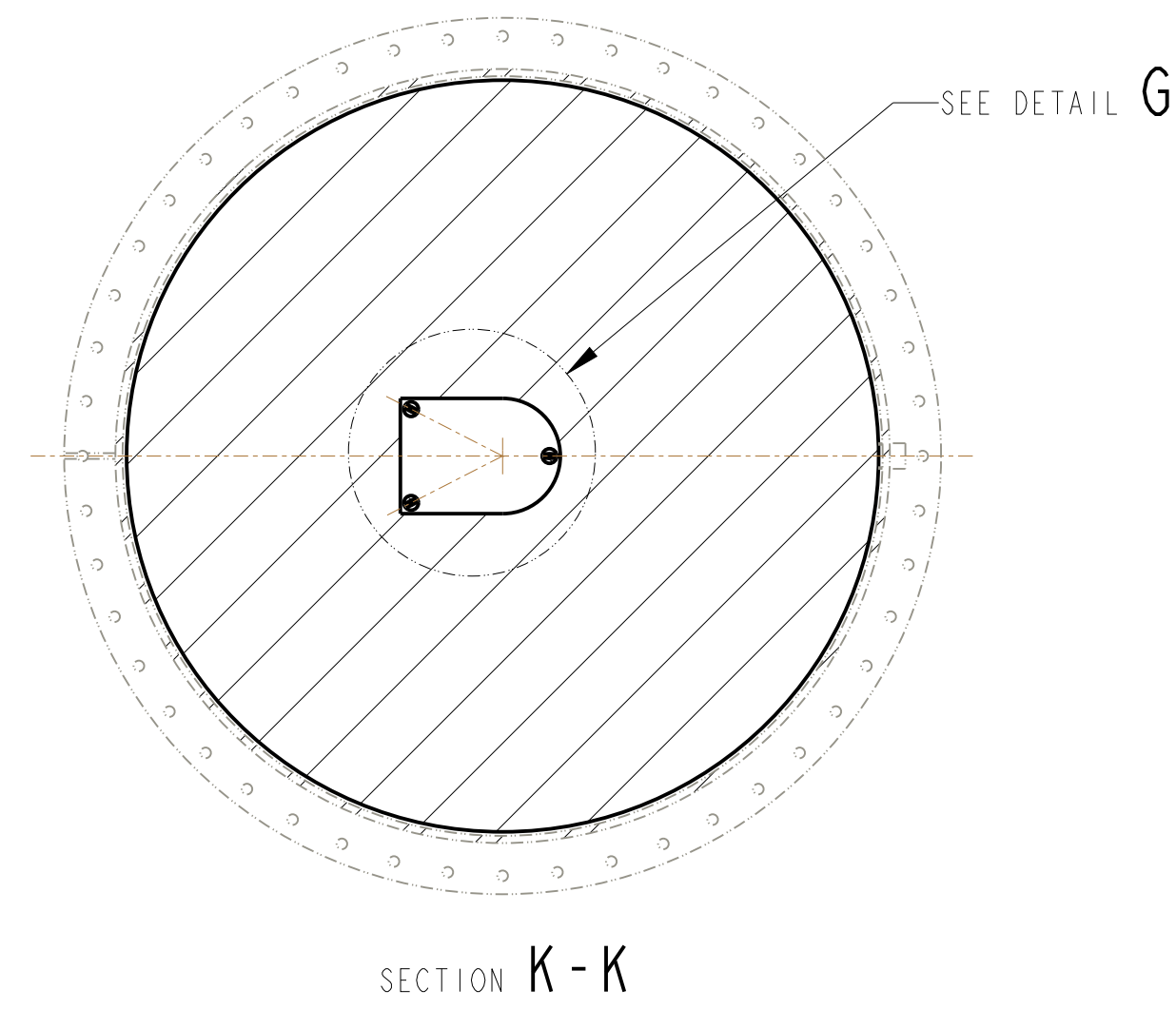
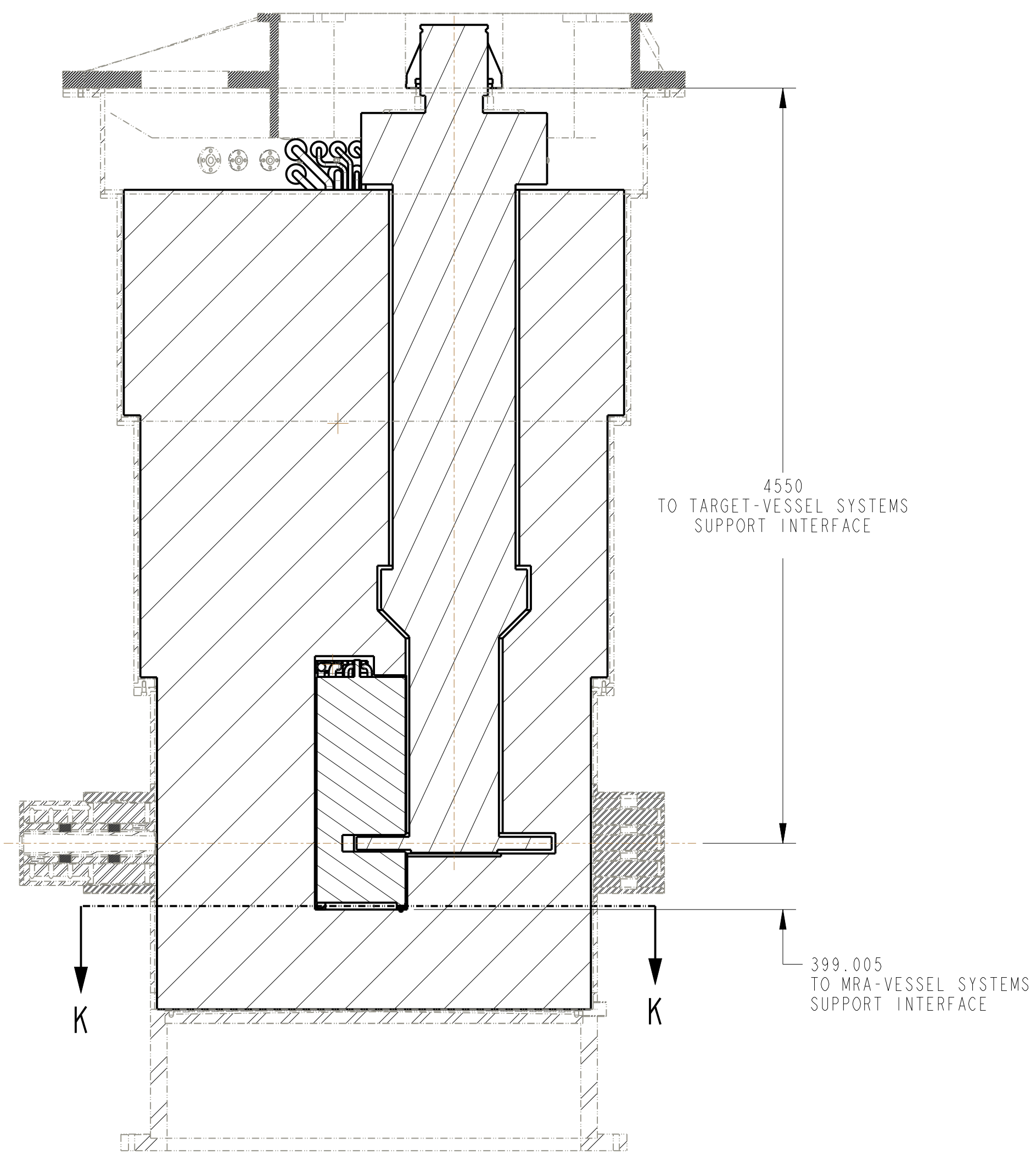
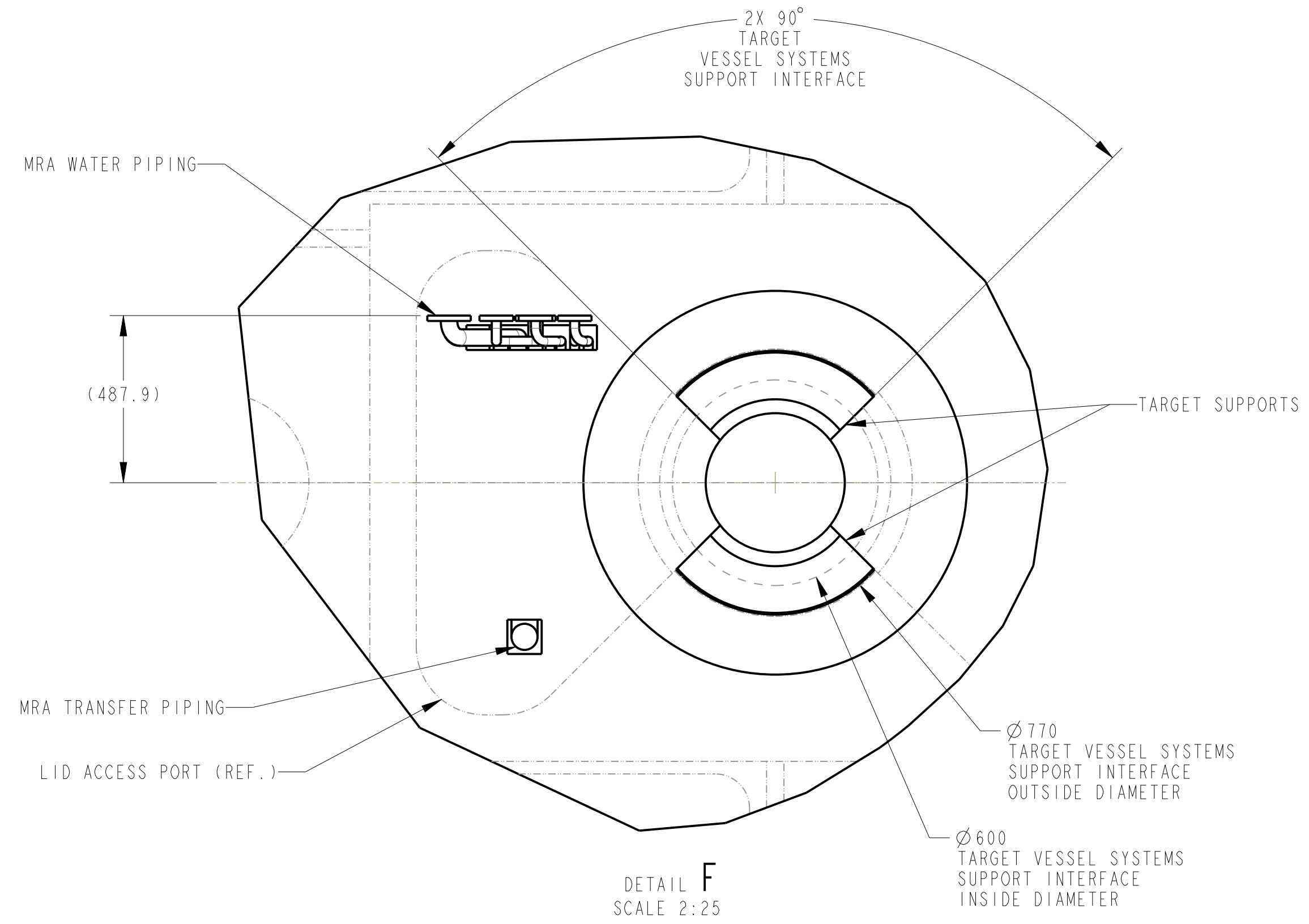
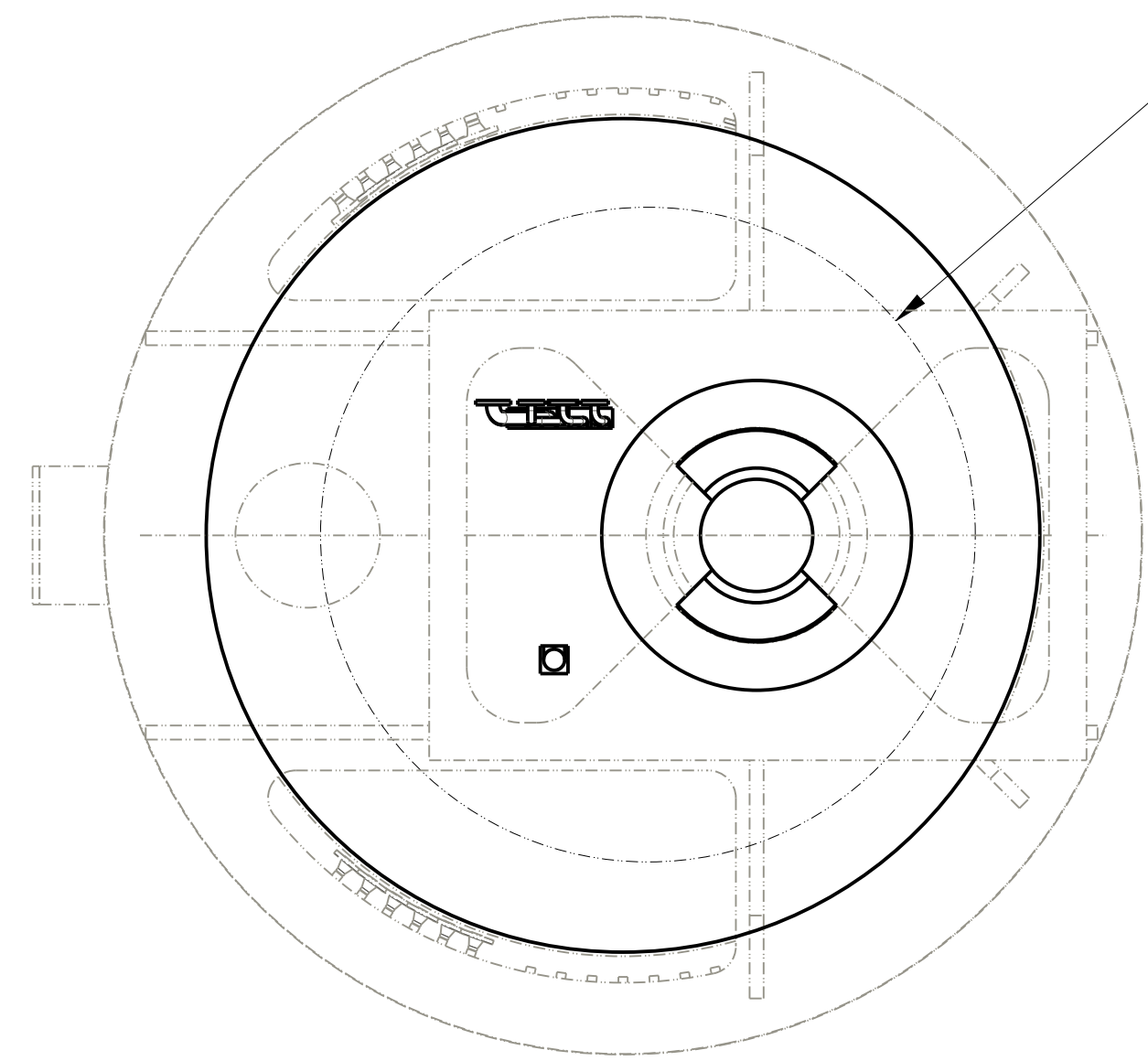
DETAIL E  
SCALE 1:5



SECTION J-J  
SCALE 1:20  
SHEET 1

SIZE	SCALE	SHEET	DRAWING NUMBER	REV
D	41:1600	3 OF 4	S03000000-M8U-8800-A10001	A

8 7 6 5 4 3 2 1



SIZE	SCALE	SHEET	DRAWING NUMBER	REV
D	41:1600	4 OF 4	503000000-M8U-8800-A10001	A