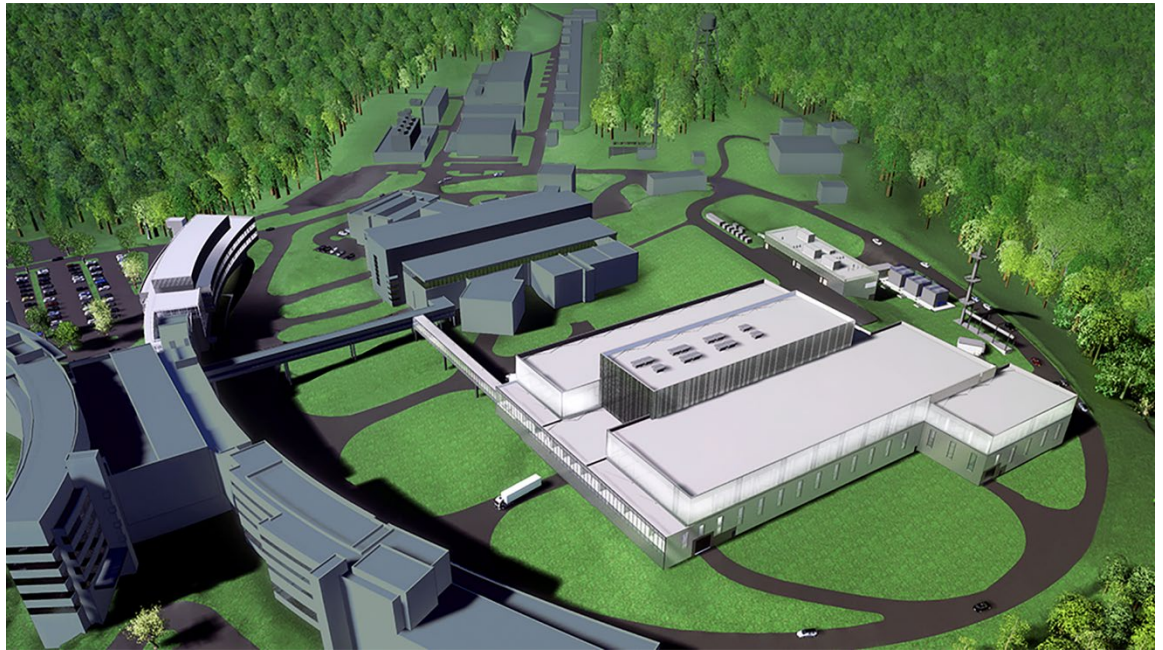


Second Target Station Project: Interface Sheet – Target Station Shielding (S.03.07) to Remote Handling (S.03.10)



Chris Anton
Steve Schrick

March 2025



DOCUMENT AVAILABILITY

Reports produced after January 1, 1996, are generally available free via OSTI.GOV.

Website www.osti.gov

Reports produced before January 1, 1996, may be purchased by members of the public from the following source:

National Technical Information Service
5285 Port Royal Road
Springfield, VA 22161
Telephone 703-605-6000 (1-800-553-6847)
TDD 703-487-4639
Fax 703-605-6900
E-mail info@ntis.gov
Website <http://classic.ntis.gov/>

Reports are available to US Department of Energy (DOE) employees, DOE contractors, Energy Technology Data Exchange representatives, and International Nuclear Information System representatives from the following source:

Office of Scientific and Technical Information
PO Box 62
Oak Ridge, TN 37831
Telephone 865-576-8401
Fax 865-576-5728
E-mail reports@osti.gov
Website <https://www.osti.gov/>

This report was prepared as an account of work sponsored by an agency of the United States Government. Neither the United States Government nor any agency thereof, nor any of their employees, makes any warranty, express or implied, or assumes any legal liability or responsibility for the accuracy, completeness, or usefulness of any information, apparatus, product, or process disclosed, or represents that its use would not infringe privately owned rights. Reference herein to any specific commercial product, process, or service by trade name, trademark, manufacturer, or otherwise, does not necessarily constitute or imply its endorsement, recommendation, or favoring by the United States Government or any agency thereof. The views and opinions of authors expressed herein do not necessarily state or reflect those of the United States Government or any agency thereof.

Second Target Station Project

**INTERFACE SHEET – TARGET STATION SHIELDING (S.03.07) TO REMOTE
HANDLING (S.03.10)**

Chris Anton
Steve Schrick

March 2025

Prepared by
OAK RIDGE NATIONAL LABORATORY
Oak Ridge, TN 37831
managed by
UT-BATTELLE LLC
for the
US DEPARTMENT OF ENERGY
under contract DE-AC05-00OR22725

Approvals

Document Title: Interface Sheet – Target Station Shielding (S.03.07) to Remote Handling (S.03.10)

ISSUE DATE:
3/25/2025

PREPARED BY
Anton, Chris

PROJECT
Second Target Station

DOCUMENT NUMBER:
S03000000-IST10007

	Signature / Date					
	Rev. 00	Date	Rev. 01	Date	Rev. 02	Date
Vessel Systems Lead Engineer						
Remote Handling Lead Engineer						
Target Systems Team Leader						

Revision	Description
00	Initial Release

CONTENTS

CONTENTS.....	iii
1. Lifting Interface Details.....	1

1. LIFTING INTERFACE DETAILS

The following Target Station Shielding components require removal via Remote Handling during maintenance operations:

Pipe Pan Hatch Covers

Creo model name: S03060200-M8U-8800-A10296_BLK1.asm

Drawing number: TBD

Lifting Interface: Hoist rings

Component mass: <800 kg

Lifting device: TDR jib crane, temporary hoist or crane

Lifting point location (Target Systems global coordinates; x,y,z; mm): Variable, above pipe pan.

Component laydown area: Target drive room floor, High bay

Temporary storage cask required: No

Reason for removal: Water leak repair inside pipe pan (uncommon)

Proton Beam Window Removable Shield Block

Creo model name: S03060200-M8U-8800-A004-AS_FTS.asm

Drawing number: TBD

Lifting Interface: Ziplift stud 1.5"-8UN male thread

Component mass: 8,945 kg

Lifting device: Ziplift grapple coupled to High Bay Crane or Portable hoist

Lifting point location (Target Systems global coordinates; x,y,z; mm): TBD

Component laydown area: High bay

Temporary storage cask required: Yes

Reason for removal: Proton beam window replacement (Normal operations)

Proton Beam Window Shielding Removable Shield Block

Creo model name: S03060210-M8U-8800-A004-AS_FTS.asm

Drawing number: TBD

Lifting Interface: Ziplift stud 1.5"-8UN male thread

Component mass: 5,040 kg

Lifting device: Ziplift grapple coupled to High Bay Crane or Portable hoist

Lifting point location (Target Systems global coordinates; x,y,z; mm): TBD

Component laydown area: High bay

Temporary storage cask required: Yes, or other shielding solution

Reason for removal: Proton beam window shielding replacement (Uncommon)

Proton Beam Tube Assembly Clamp Removable Shield Block

Creo model name: S03060200-M8U-8800-A005-AS_FTS.asm

Drawing number: TBD

Lifting Interface: Hoist rings

Component mass: 19,170 kg

Lifting device: High Bay Crane

Lifting point location (Target Systems global coordinates; x,y,z; mm): TBD

Component laydown area: High bay

Temporary storage cask required: Yes, or other shielding solution

Reason for removal: Proton beam tube assembly service (Uncommon)