



SECOND
TARGET
STATION

Vessel Systems and Target Station Shielding Project and Scope

Chris Anton
Cam Eiland
Hogan Knott
Darren Dugan
Mike Strong

April 21, 2025



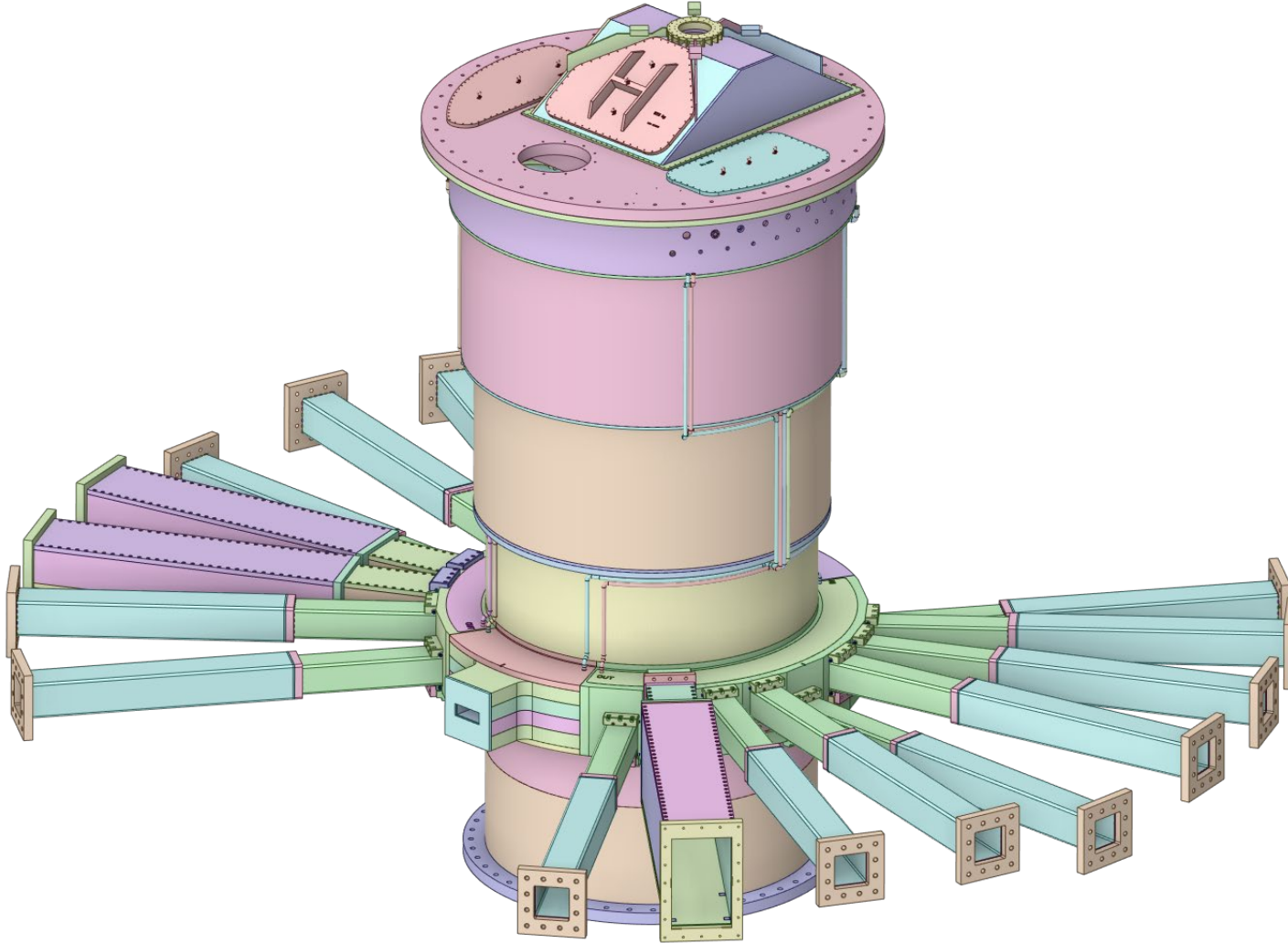
U.S. DEPARTMENT OF
ENERGY

ORNL IS MANAGED BY UT-BATTELLE LLC
FOR THE US DEPARTMENT OF ENERGY

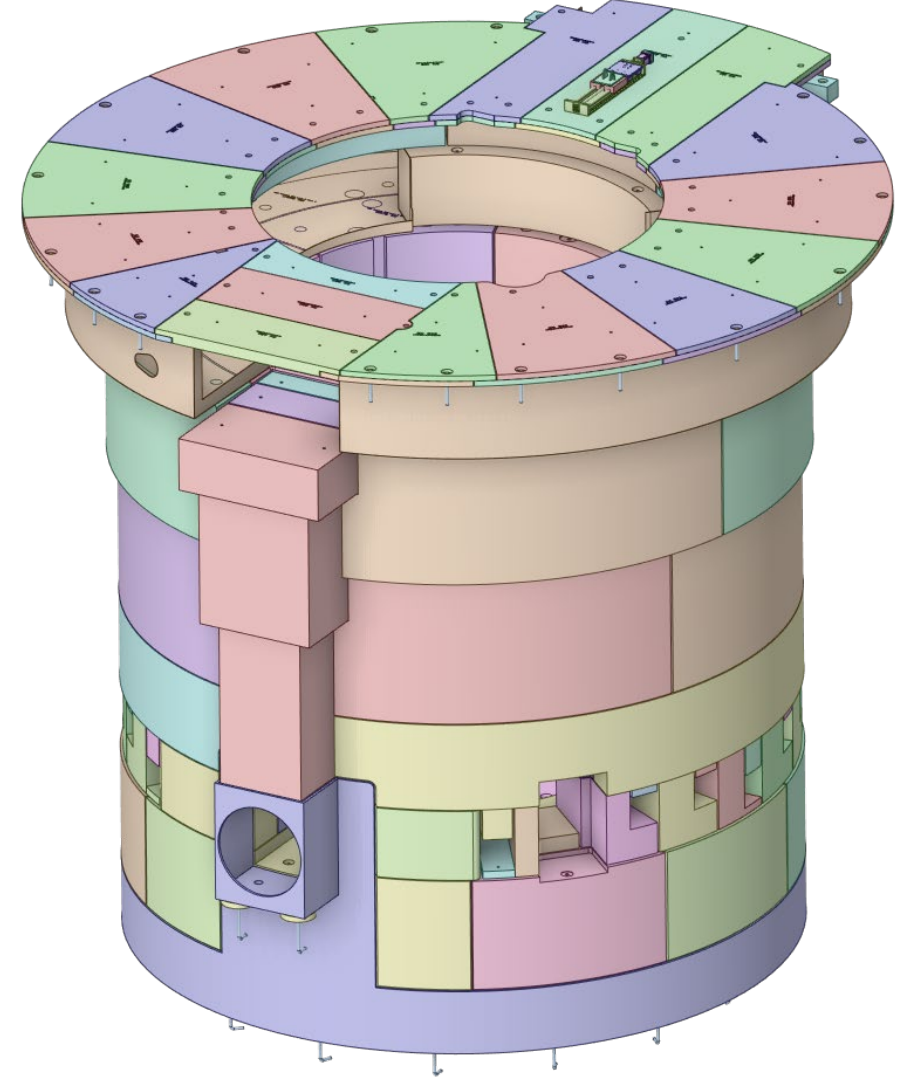


S.03.06 Vessel Systems and S.03.07 Target Station Shielding

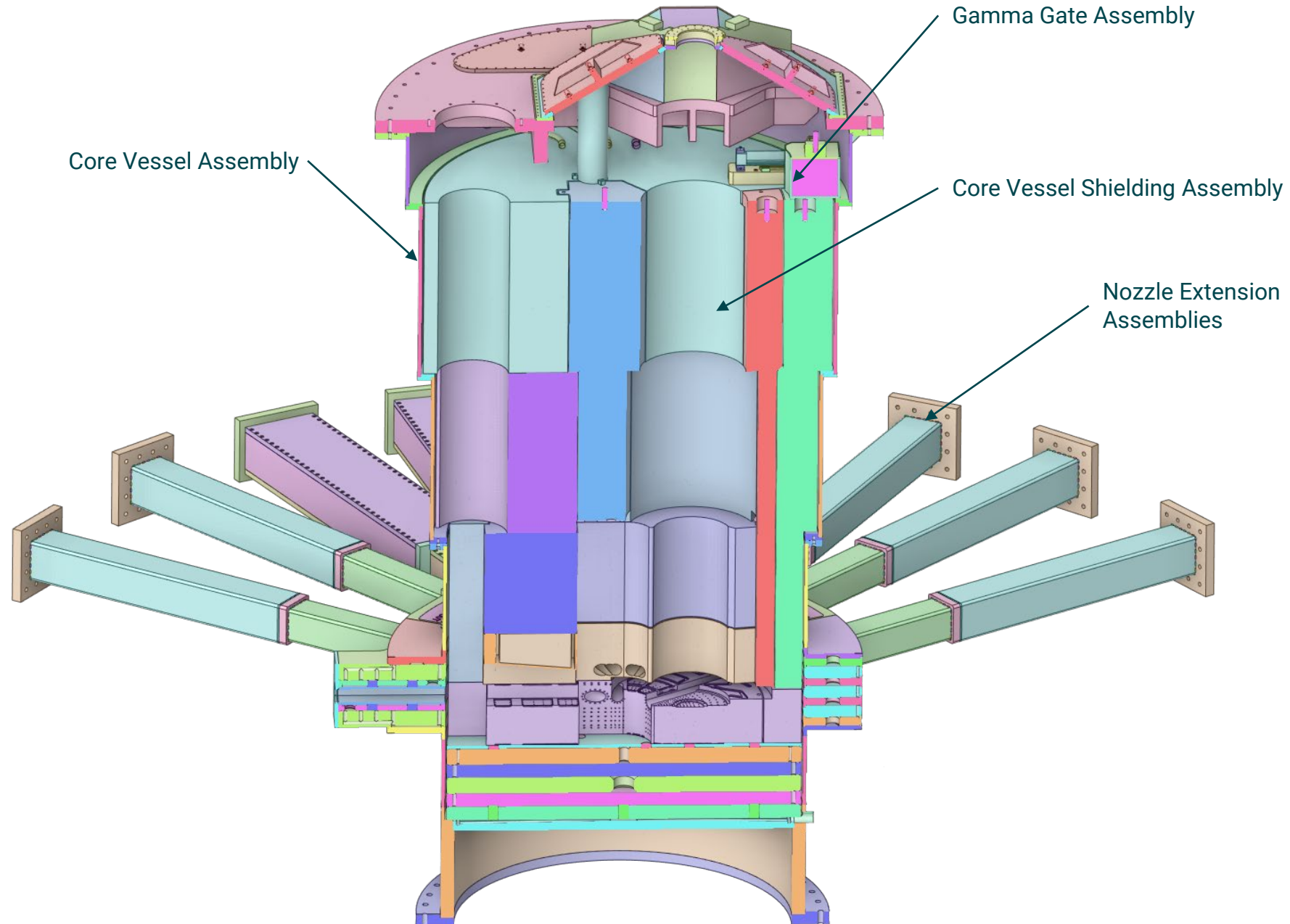
Vessel Systems



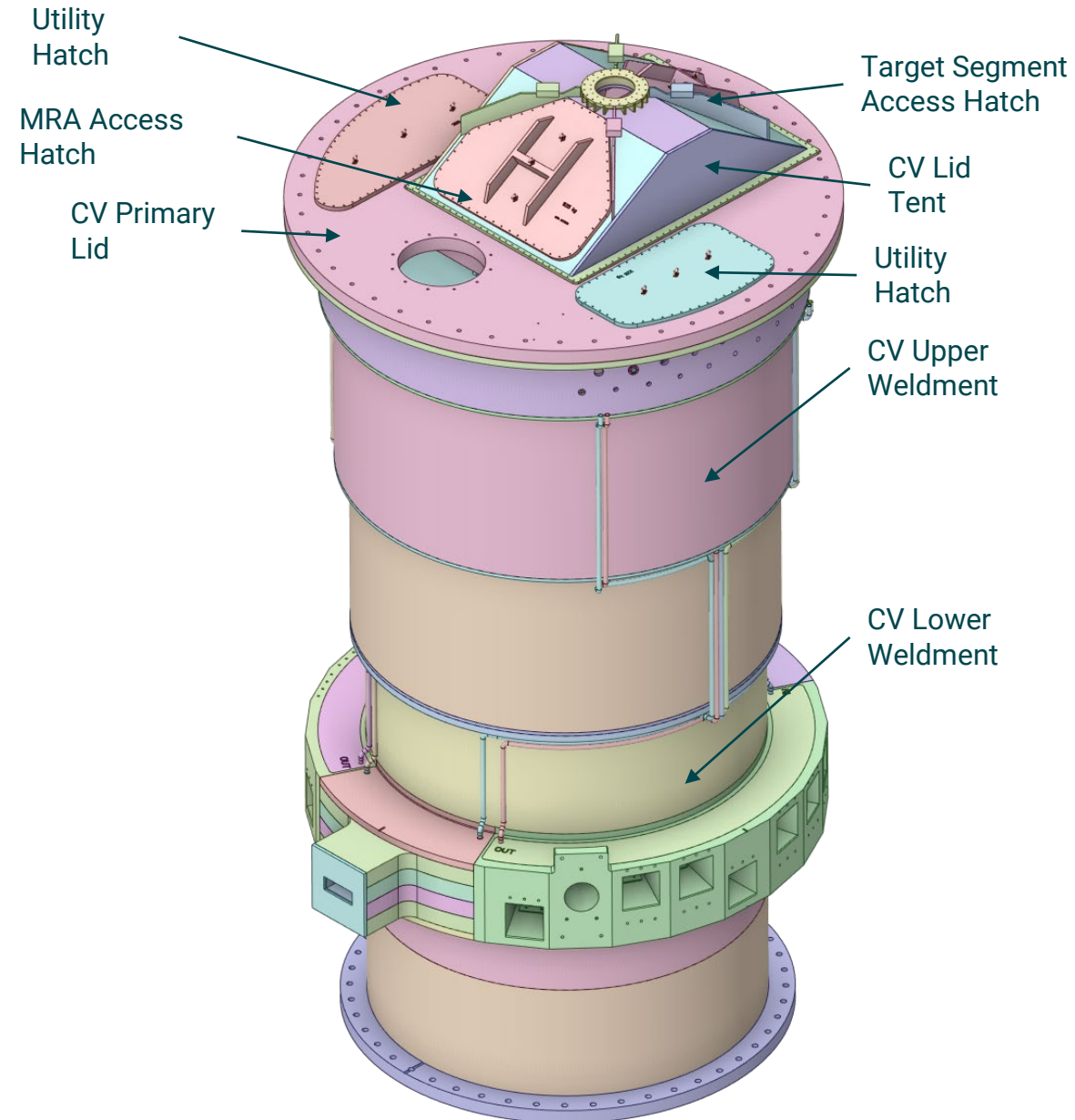
Target Station Shielding



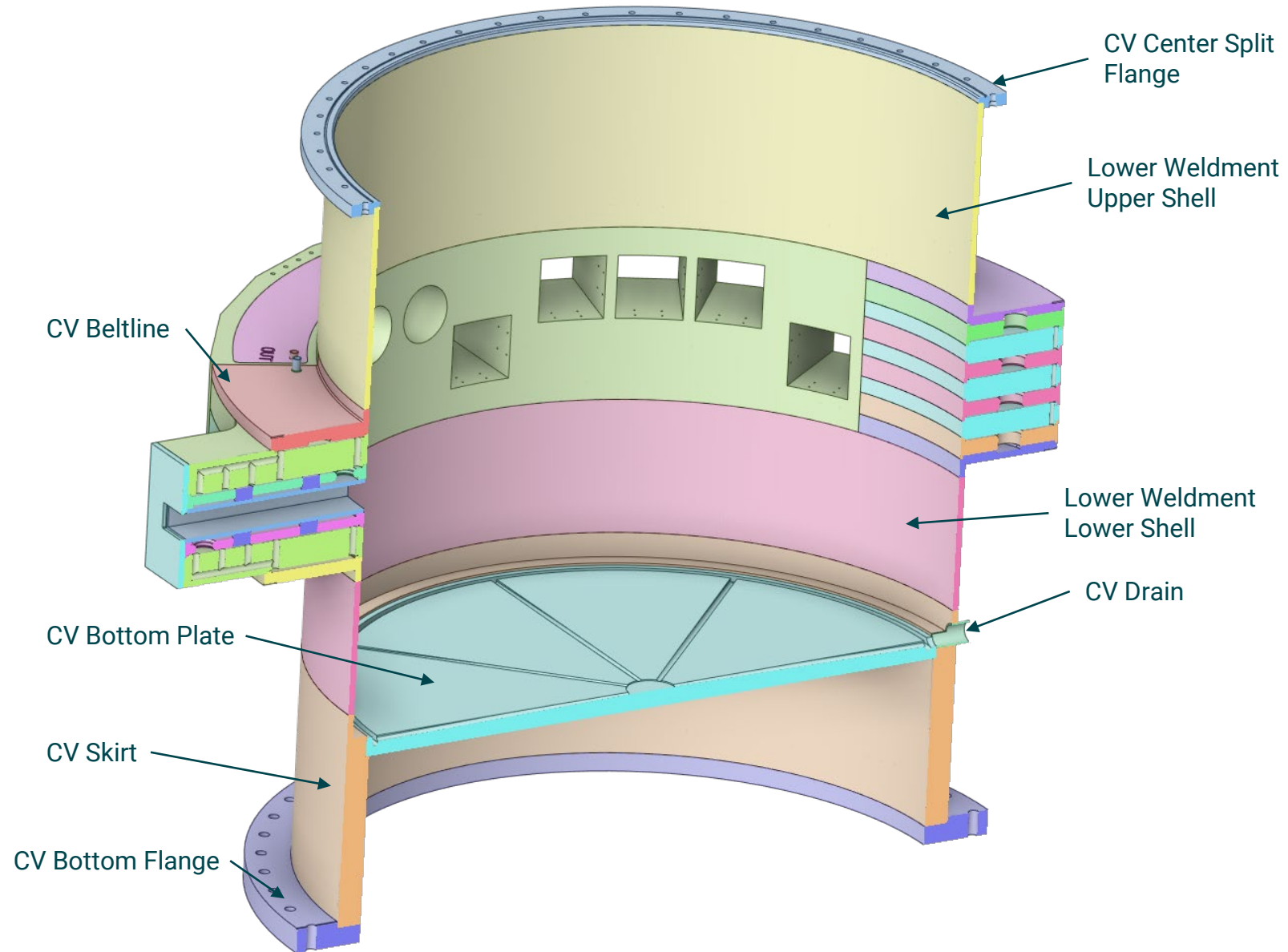
Vessel Systems Scope



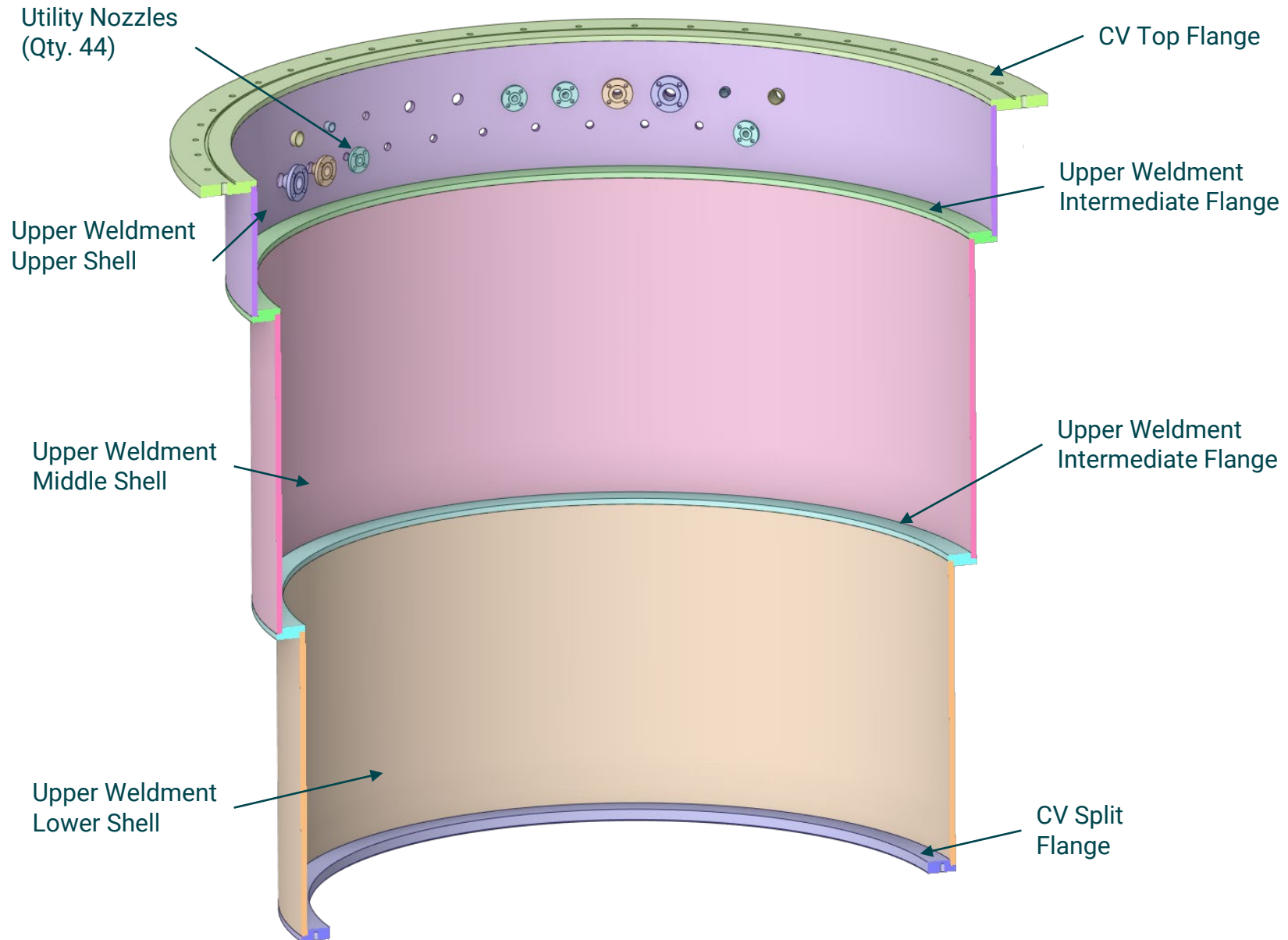
Core Vessel Assembly



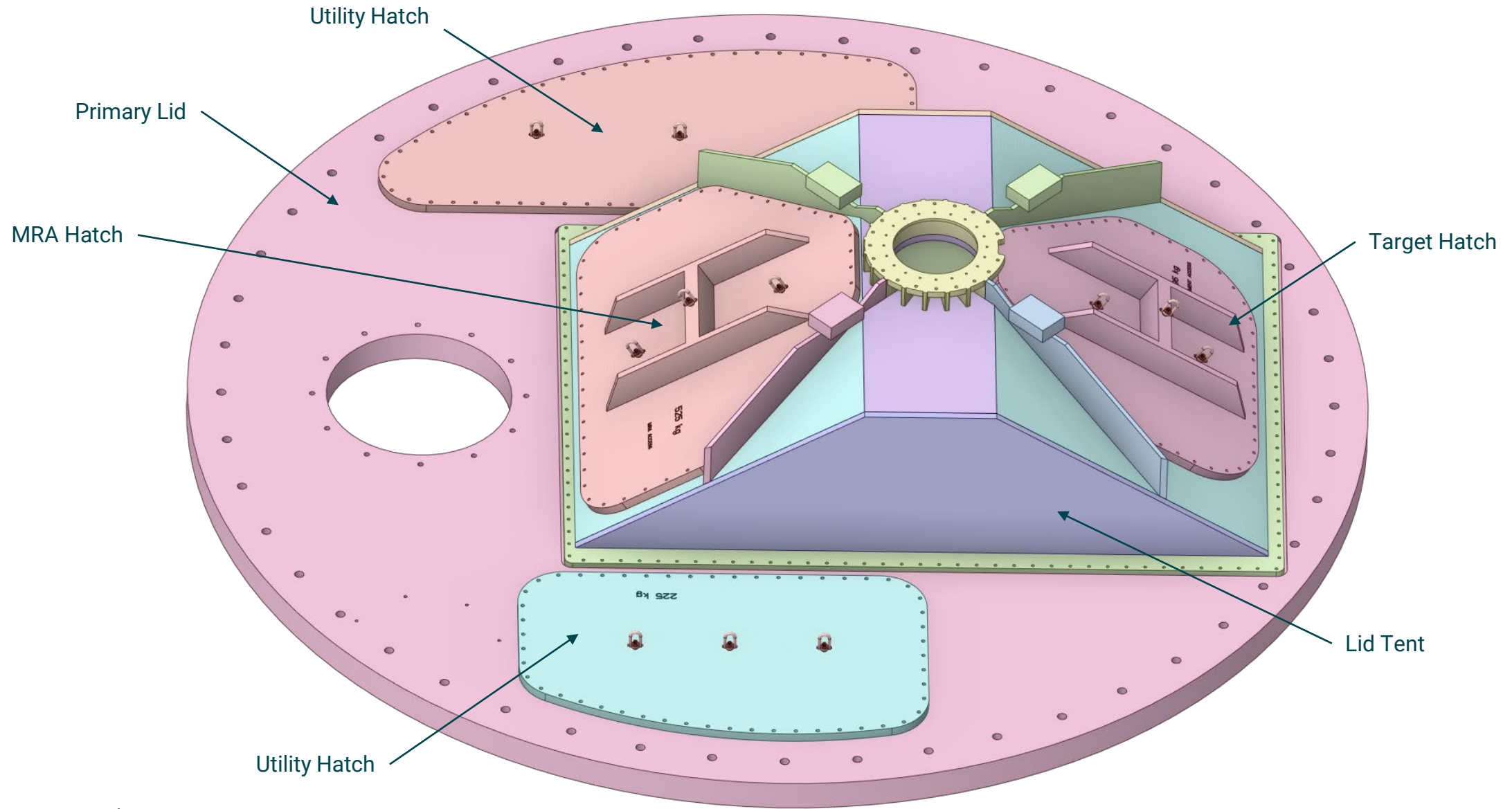
Core Vessel Lower Weldment



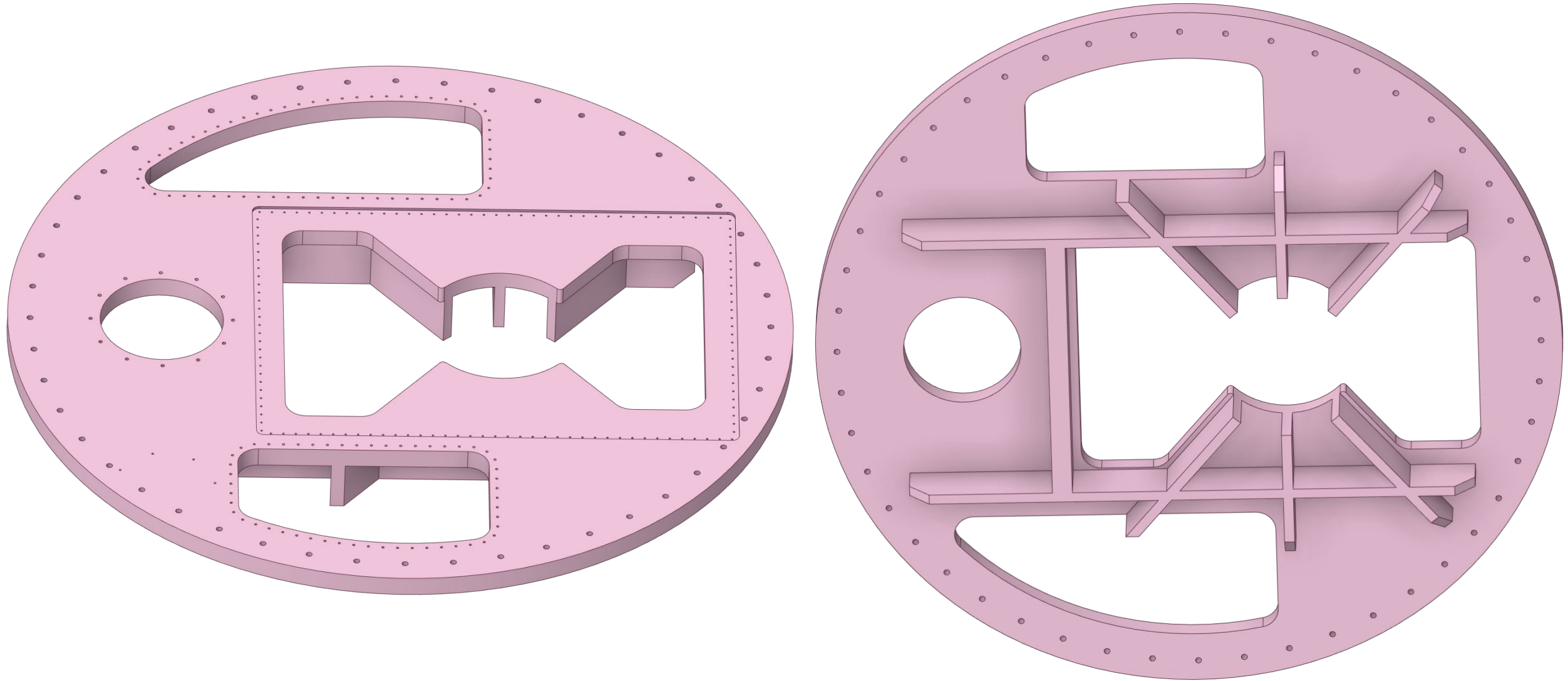
Core Vessel Upper Weldment



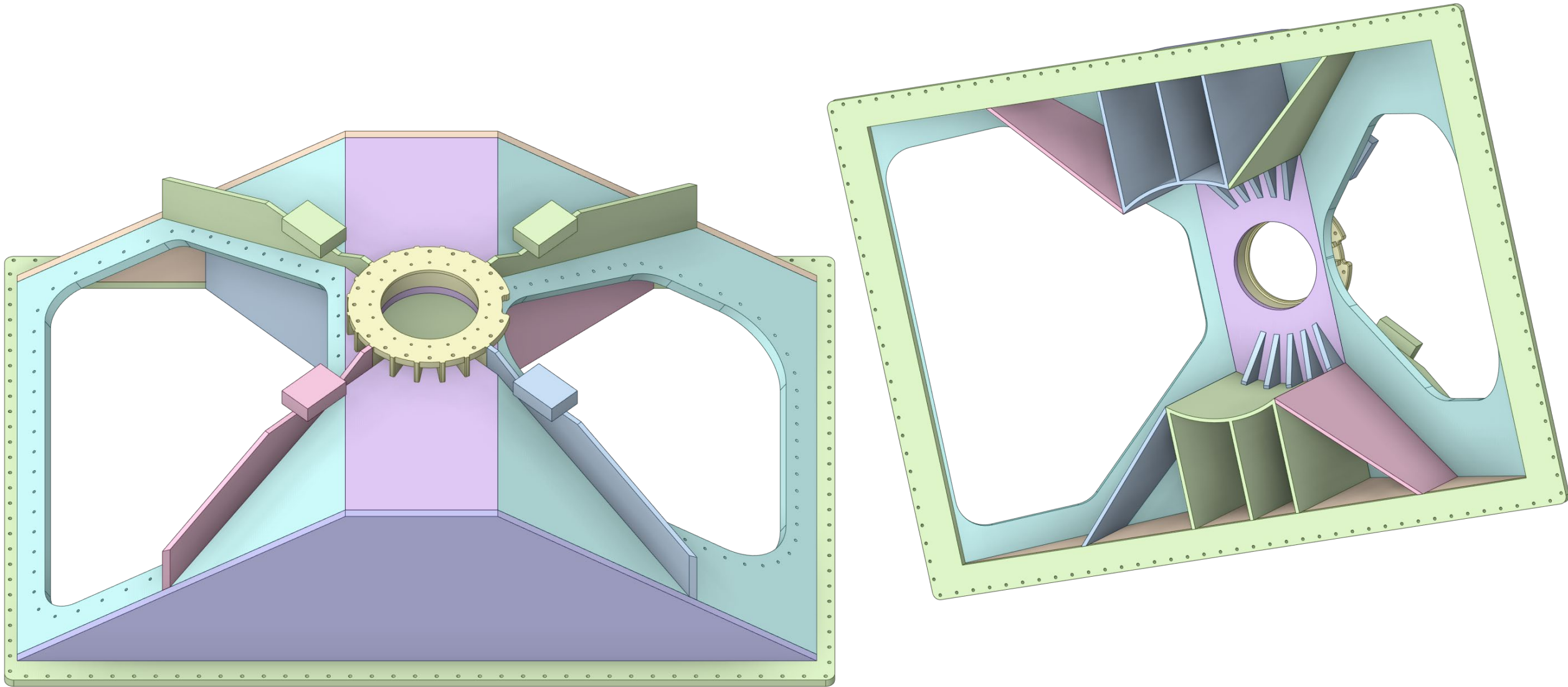
Core Vessel Lid Assembly



Core Vessel Primary Lid

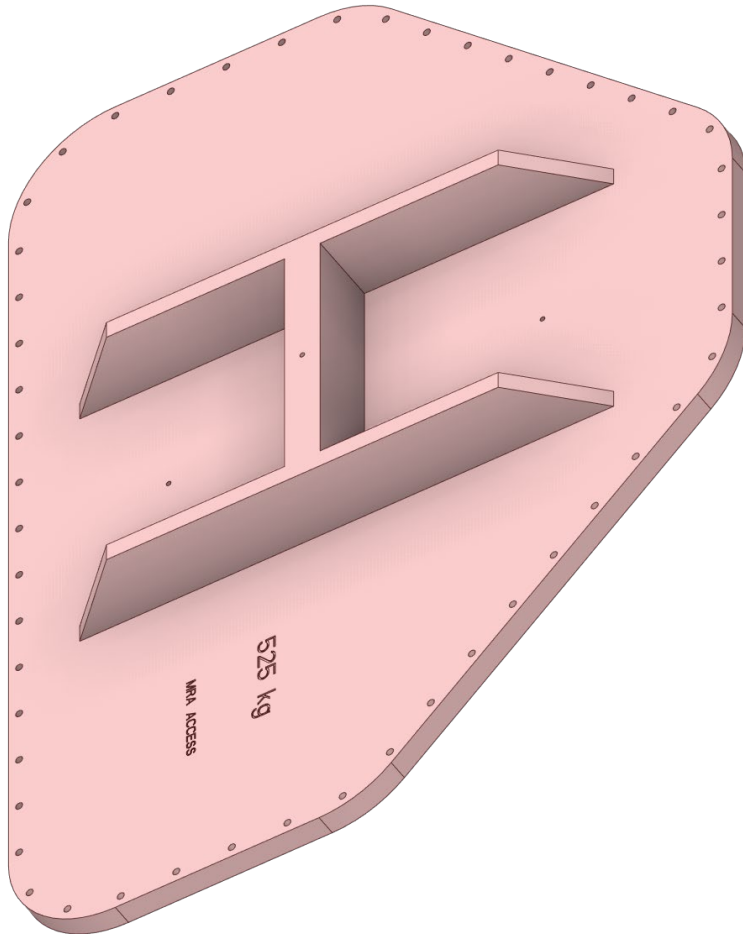


Core Vessel Lid Tent

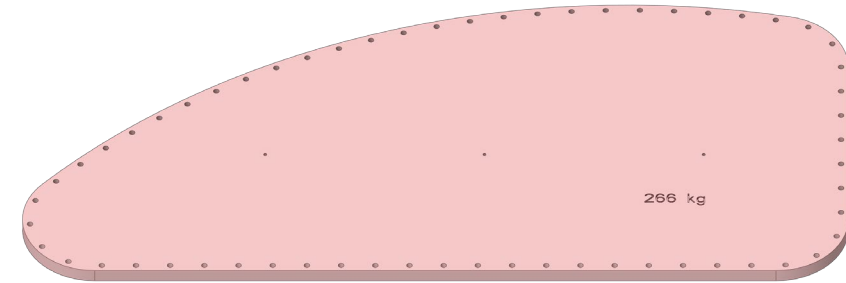
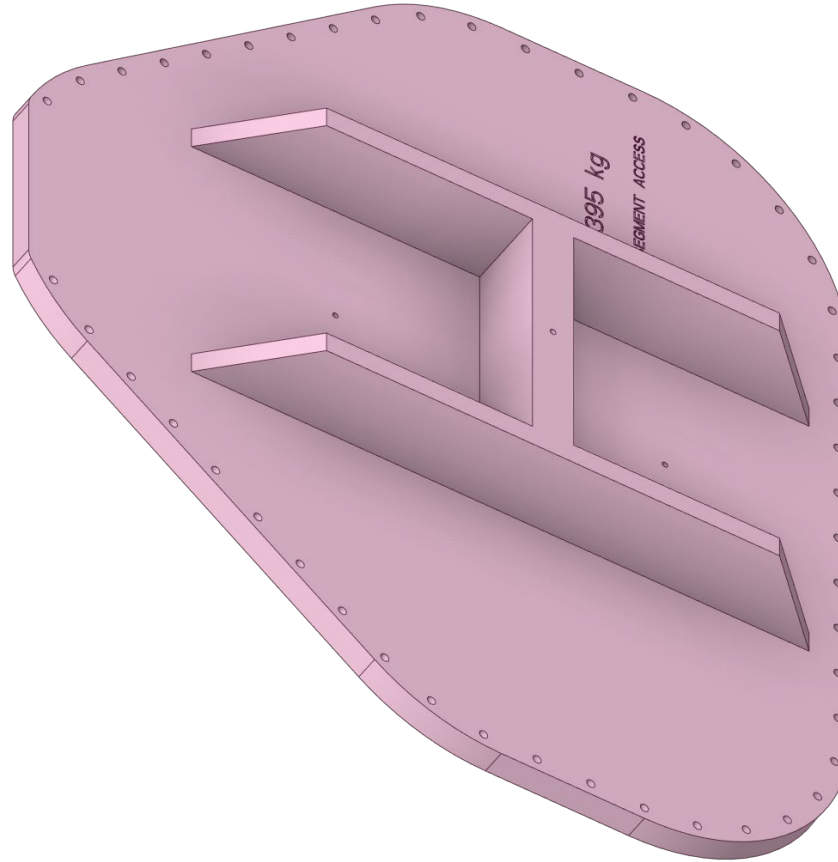


Core Vessel Lid Hatches

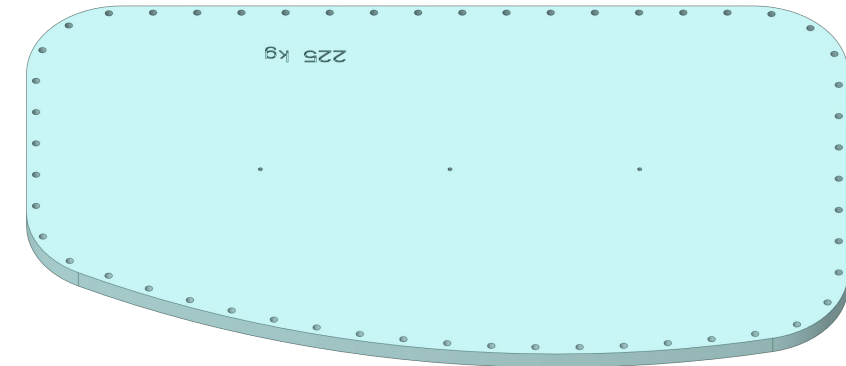
MRA Access Hatch



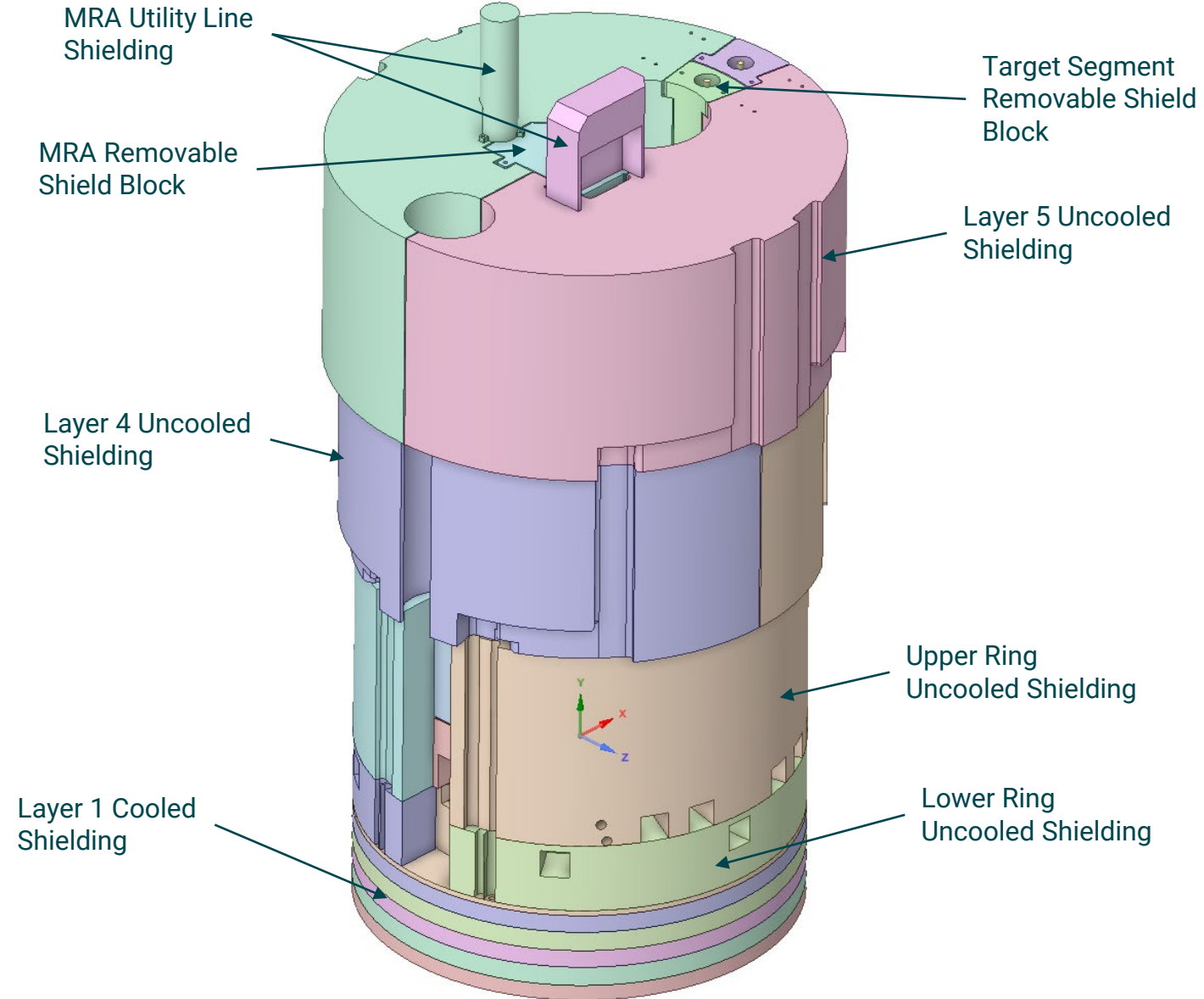
Target Segment Access Hatch



Utility Hatches

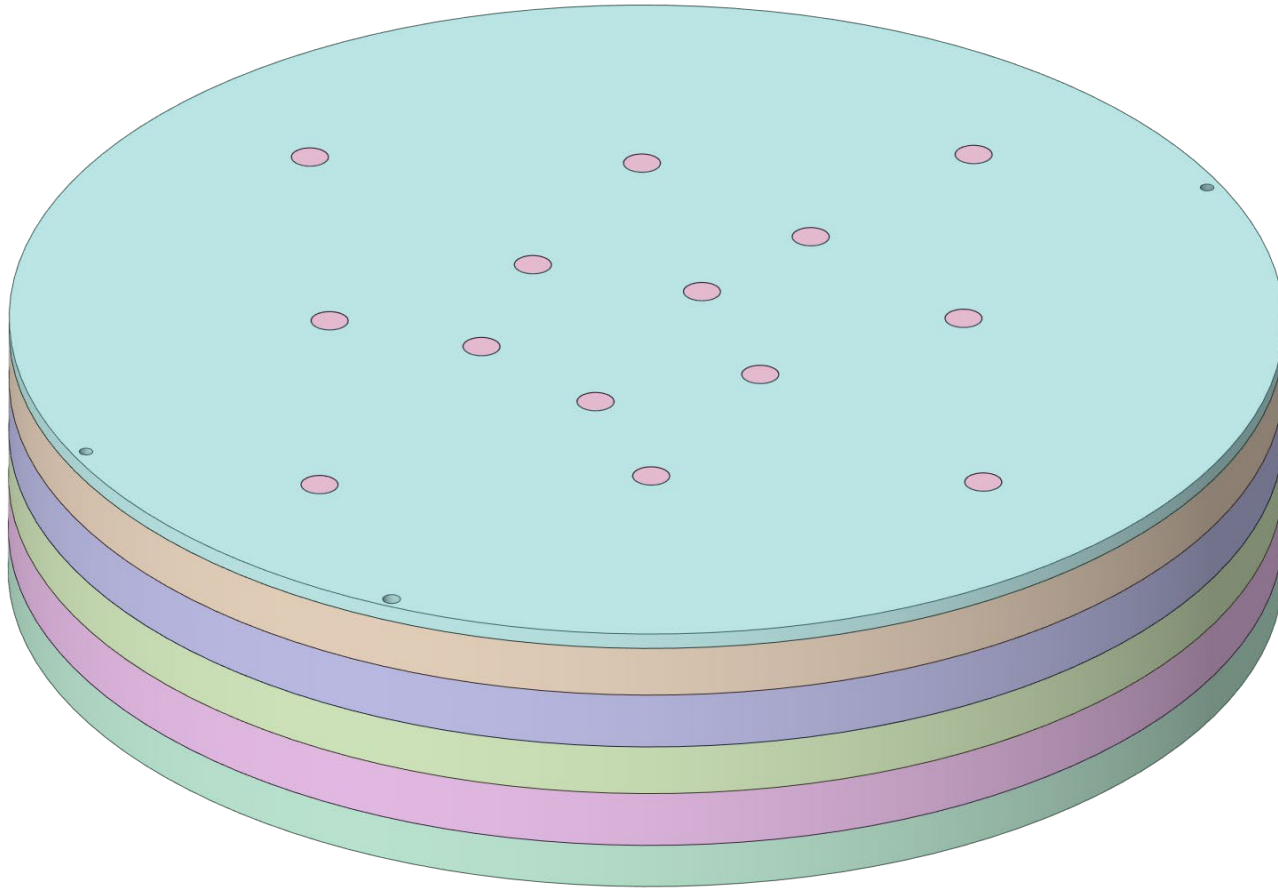


Core Vessel Shielding

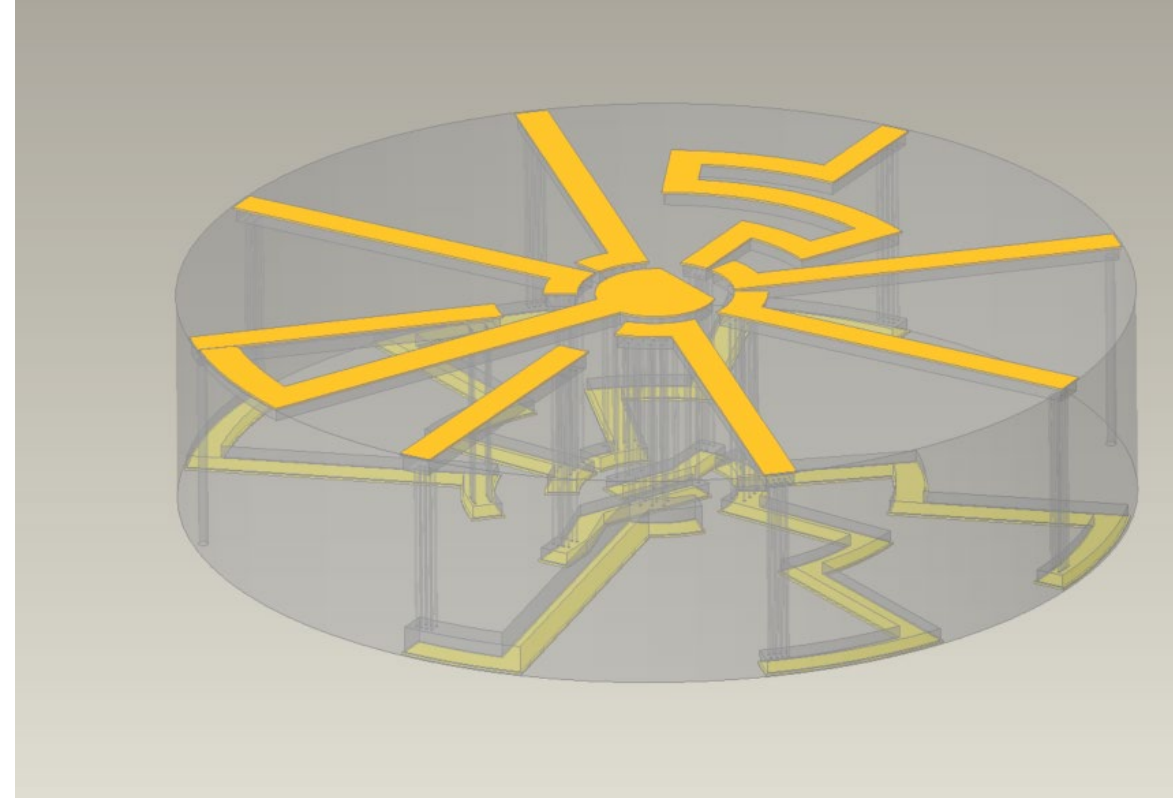


CV Shield Block #1

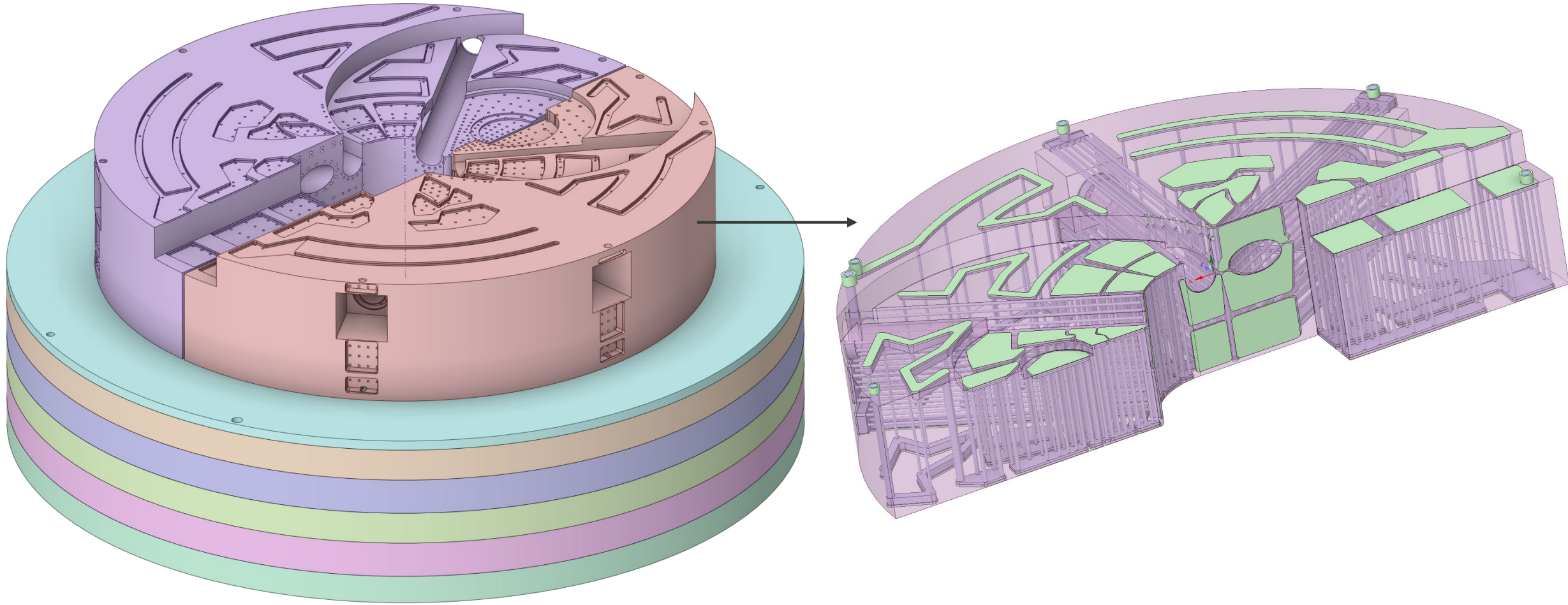
Previous laminated plate design



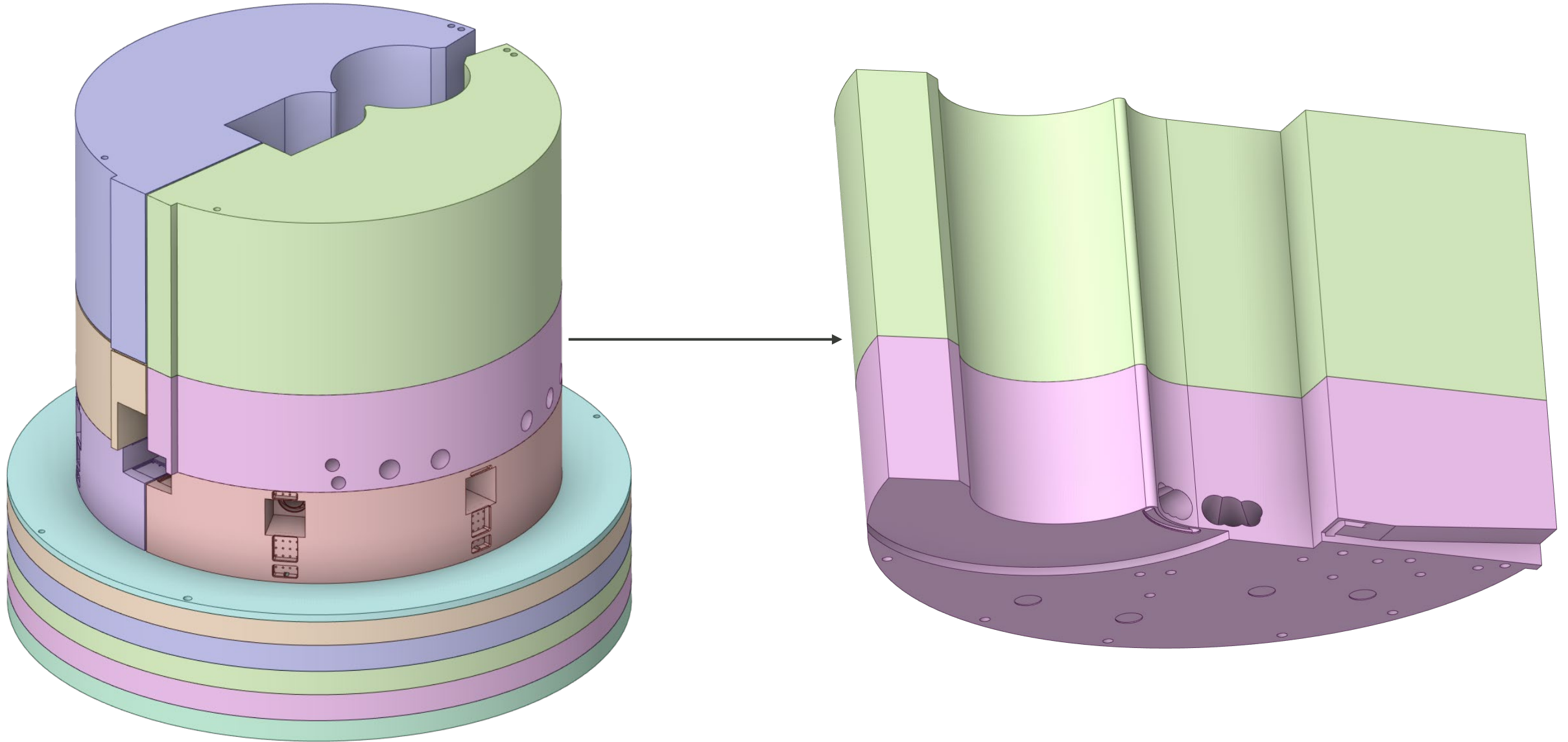
Current gun drilled forged design



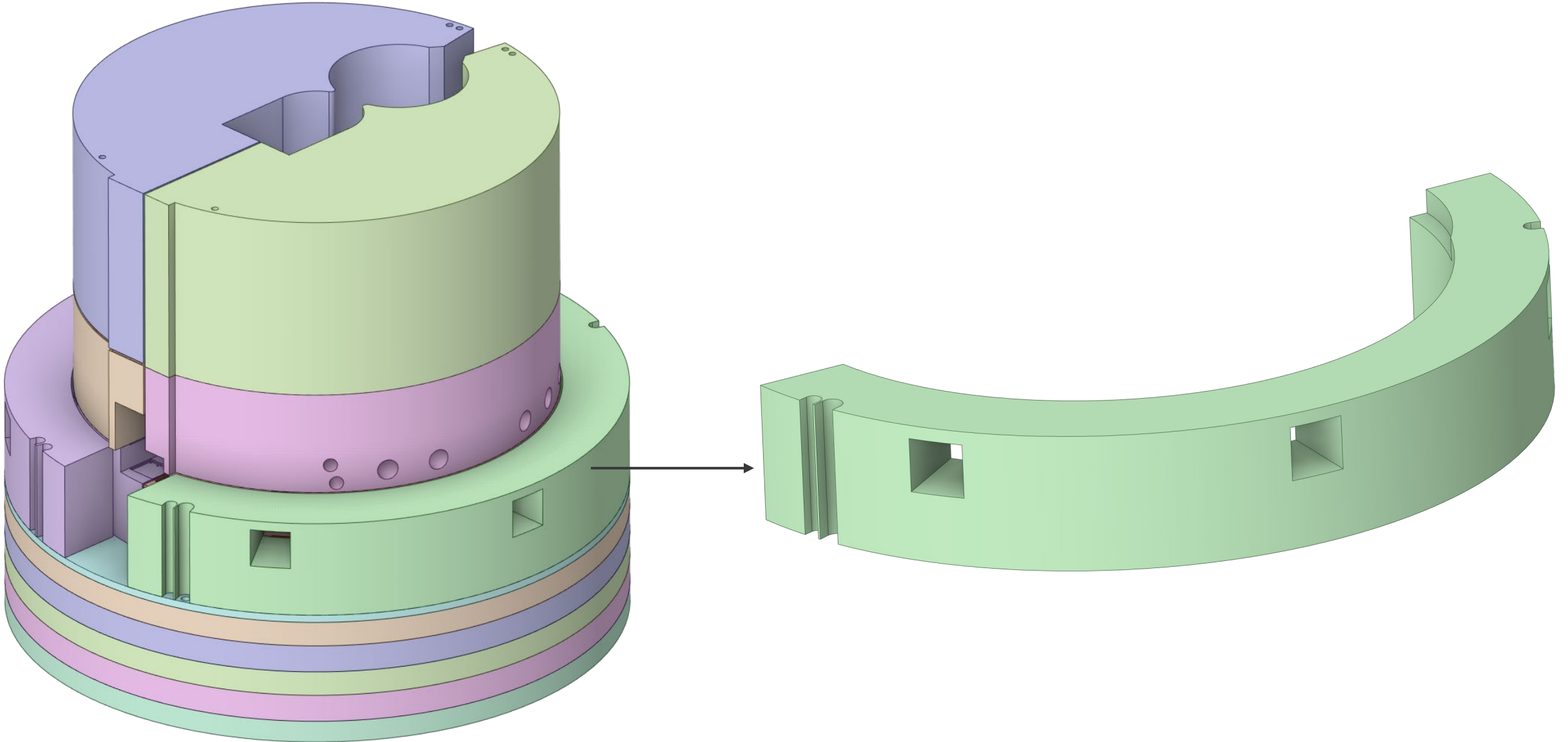
CV Cooled Shield Block Layer 2



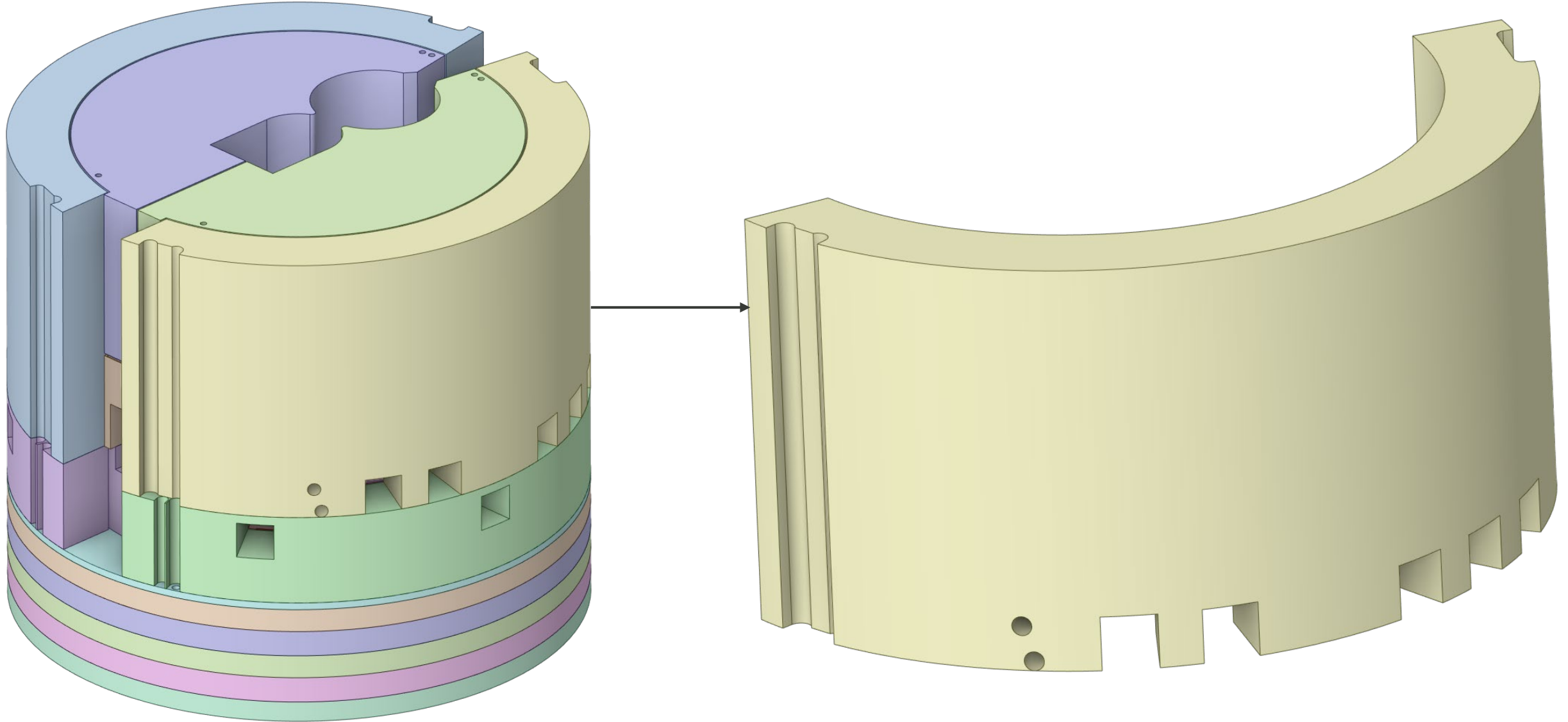
CV Cooled Shield Block Layer 3



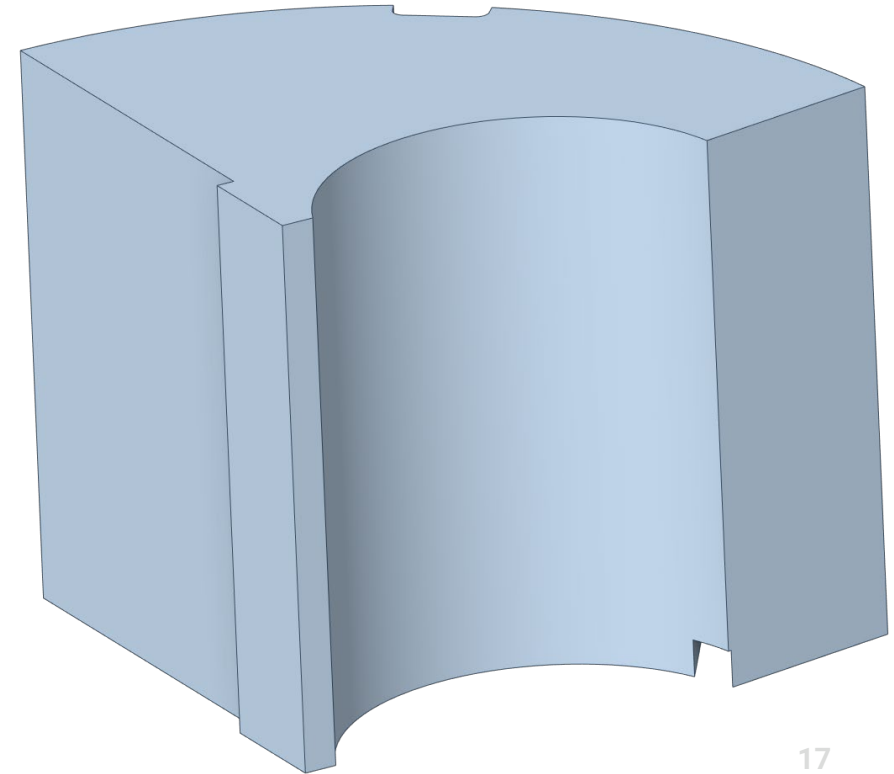
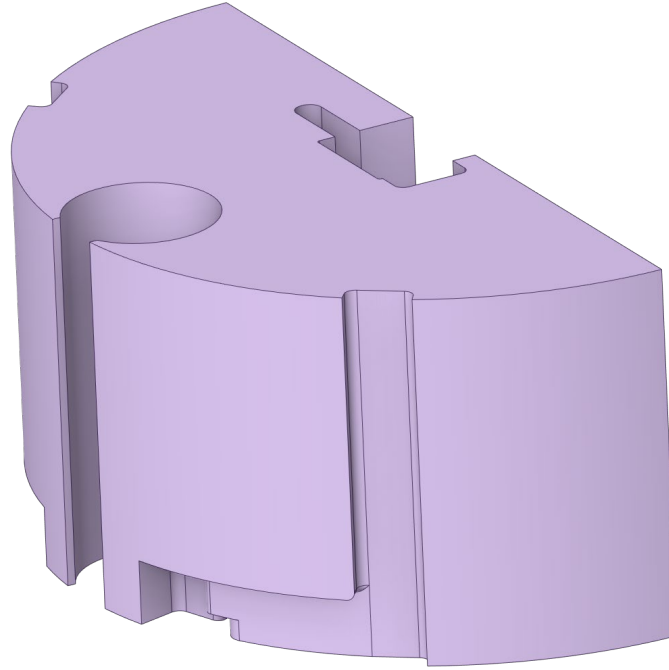
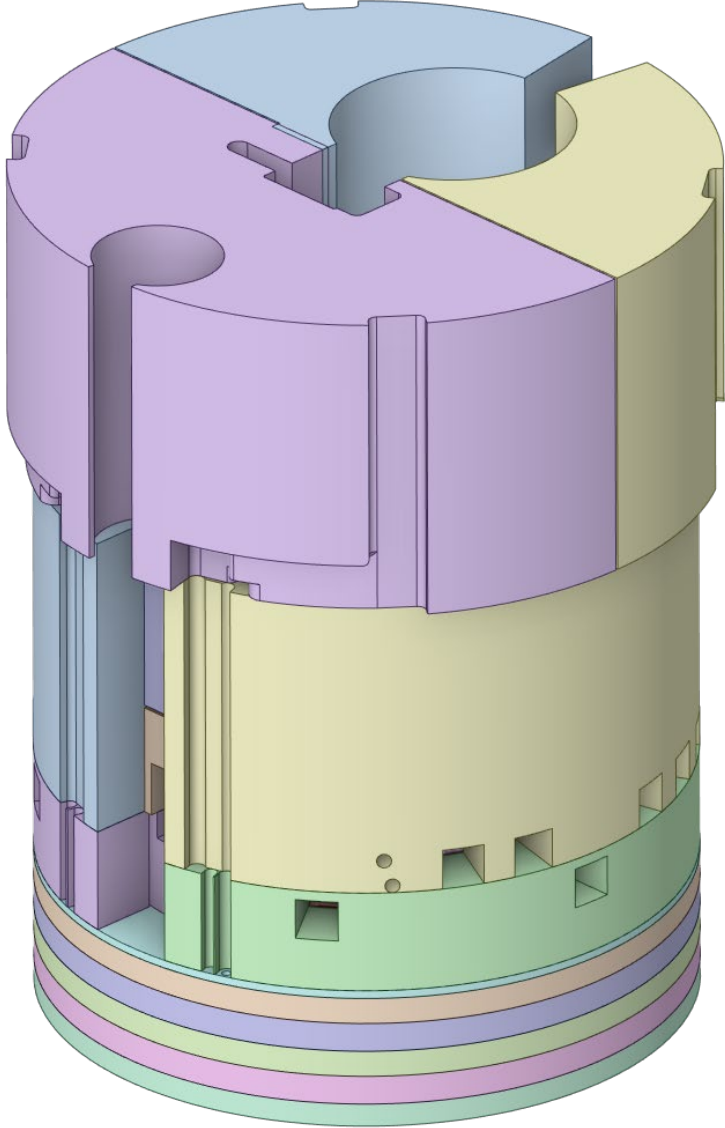
CV Lower Ring Shielding



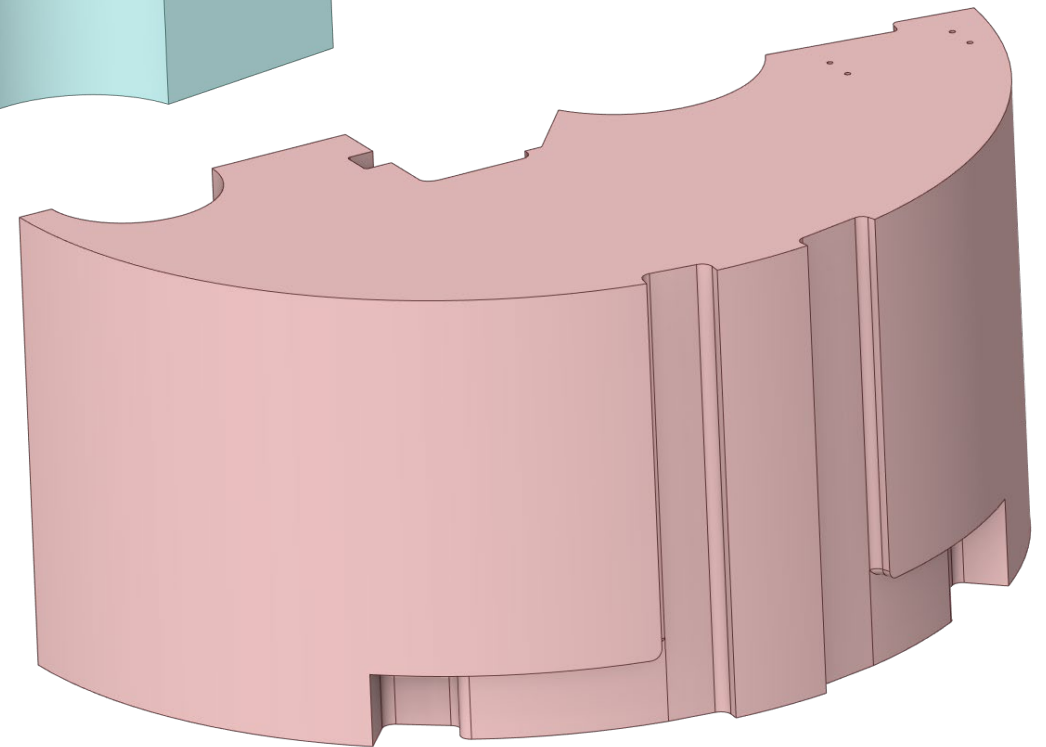
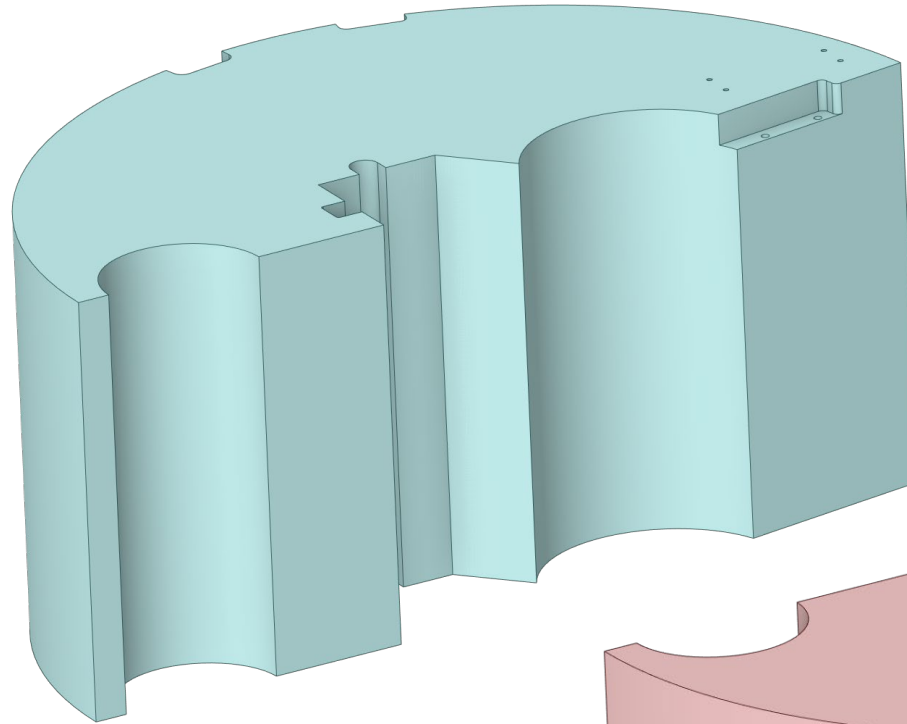
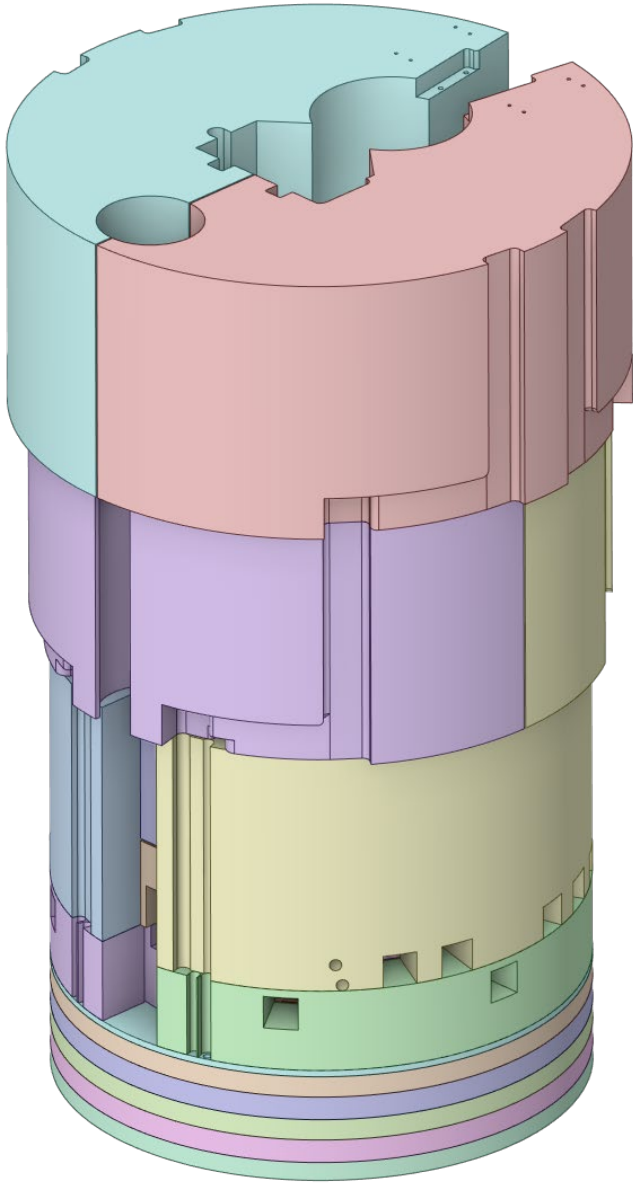
CV Upper Ring Shielding



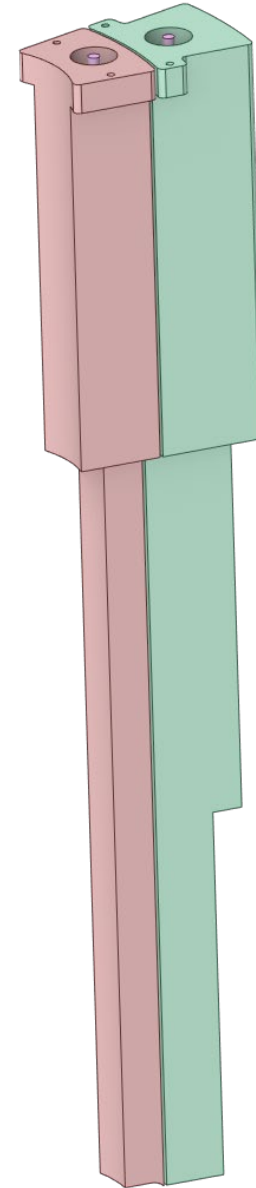
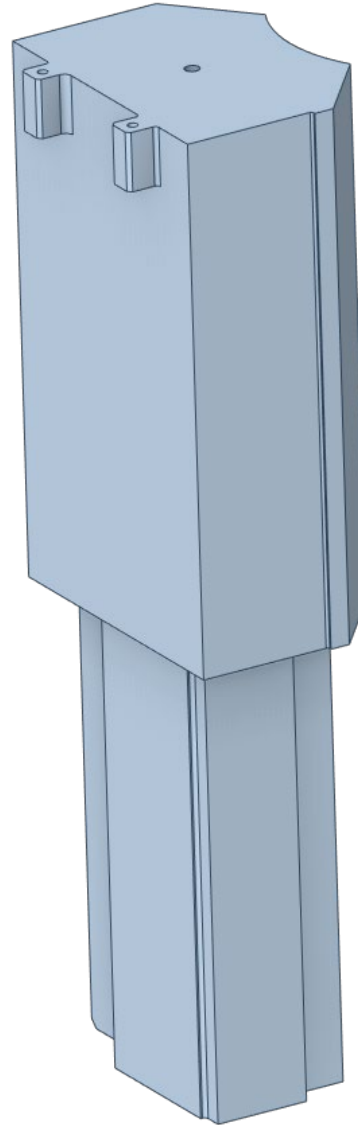
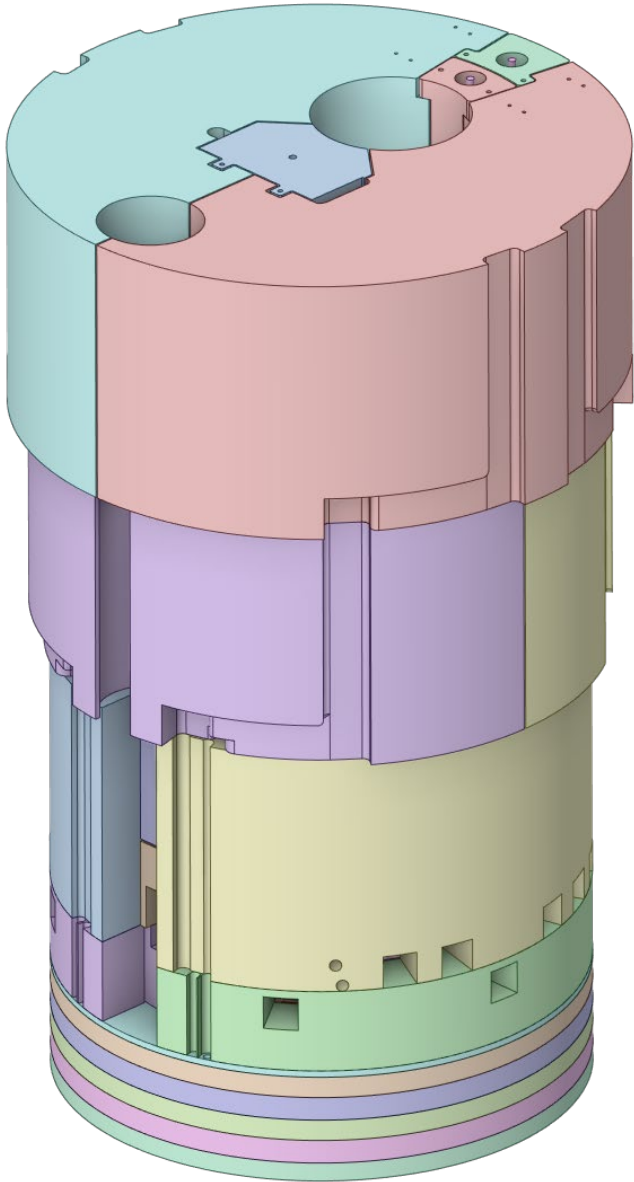
CV Layer 4 Shielding



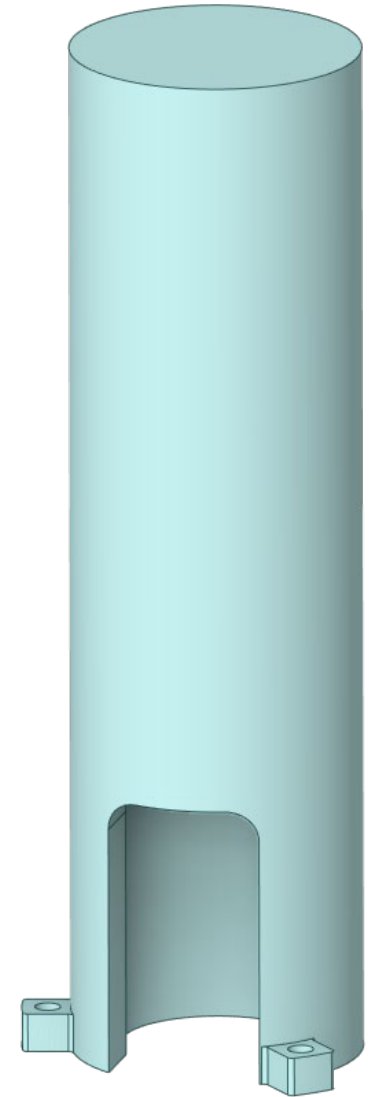
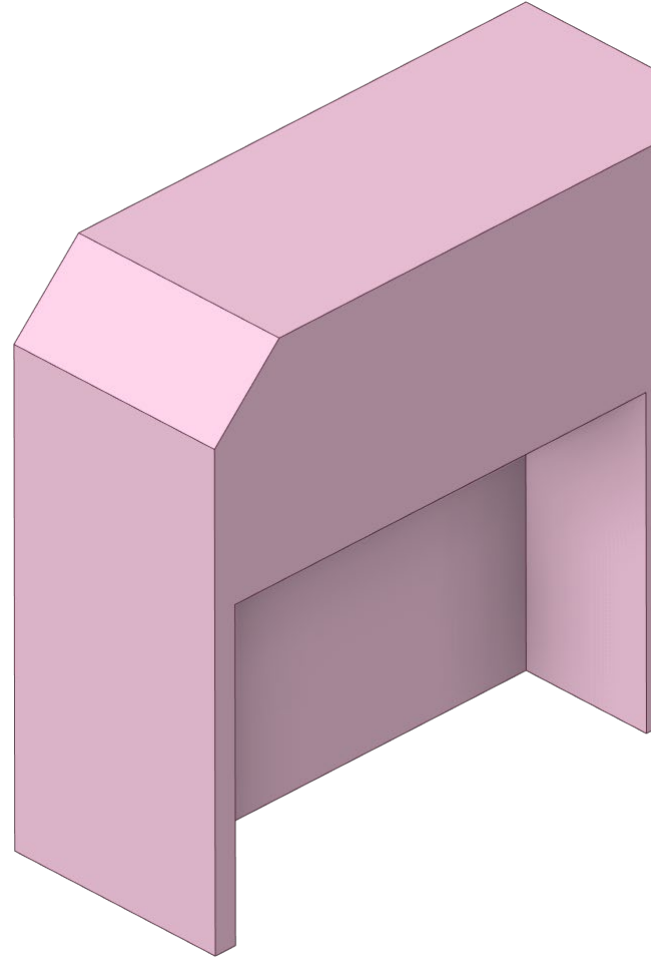
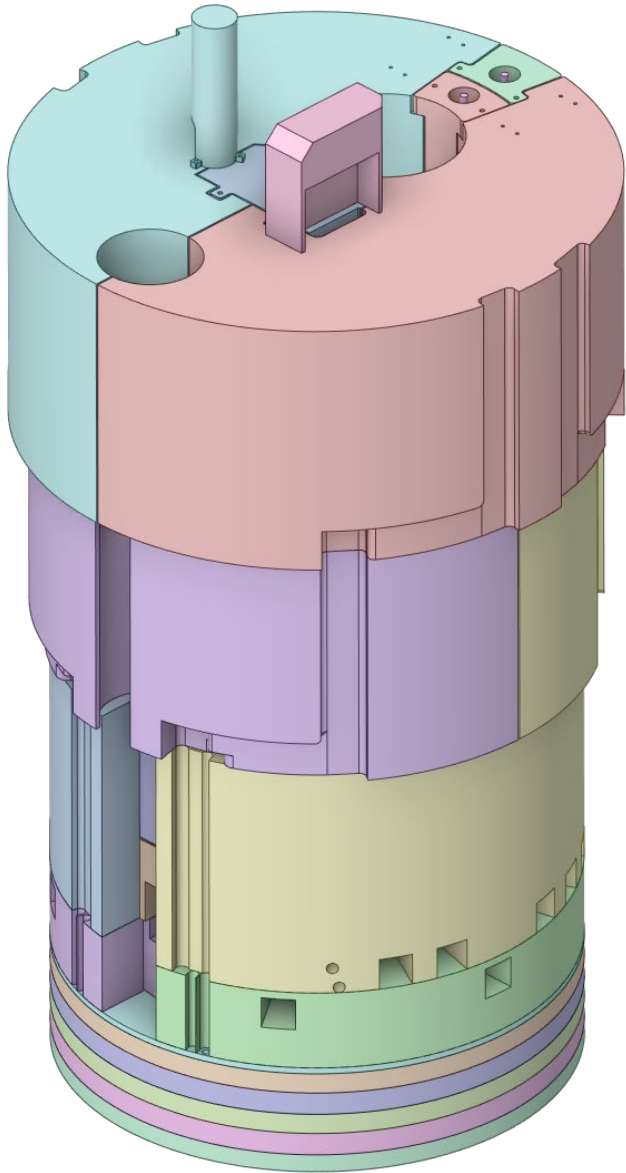
CV Layer 5 Shielding



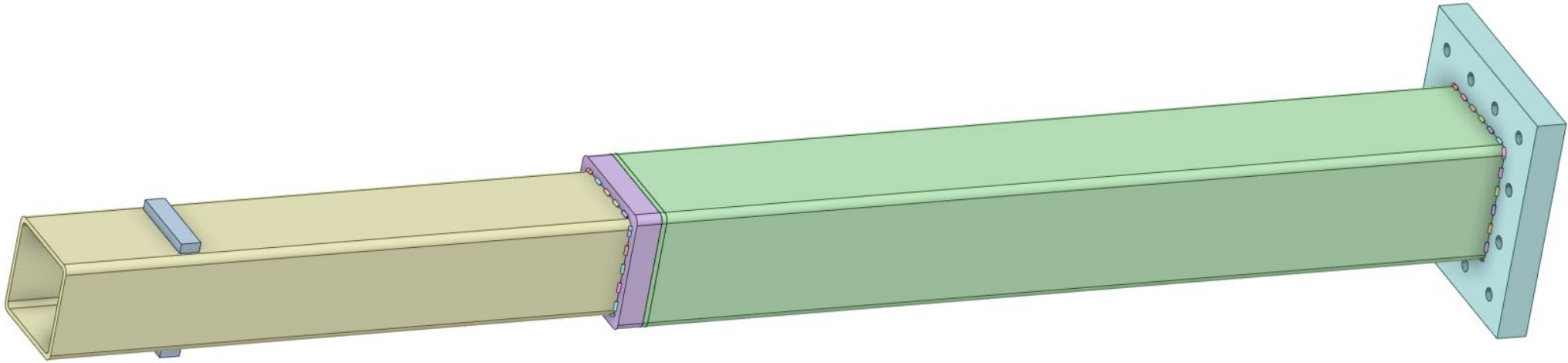
CV Removable Shielding



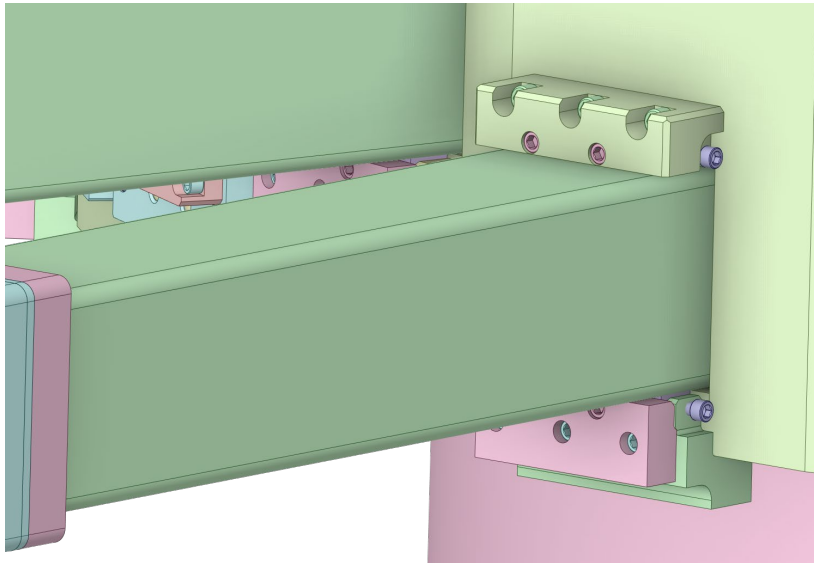
CV MRA Utility Shielding



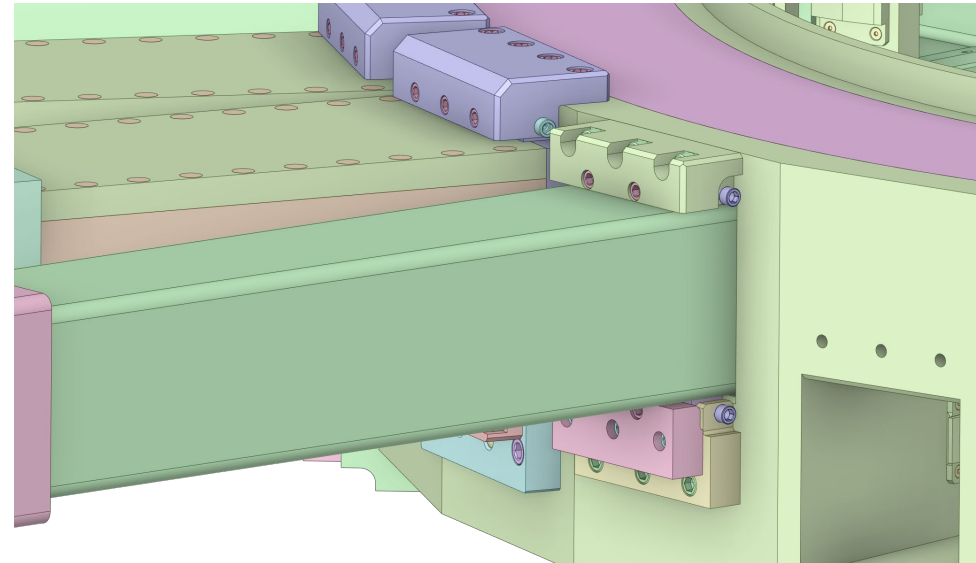
Standard Nozzle Extension Assembly



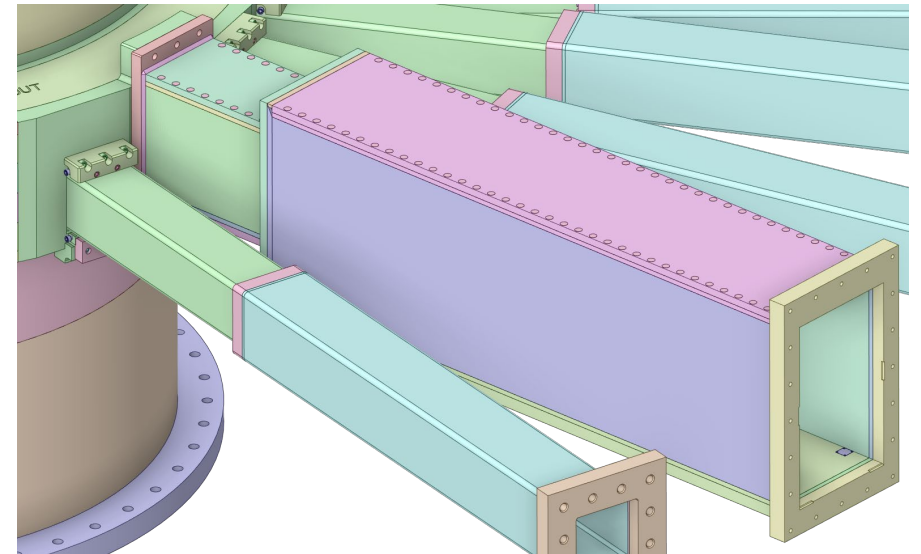
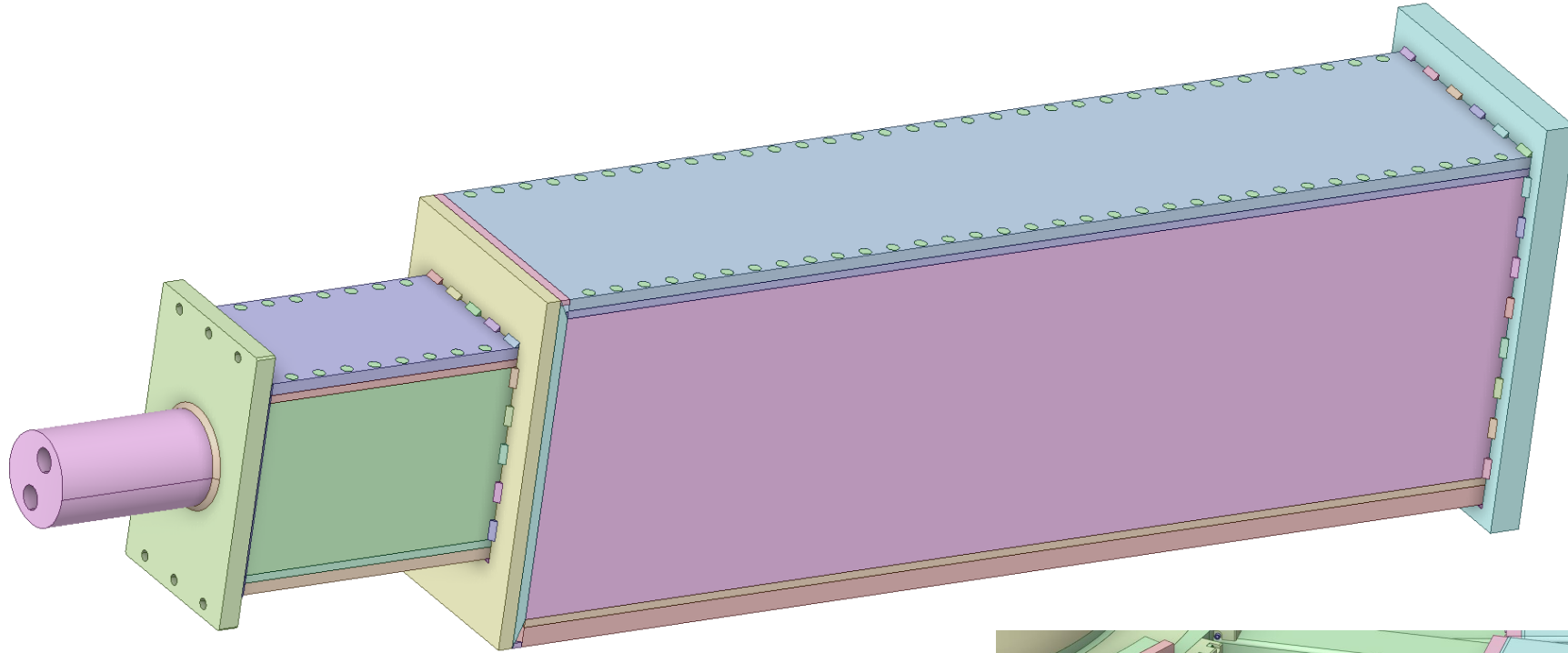
Lower Bracket Assembly



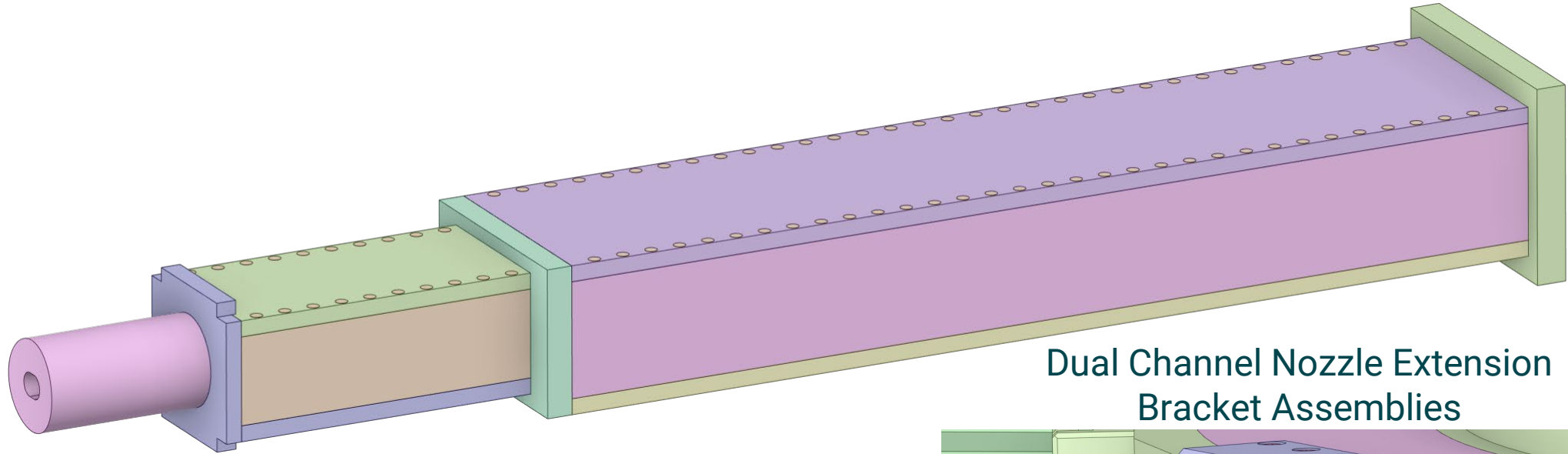
Upper Bracket Assembly



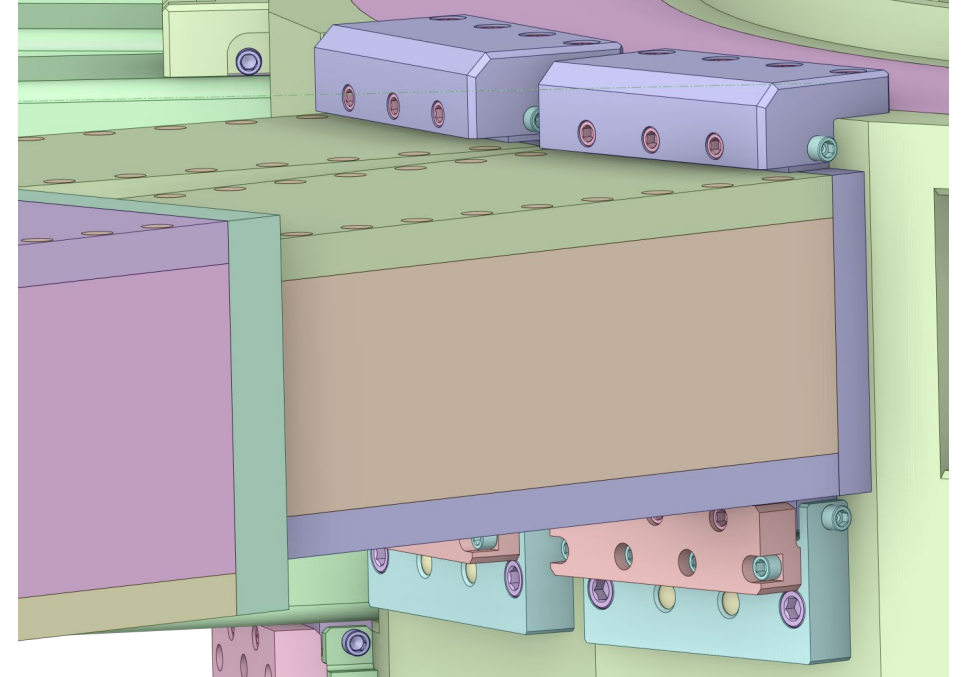
QIKR Nozzle Extension Assembly



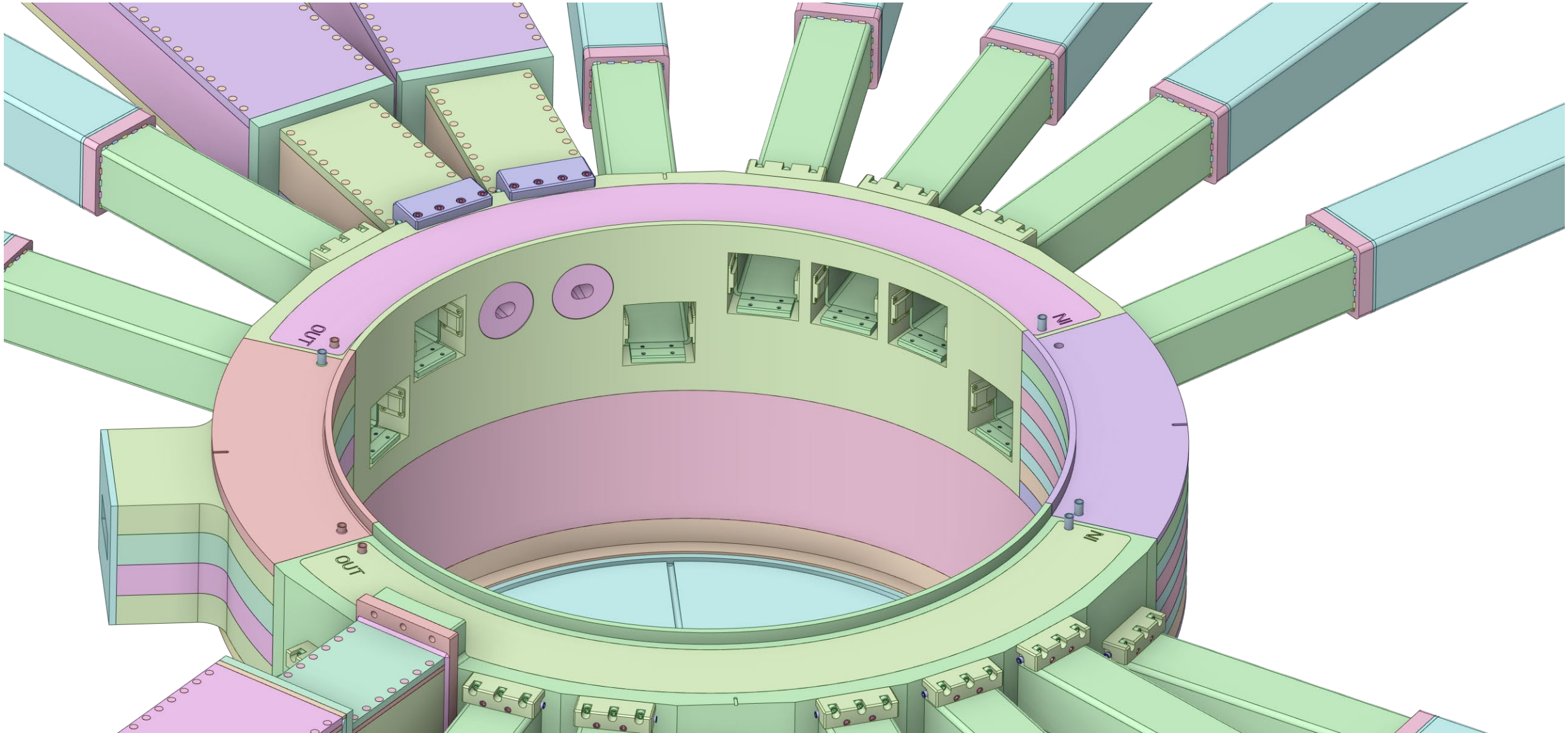
Dual Channel Nozzle Extension Assembly



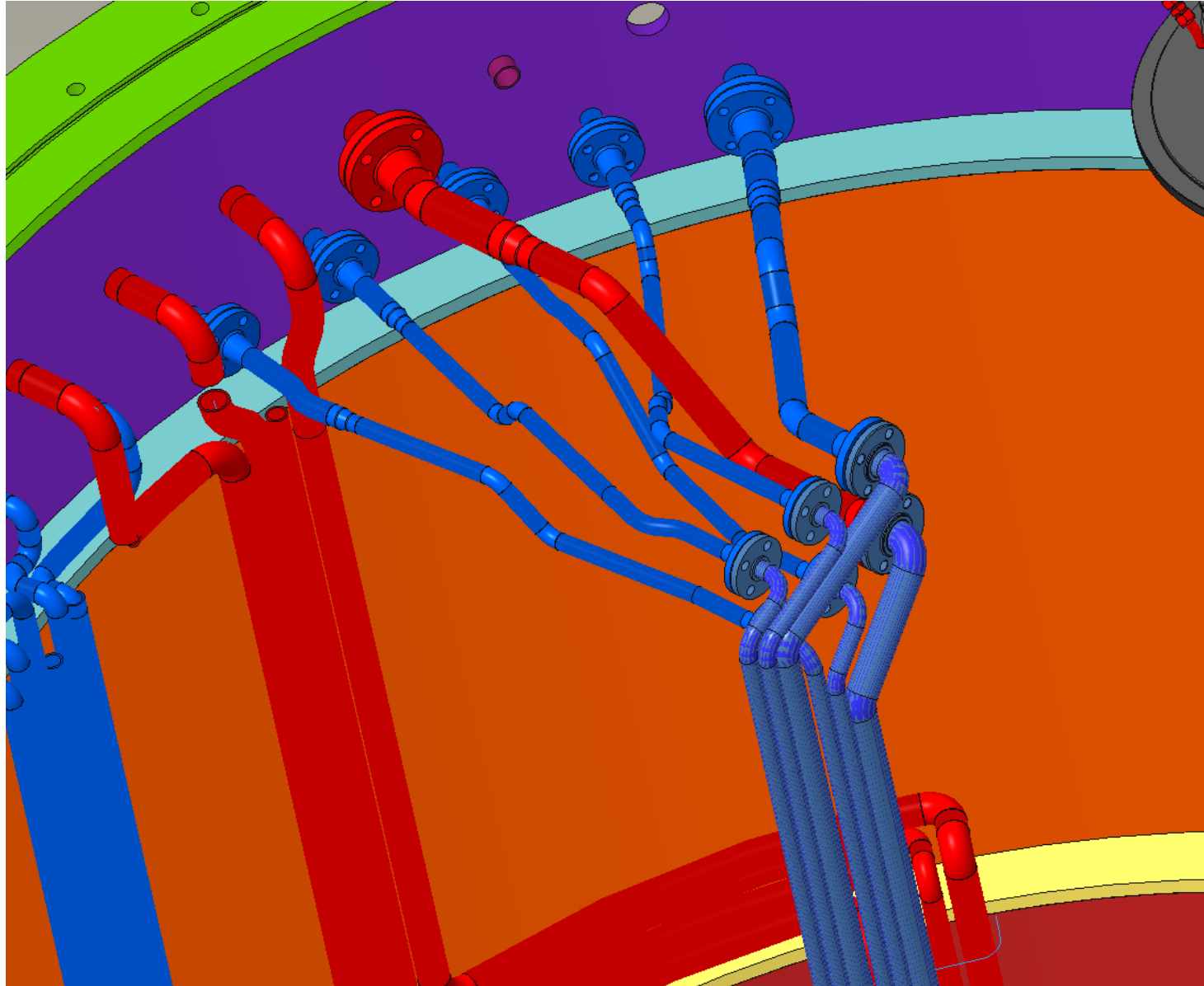
Dual Channel Nozzle Extension
Bracket Assemblies



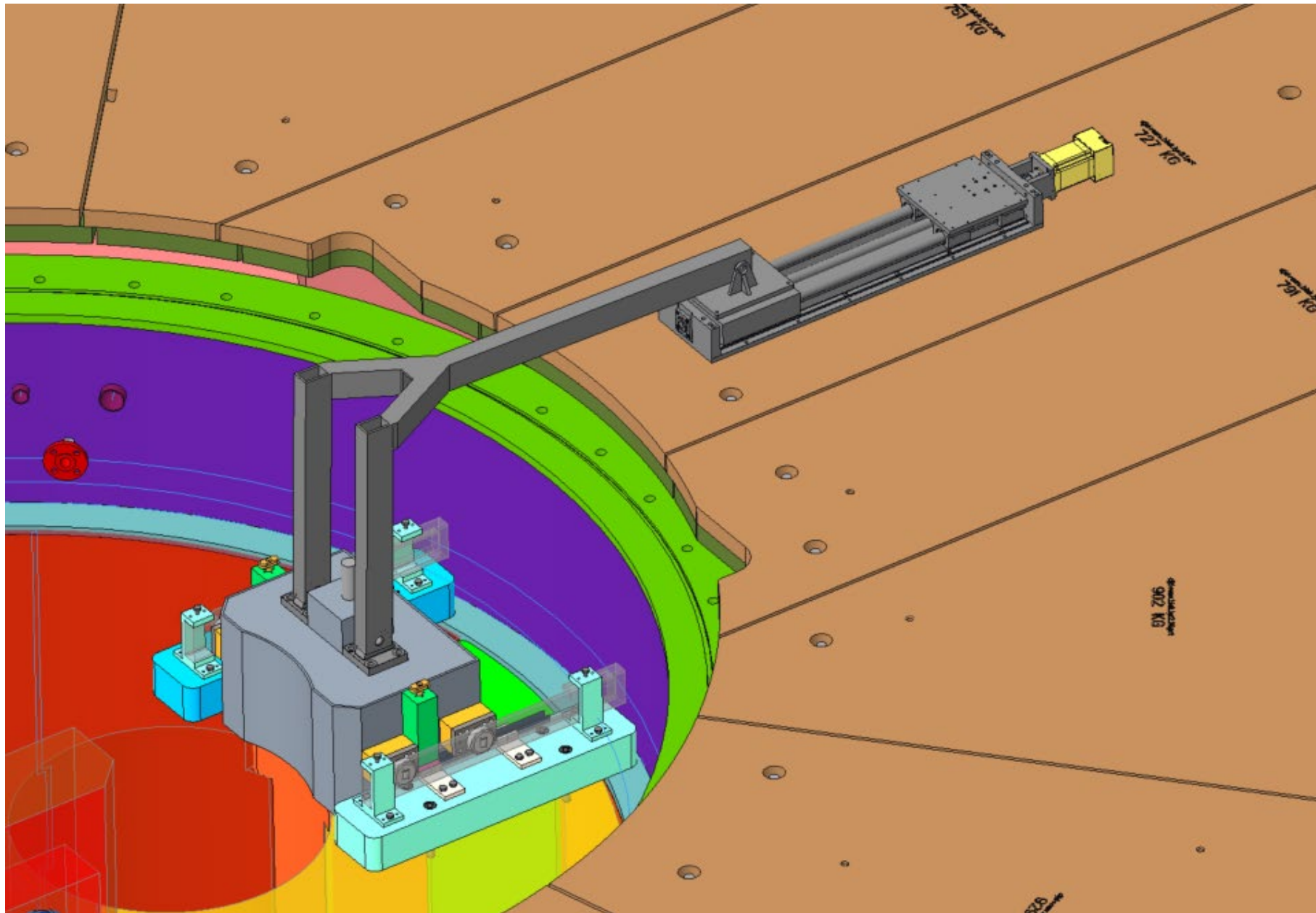
Monolith Insert Landing Pads



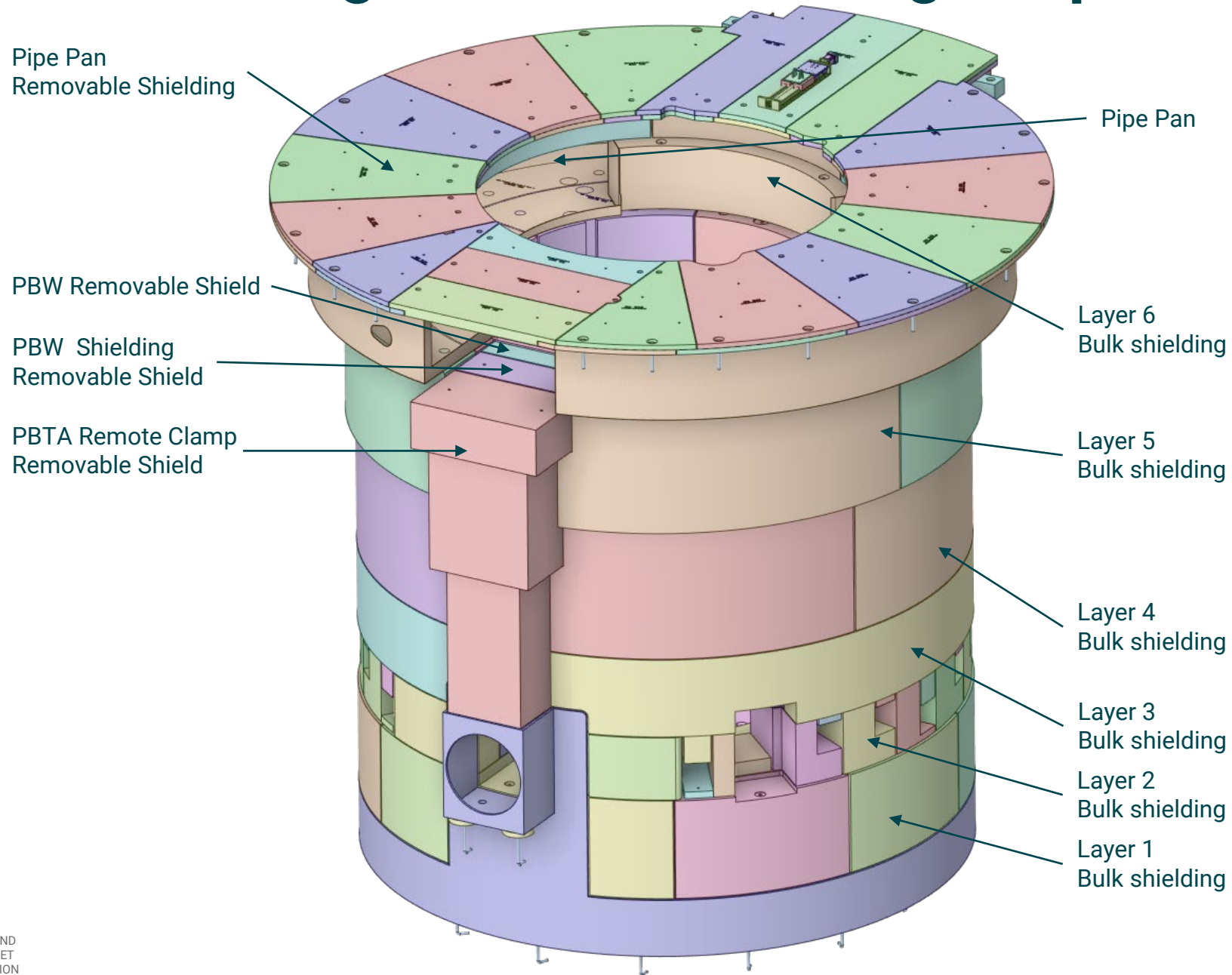
MRA Utility Jumpers



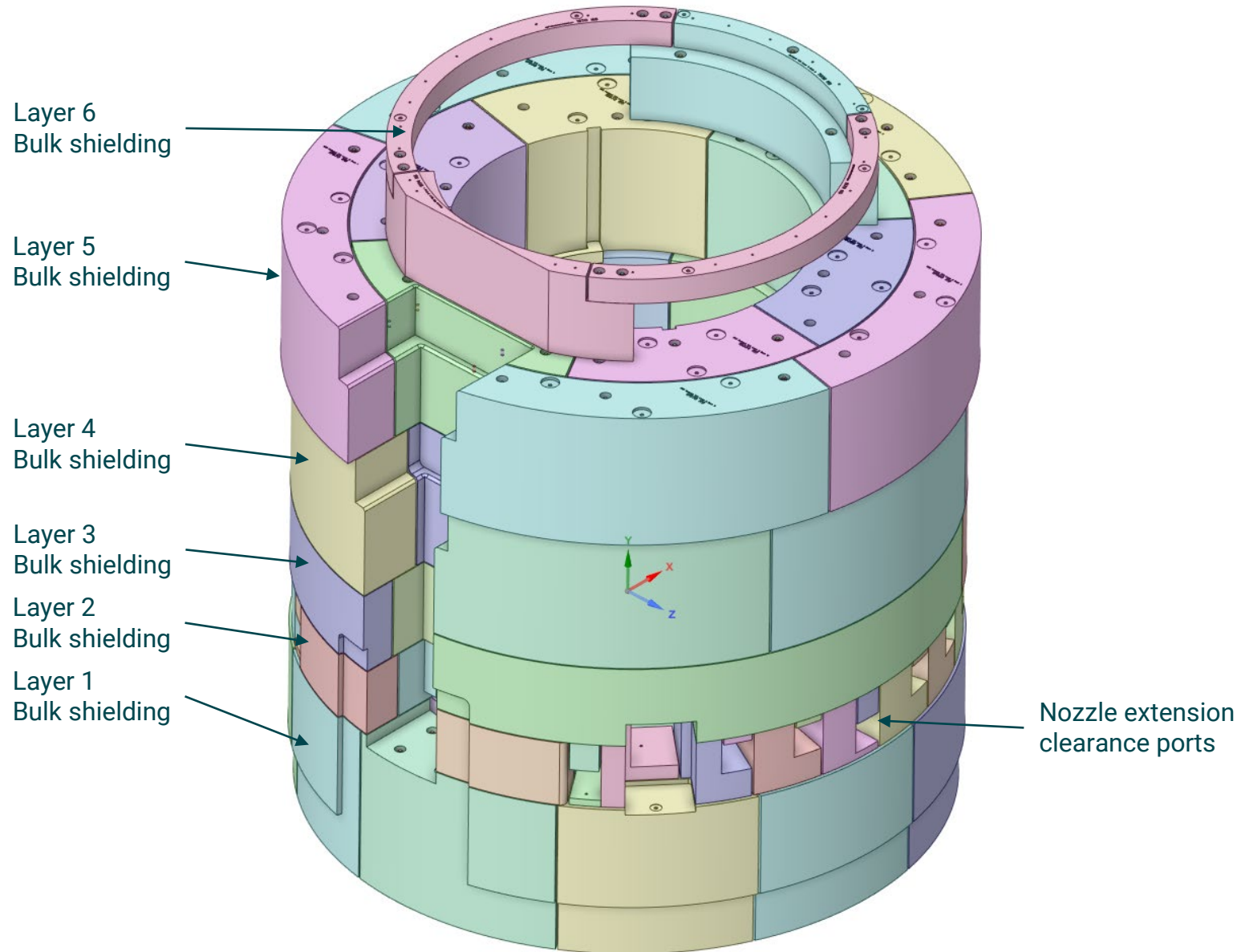
Gamma Gate Assembly



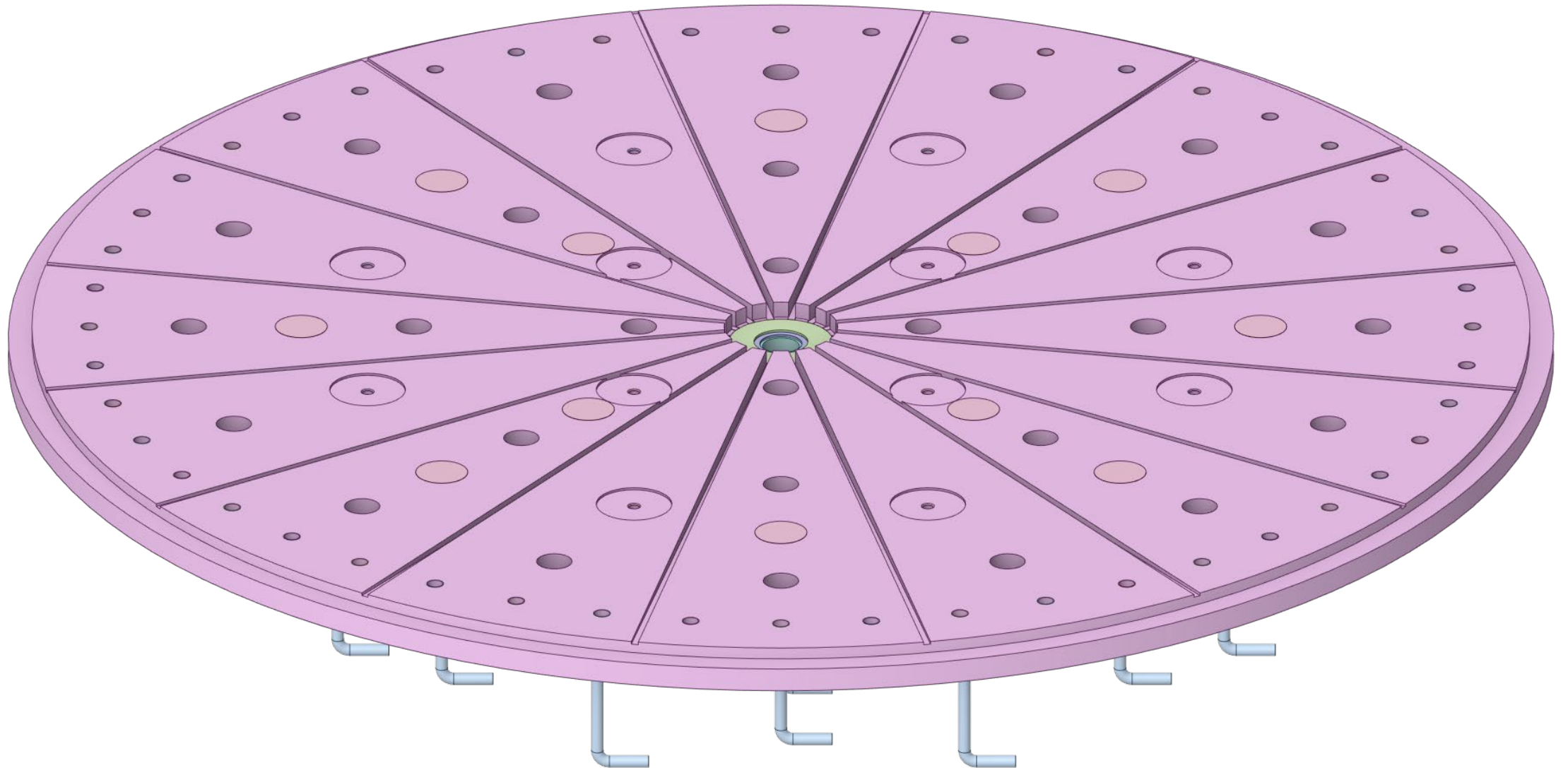
Target Station Shielding Scope



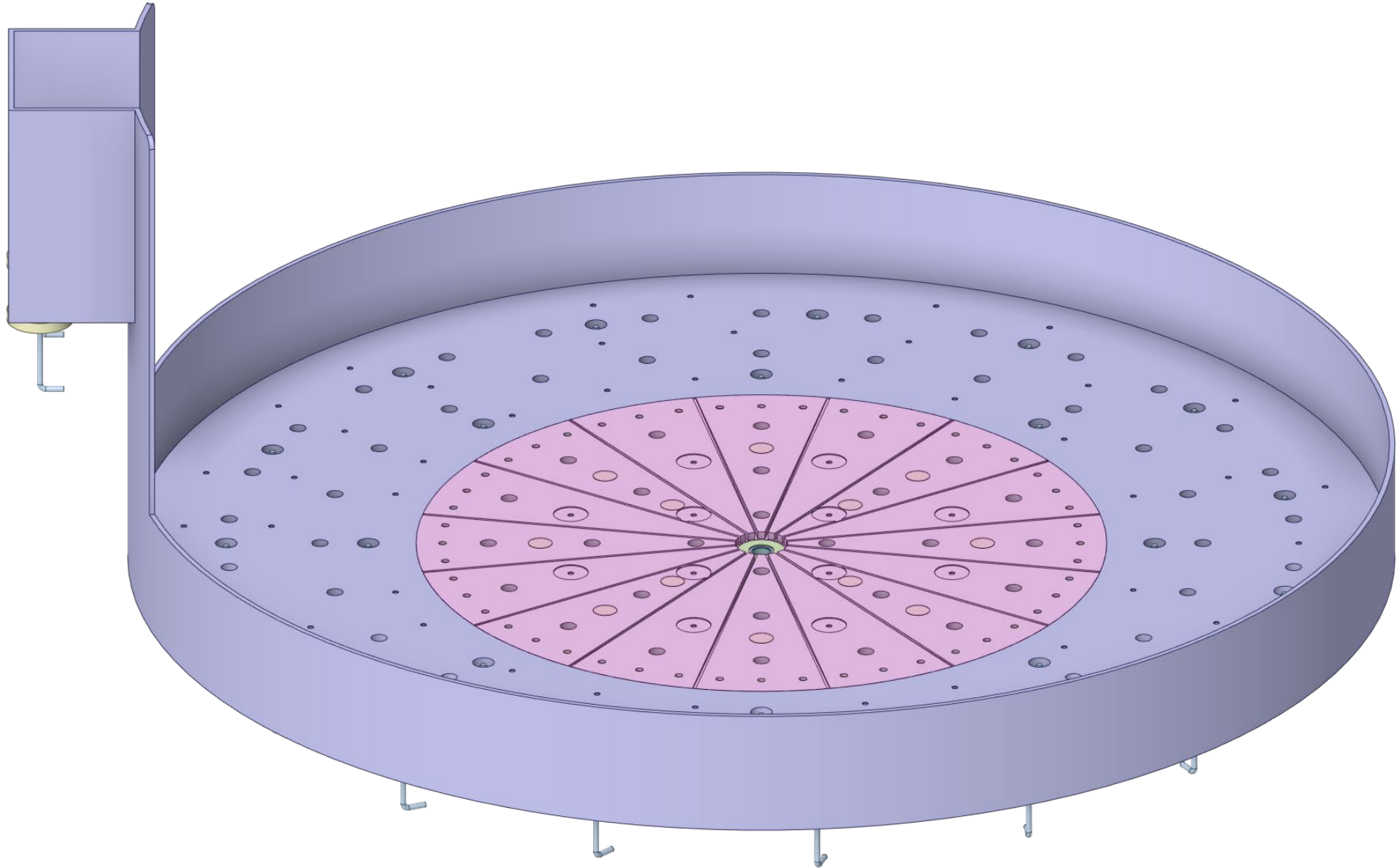
Bulk Shielding Scope



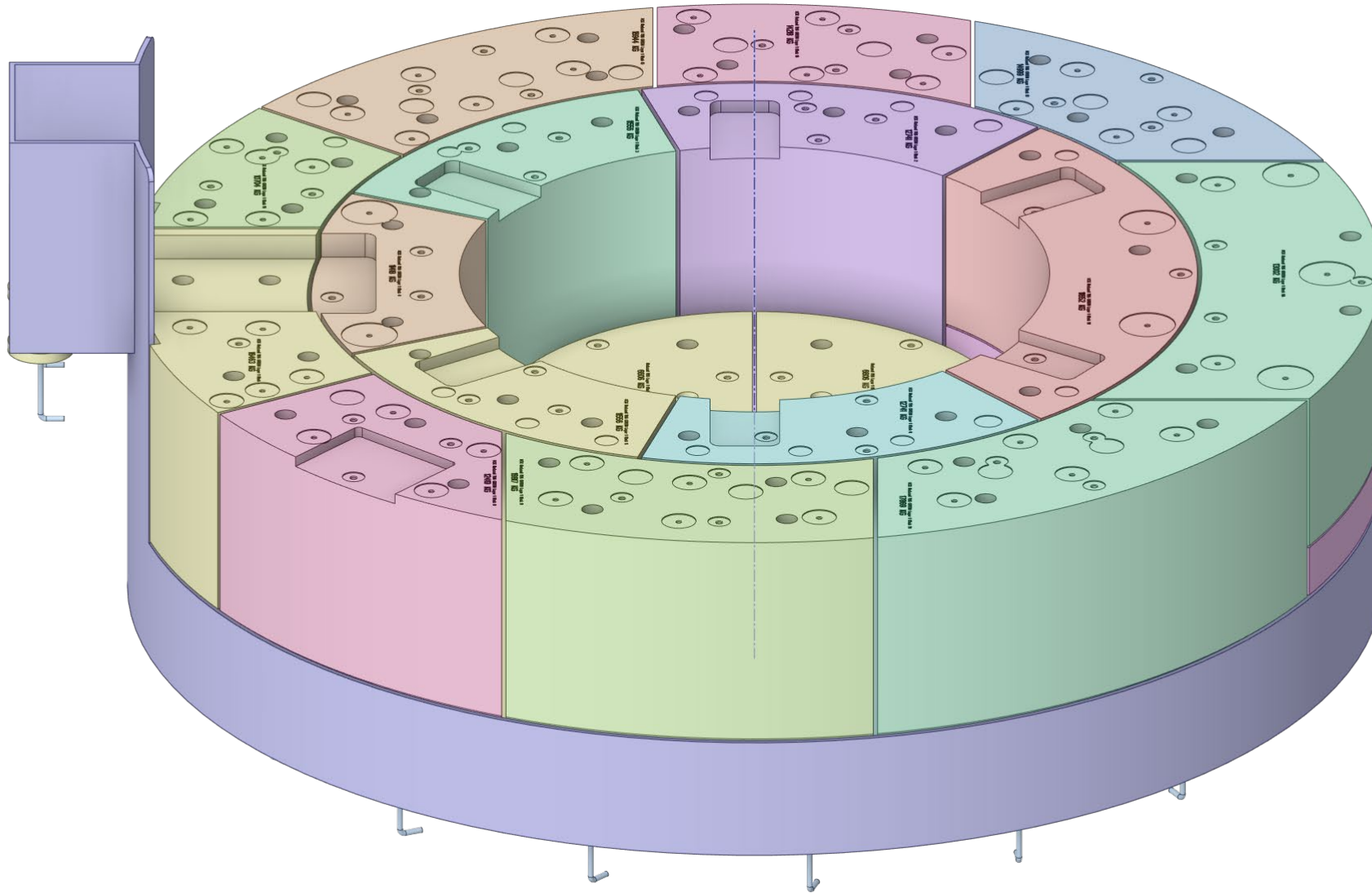
Core Vessel Baseplate



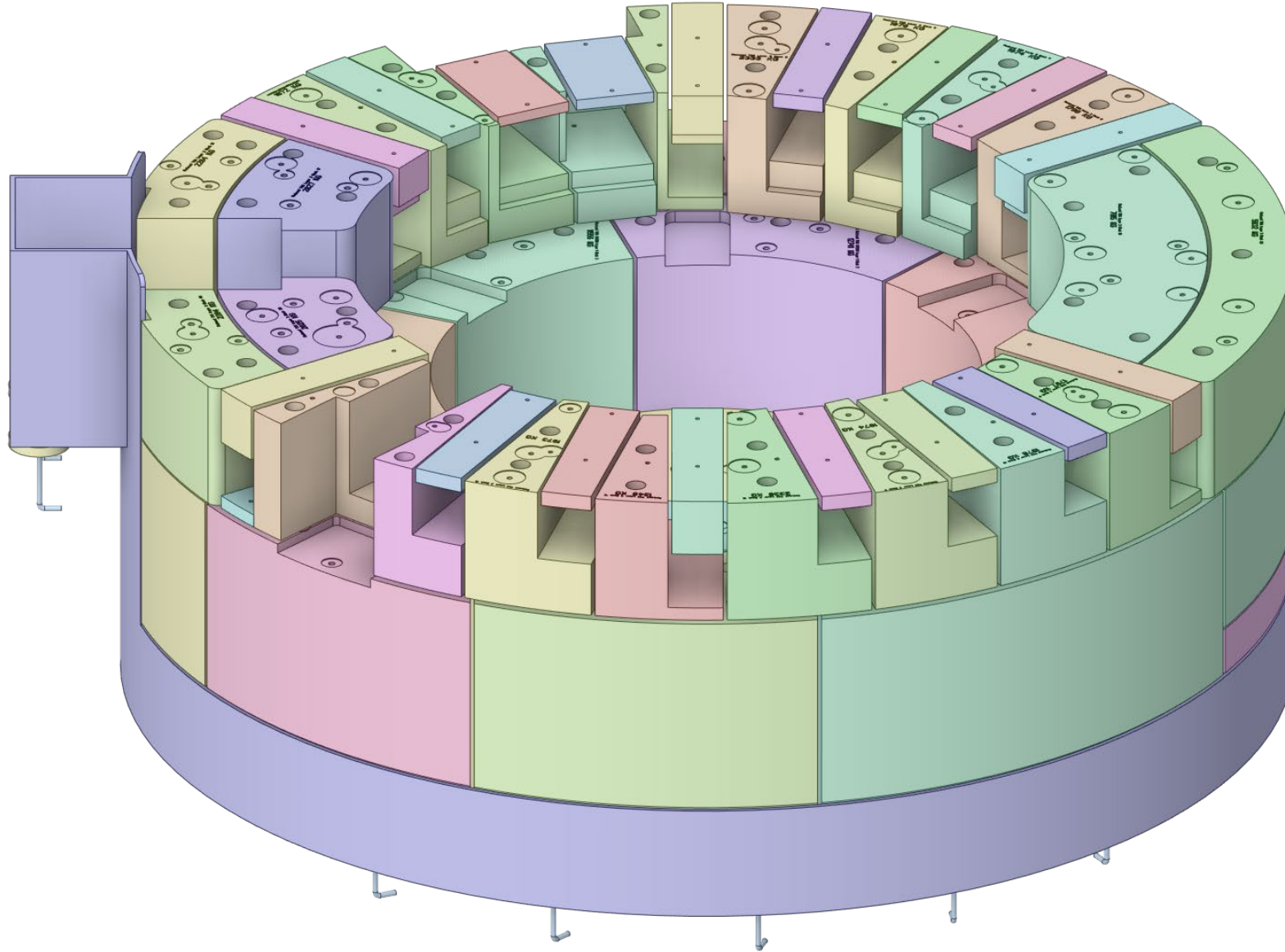
Bulk Shielding Liner



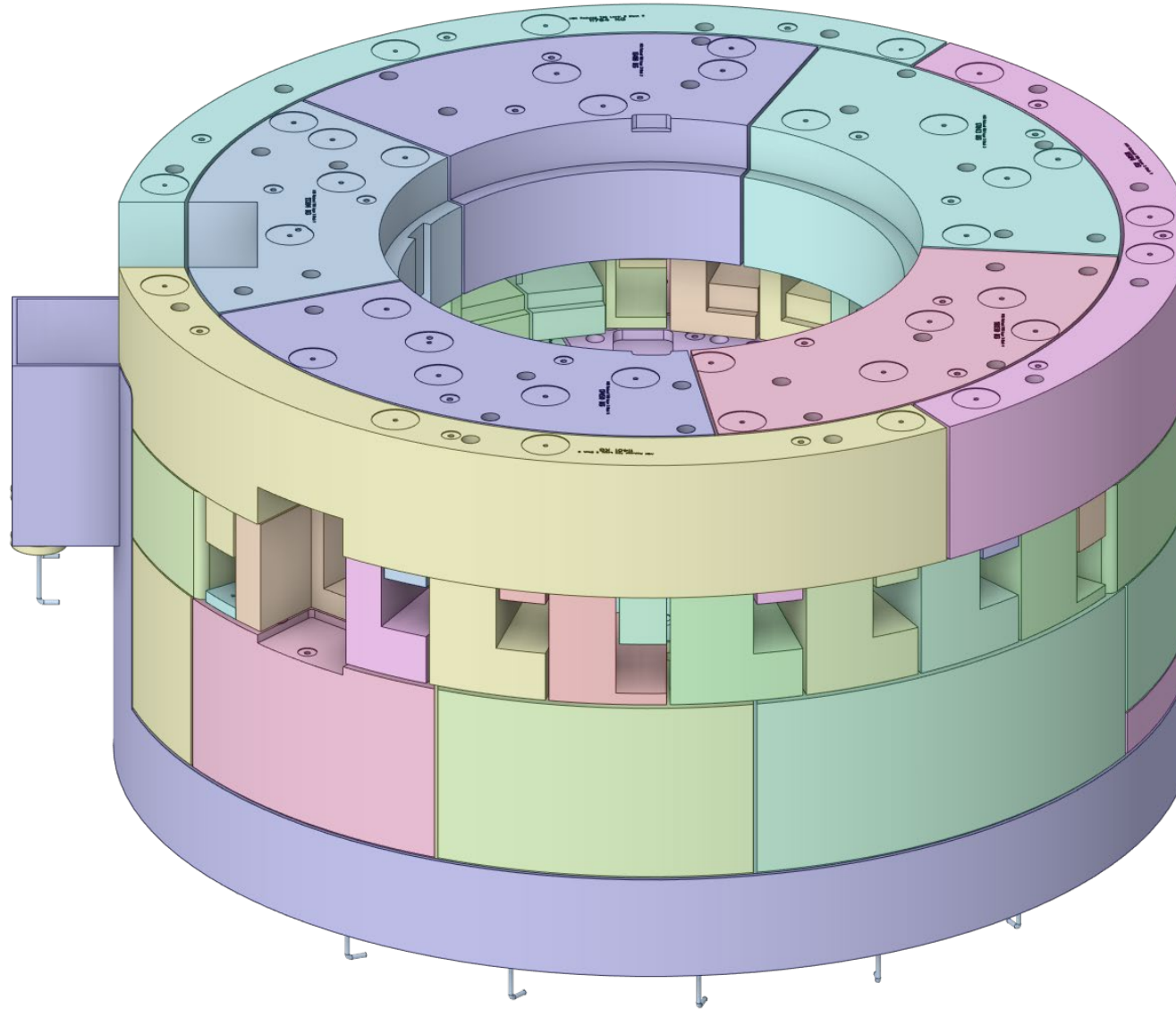
Bulk Shielding Layer 1



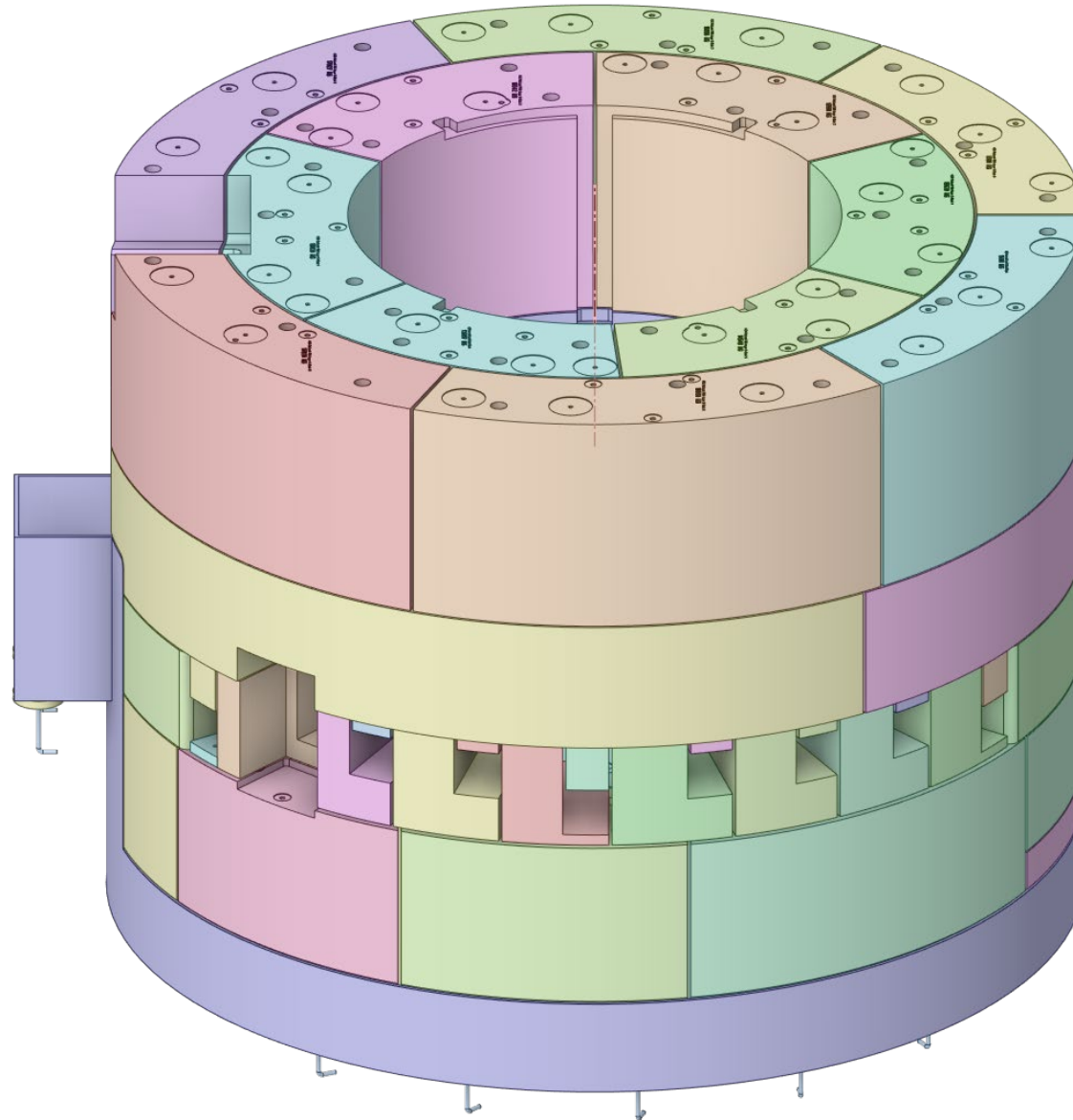
Bulk Shielding Layer 2



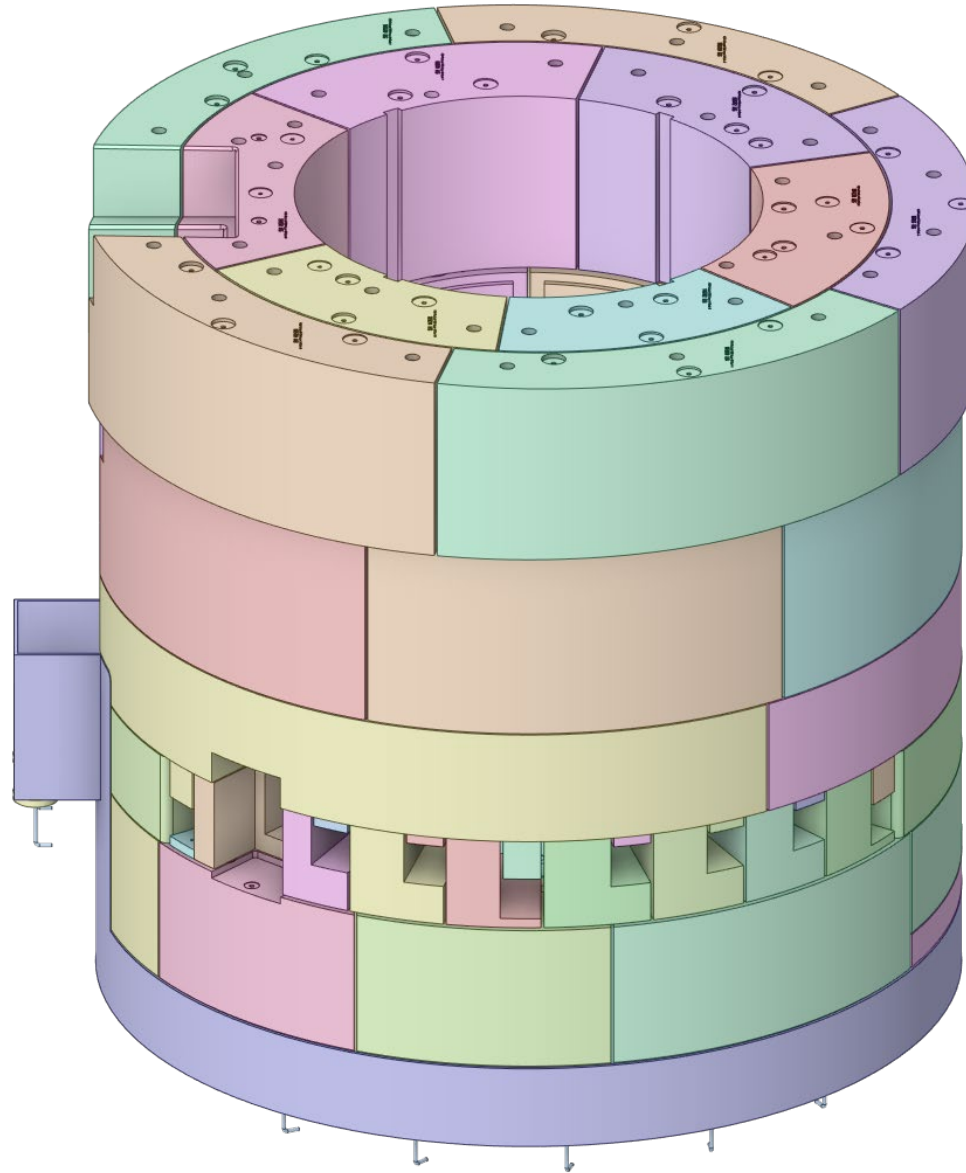
Bulk Shielding Layer 3



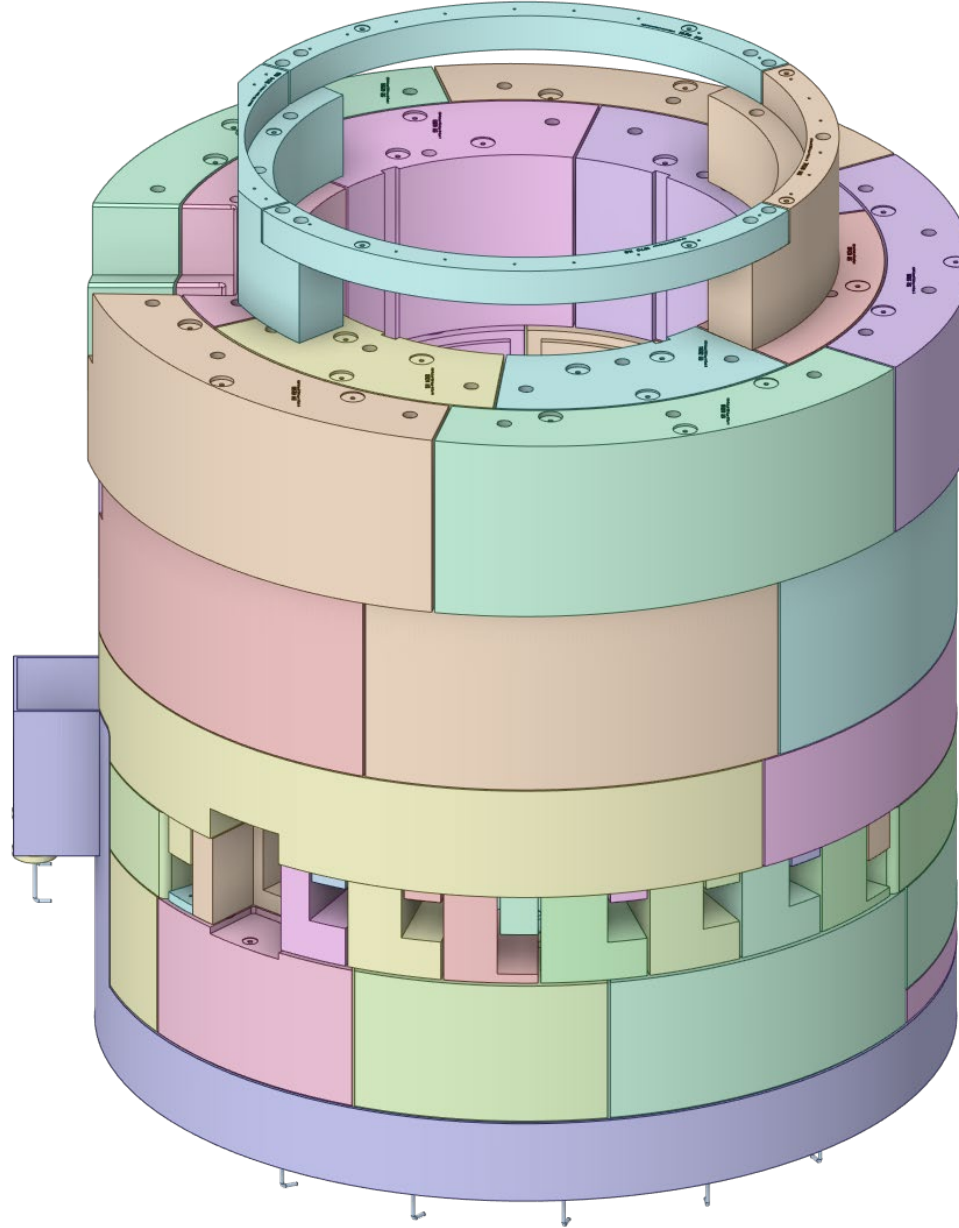
Bulk Shielding Layer 4



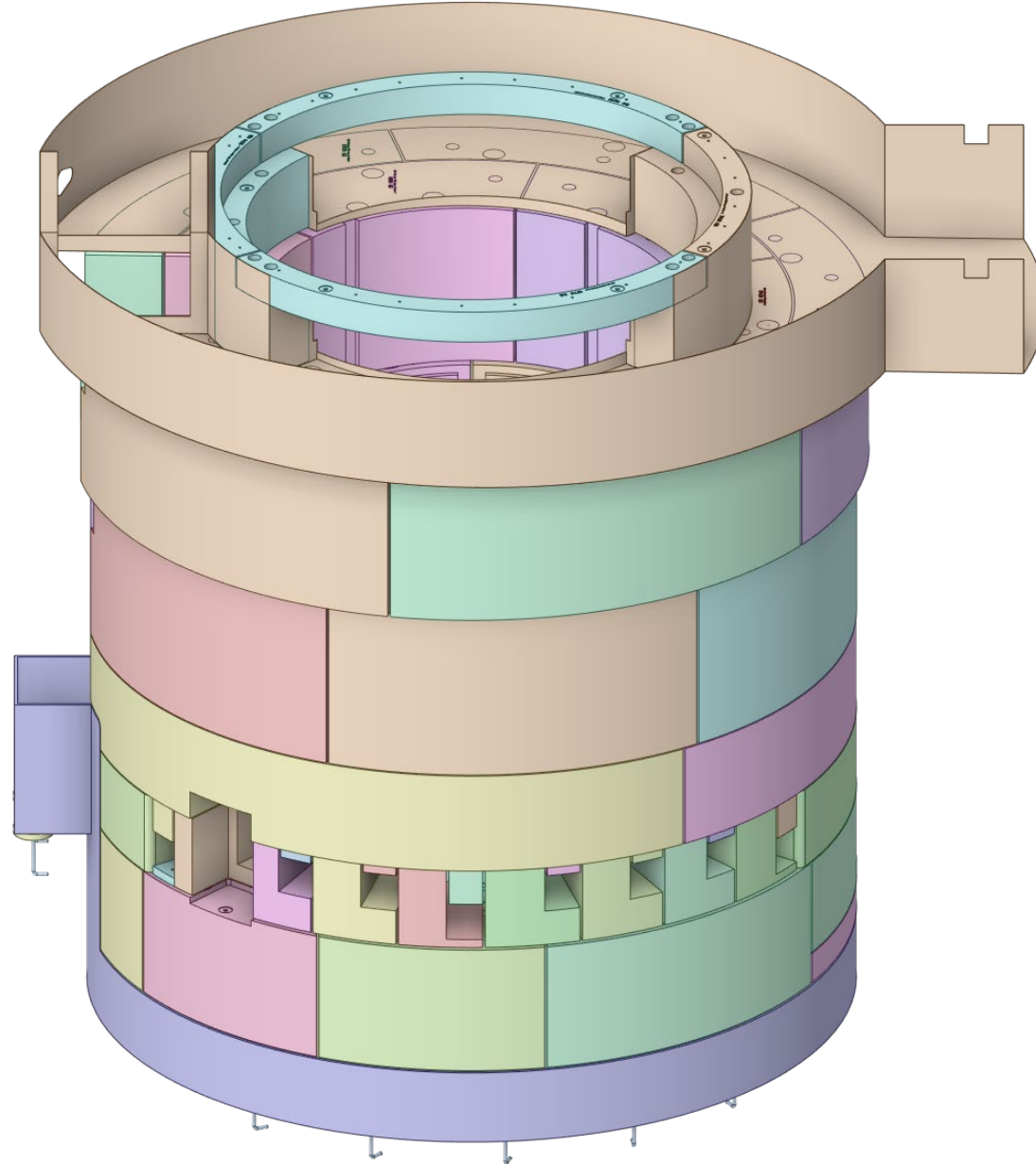
Bulk Shielding Layer 5



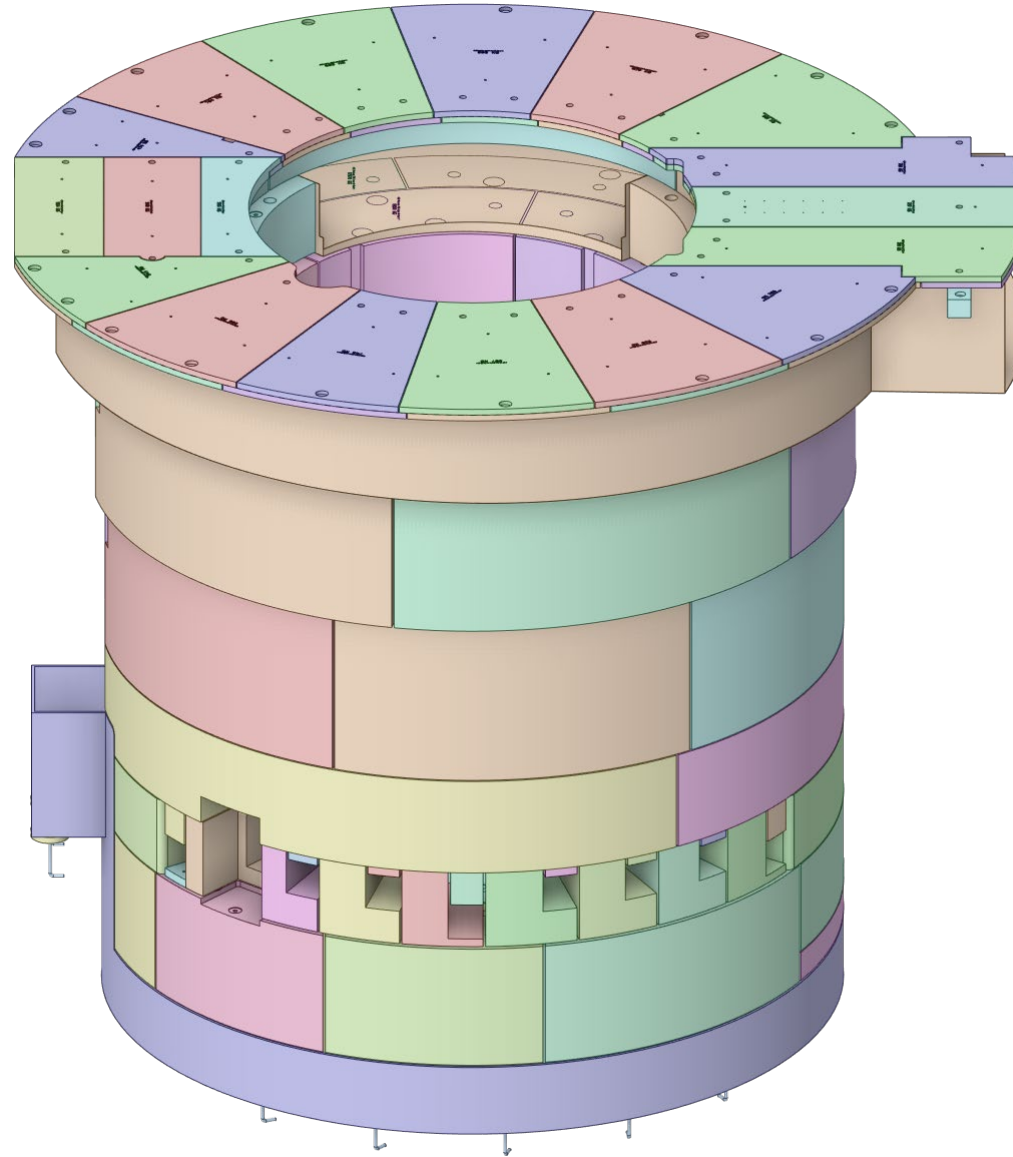
Bulk Shielding Layer 6



Pipe Pans



Pipe Pan Removable Shielding



AIC Removable Shielding

